

SUBMITTAL DATA SHEET

(H,Y)IC4024B21 Non-Ducted 4-Way Cassette Indoor Unit

S Job Name:		Location:	
Purchaser:		Order No.:	
Engineer:			
Submitted To:	For:	Ref:	Approval:
Submitted By:			Construction:
Date:		Model No.:	
Unit Designation:		Schedule No.:	

FEATURES:

- Optional motion and radiant heat sensors for shut-off and activation in response to room occupancy.
- Multiple fan speed settings
- Optional fresh air kit available
- Four air volume settings with Ultra Hi for higher ceilings
- 4-way airflow standard but can be configured for 2-way or 3-way
- Integrated condensate pumps included in all units
- Uniform panel sizing
- Optional lift mechanism allows panel to be lowered for convenient service access

ACCESSORIES:

- Panel for 4 way cassette, standard, P-AP160NA2
- Panel for 4 way cassette, with motion and radiant sensors, P-AP160NAE1
- Duct Adapter, PD-75A
- Fresh Air Inlet Kit, OACI-160K3
- Filter Box, B-160H3
- T-Tube Connecting Kit, TKCI-160K
- Air Outlet Shutter Plate, PI-160LS2

NOTES:

1. Nominal capacity is based on combinations within the VRF system and the following conditions:
 Cooling Operation Conditions
 Indoor Air Inlet Temperature: 80F DB (26.7 °C DB)
 67F WB (19.4 °C WB)
 Outdoor Air Inlet Temperature: 95F DB (35.0 °C DB)

 Heating Operation Conditions
 Indoor Air Inlet Temperature: 70F DB (21.1 °C DB)
 47F WB (8.3 °C WB)
 Outdoor Air Inlet Temperature: 43F DB (6.1 °C DB)
 Piping Length: 24.6 ft (7.5 m)
 Piping Lift: 0 ft (0 m)
2. Sound Pressure level is based on conditions:
 4.9 ft (1.5m) beneath the unit.

Indoor Unit Type		4-Way Cassette
Model		(H,Y)IC4024B21S
Indoor Unit Power Supply	--	AC 1Phase, 208/230V 60Hz
Nominal Cooling Capacity*1	Btu/h (kW)	24,000 (7.0)
Nominal Heating Capacity*1	Btu/h (kW)	27,000 (7.9)
Sound Pressure Level*2 (Overall A Scale)	dB	42-36-32-28
Outer Dimensions		
Height	in.(mm)	11-23/32 (298)
Width	in.(mm)	33-1/16 (840)
Depth	in.(mm)	33-1/16 (840)
Net Weight	lbs(kg)	57 (26)
Refrigerant	--	R410A
Indoor Fan	--	Multi-Blade Centrifugal Fan
Number/Unit	--	1
Outer Diameter	φ in (mm)	19-9/32 (490)
Nominal Air Flow (Hi2-Hi-Me-Lo)	cfm (m³/min)	953-812-635-494 (27-23-18-14)
Indoor Fan Motor	--	Drip-Proof Type Enclosure
Starting Method	--	DC Motor
Nominal Output	W	57
Electrical Data		
Min Circuit Amps	A	0.9
Maximum Fuse Size	A	15
Connections	--	Flare-nut Connection (with Flare Nuts)
Refrigerant Piping		
Liquid Line	in.(mm)	3/8 (9.52)
Gas Line	in.(mm)	5/8 (15.88)
Condensate Drain	--	VP25
OD	in.(mm)	1-1/4 (32)
ID	in.(mm)	31/32 (25)

Adaptable Panel Model		P-AP160NA2 (without Motion and Radiation Sensors)	P-AP160NAE1 (with Motion and Radiation Sensors)
Color	--	Neutral White	
Outer Dimensions			
Height	in.(mm)	1-9/16 (40)	1-9/16 (40)
Width	in.(mm)	37-13/32 (950)	37-13/32 (950)
Depth	in.(mm)	37-13/32 (950)	37-13/32 (950)
Net Weight	lbs(kg)	14 (6.5)	14 (6.5)

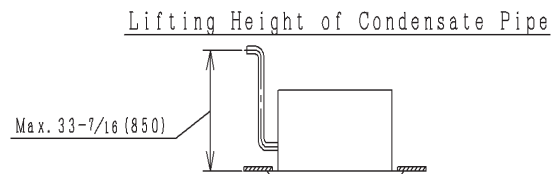
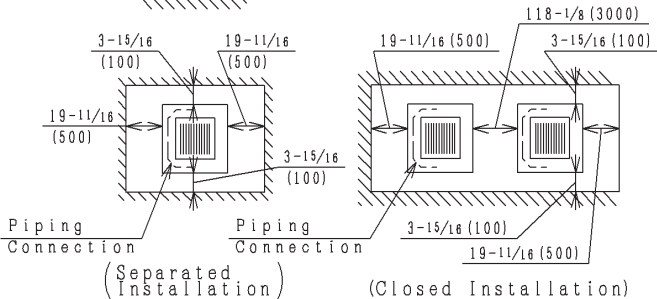
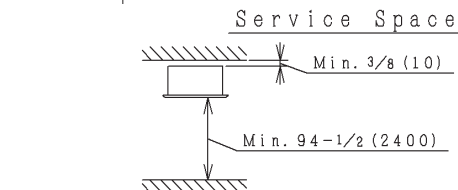
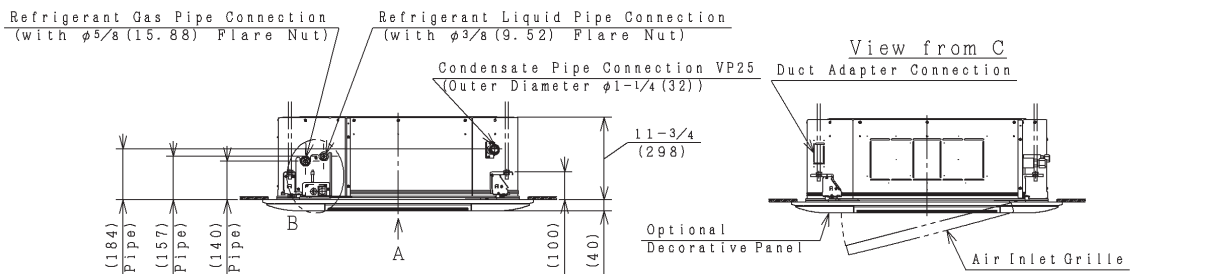
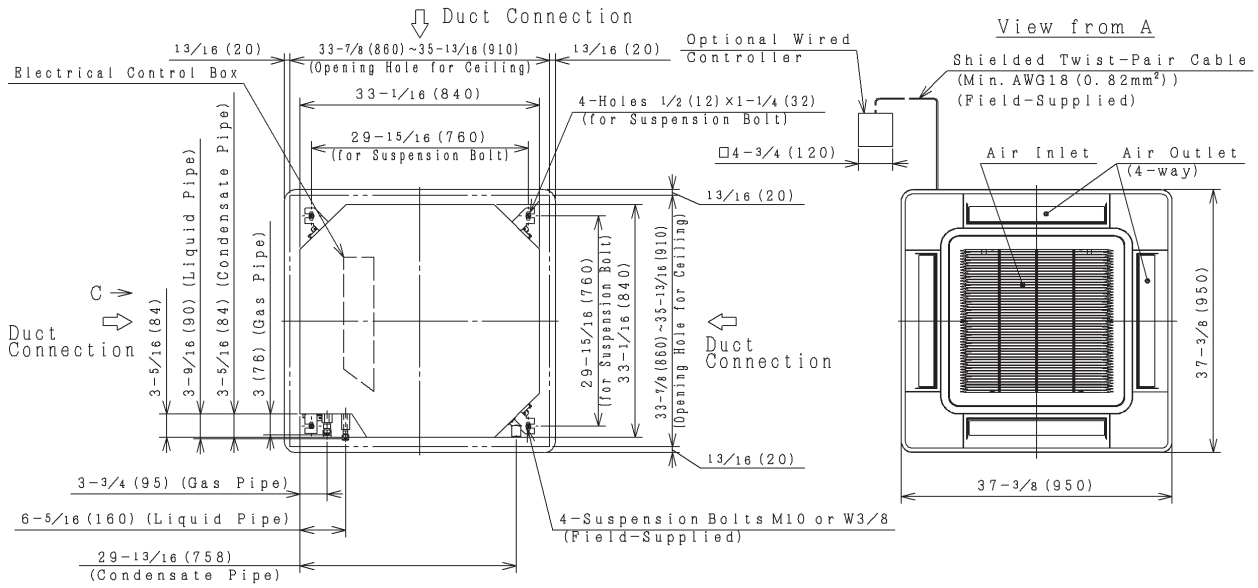
Specifications subject to change

VERSION 201905

System Dimensions

Model: (H,Y)IC4024B21S with Decorative Panel P-AP160NAE1

Unit: inch (mm)



NOTES:

1. Distance between the wall and decorative edge must be a minimum of 59-1/16 inch (1500mm) to prevent short circuiting.
2. In case the position of the corner panel with motion and radiation sensors is changed from the initial position, then the setting on the wired controller must be changed.

