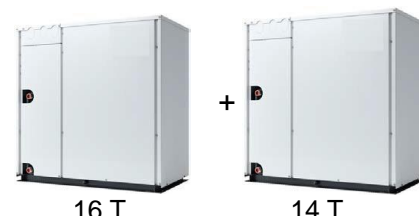


## Submittal Data Sheet

(H, Y) VWH (P, R) 360B\_2S Multi-module Water Source Unit  
30 Ton, Heat Pump and Heat Recovery, 208-230V, 60Hz, 3Ph and 460V, 60Hz, 3Ph

Job Name:	Location:
Purchaser:	Order No:
Engineer:	
Submitted By:	Date:
Unit Designation:	Schedule No:
Construction:	Model No:



### Features and Benefits

- Compact, modular and light weight equipment installed entirely inside the building – enhances design flexibility and makes it easier to adapt to different building types
- Wide capacity range with all Inverter Compressors delivering maximum efficiency at part load conditions, providing comfortable individual zone control
- Outstanding VRF solution for cold climate applications – operation and capacity not affected by outside temperature, no defrost operation required
- Flexible solution with 1-, 4-, 8-, and 12-port change-over boxes for heat recovery applications
- Energy efficient and personal comfort solution via simultaneous cooling and heating capability, for heat recovery
- Refrigerant cooled Inverters for reliable and efficient operation
- Developed for easy installation and service – field selectable top or front refrigerant connections and easy accessible controls

### Technical Data

(H,Y)VWHP360B_2S Heat Pump (H,Y)VWHR360B_2S Heat Recovery		
Unit Performance		
Product Number	(H,Y)VWH(P,R)360B32S	(H,Y)VWH(P,R)360B42S
Unit Combination	(H,Y)VWH(P,R)192B32S	(H,Y)VWH(P,R)192B42S
	(H,Y)VWH(P,R)168B32S	(H,Y)VWH(P,R)168B42S
Power Supply (V,Hz,Ph)	208 / 230, 60, 3	460, 60, 3
Nominal Capacity, Cooling (Btu/h)	360,000	
Nominal Capacity, Heating (Btu/h)	405,000	
IEER, Non-Ducted (Btu/Wh)	19.7	
COP68, Non-Ducted (W/W)	4.50	
Unit Details		
MCA (A), 208V / 230V, 460V	(55 and 41) / (50 and 37)	29 and 22
MOP (A), 208V / 230V, 460V	(70 and 50) / (60 and 50)	40 and 25
Total Dimensions H x W x D (")	39-3/8 x 82-11/16 x 21-5/8	
Net Weight (lbs)	558 and 558	567 and 567
Refrig. Piping, Gas/HL(for HR)/Liquid (")	1-5/8/ (1-3/8) / 3/4	
Water Piping, Inlet and Outlet (")	1-1/4	
Sound Pressure (dBA)	61.5	
Refrigerant Type	R410A	
R410A Refrigerant Charge (lbs)	15.4 and 15.4	
Water Inlet Temp Range (°F)	50 to 113	
Water Flow, Rated / Range (GPM)	51 and 44.1 / (27 to 79) and (24 to 70)	
Max. / Recommended No. of IUs	62 / 26	
Connection Ratio Range (%)	50 to 130	
System Details		
Max. Total Piping Length (ft)		984
Max. Vert. Distance, WS to IU (ft)	WU above IU	164
	WU below IU	131
Max. Vertical Distance, IU to IU (ft)		49

*Performance ratings are based on AHRI 1230 test standard*

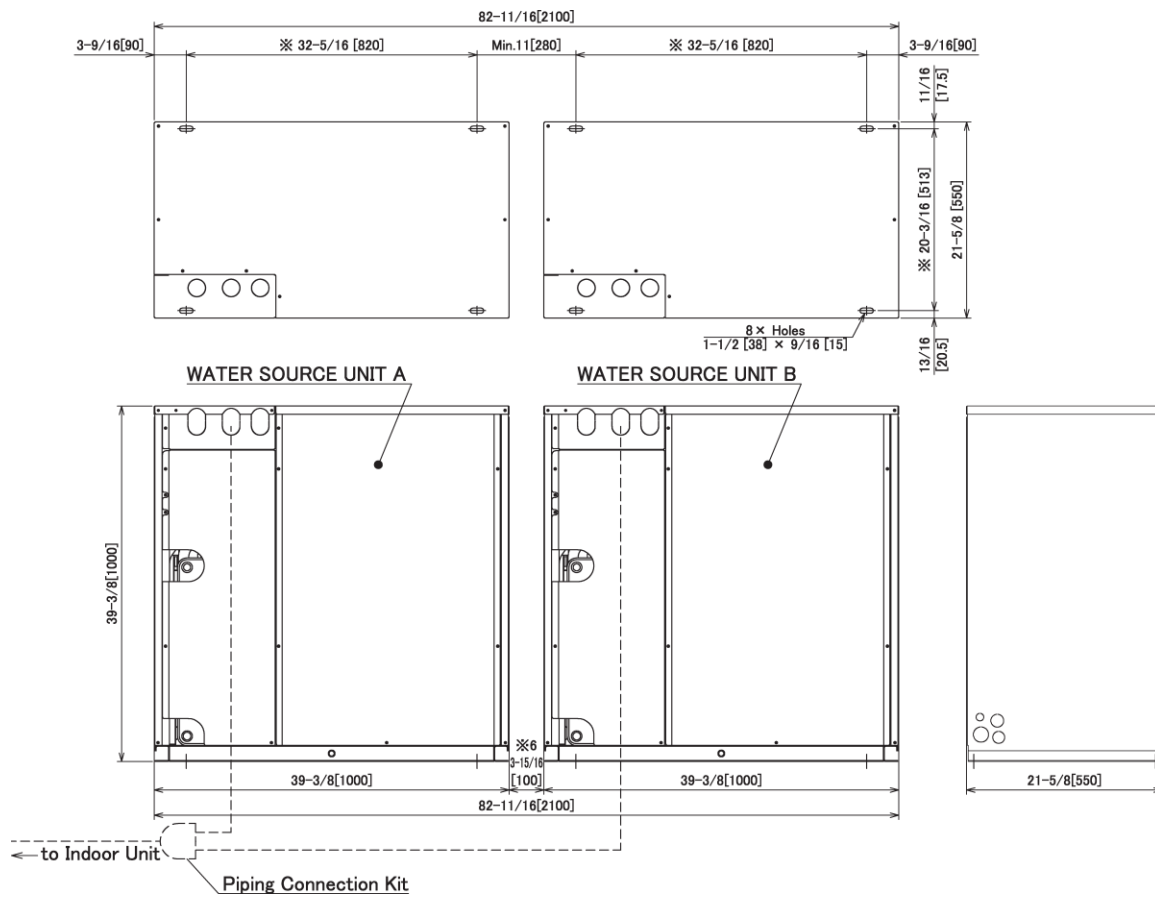
*For additional product information, refer to the Engineering Manual*

Version 201907

## Dimensions

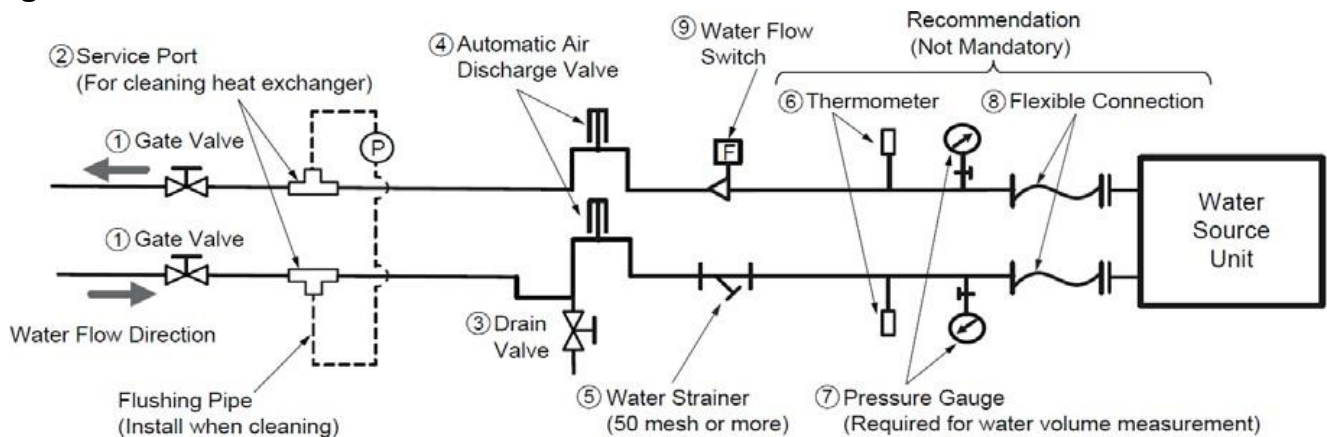
(H,Y)VWH(P,R)360B(3,4)2S

inch (mm)



For additional product information, refer to the Engineering Manual

## Piping Connections



Items ① through ⑨ are field supplied.

Version 201907

