

SUBMITTAL DATA SHEET

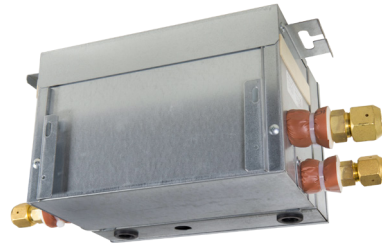
4.0 RT COBS048B21S

Changeover Box

Job Name:		Location:	
Purchaser:		Order No.:	
Engineer:			
Submitted To:	For:	Ref:	Approval:
			Construction:
Submitted By:		Date:	
Unit Designation:		Schedule No.:	Model No.:

FEATURES:

- Used with heat recovery systems only
- No heat exchange occurs
- Will continue to operate even if a malfunction occurs in 1 indoor unit on the same circuit



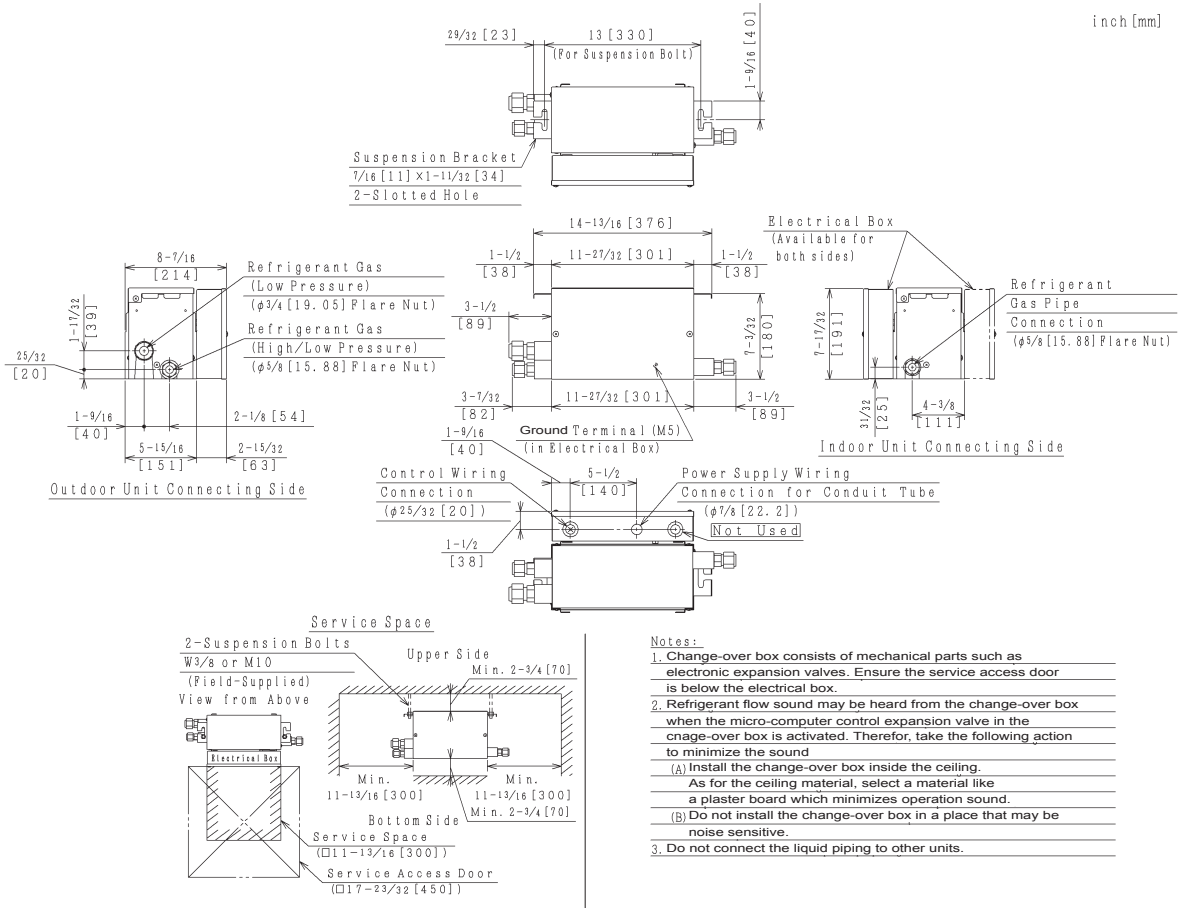
Model Name				COBS048B21S	
Power Supply				208/230V 1PH 60Hz	
Power Consumption			W	20	
Connectable Indoor Unit Total Capacity	more than 2 Units	kBtu/h		≤41	
	1 Unit	kBtu/h		≤48	
Number of Connectable indoor Unit				1-7	
Dimension	Height	in	(mm)	7-17/32	191
	Width	in	(mm)	11-27/32	301
	Depth	in	(mm)	8-7/16	214
Net Weight		lb	(kg)	15	7
Refrigerant				R410A	
Min Circuit Amps				A	0.1
Recommended Fuse/Breaker Size				A	15
Maximum Fuse Size				A	15
Refrigerant Piping (from Outdoor Unit)	Gas Line (Low Pressure)	in	(ϕ mm)	3/4	19.05
	Gas Line (High Pressure)	in	(ϕ mm)	5/8	15.88
	Liquid Line	in	(ϕ mm)	-	
Refrigerant Piping (from Indoor Unit)	Gas Line	in	(ϕ mm)	5/8	15.88
	Liquid Line	in	(ϕ mm)	-	

System Dimensions

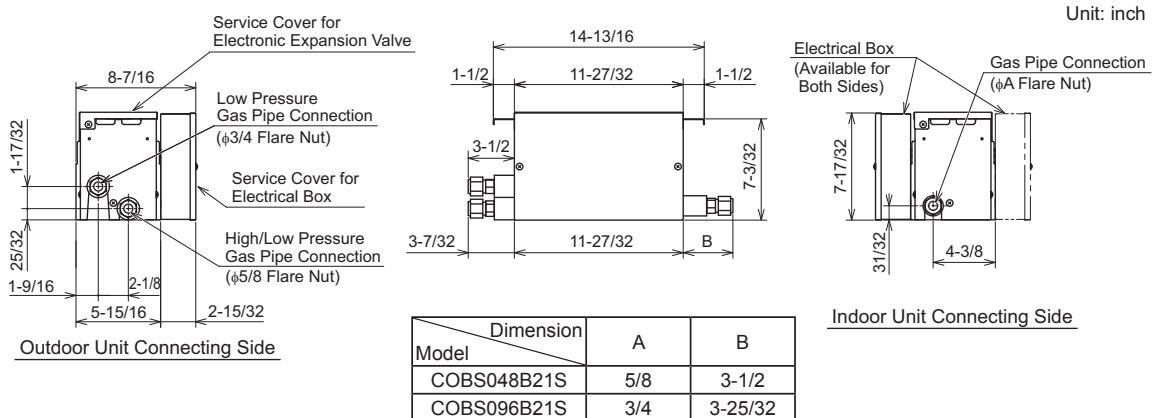
Changeover Box

Model: COBS048B21S

< COBS048B21S >



Piping Connection Dimensions



version 201704