

# Submittal Data Sheet

(H,Y)DOA096B21S

96,000 Btu/h DOAS (Dedicated Outdoor Air System)

|                   |              |               |
|-------------------|--------------|---------------|
| Job Name:         | Location:    |               |
| Purchaser:        | Order No:    |               |
| Engineer:         |              |               |
| Submitted To:     | Approval:    | Construction: |
| Submitted By:     | Date:        |               |
| Unit Designation: | Schedule No: | Model No:     |

## FEATURES

- Fully integrated to the VRF System
- Wide operation temperature range
- Drain Pump Pre-installed
- Nominal Airflow 1,236CFM
- High external static pressure up to 1.24WG (at 230V)
- IR Receiver Kit CWDIRK01

|  |                           |                     |
|--|---------------------------|---------------------|
| Indoor Unit Type                                     | DOAS                      |                     |
| Model  | (H,Y)DOA096B21S           |                     |
| Indoor Unit Power Supply                             | AC 1Phase, 208/230V, 60Hz |                     |
| Outlet Air Temperature Control *1                    |                           |                     |
| Nominal Cooling Capacity                             | Btu/h (kW)                | 96,000 (28.2)       |
| Nominal Heating Capacity                             | Btu/h (kW)                | 60,000 (17.6)       |
| Indoor Temperature Control *2                        |                           |                     |
| Nominal Cooling Capacity                             | Btu/h (kW)                | 96,000 (28.2)       |
| Nominal Heating Capacity                             | Btu/h (kW)                | 83,600 (24.5)       |
| Sound Pressure Level *3 (Overall A Scale) (208/230V) | dB                        | 50/51               |
| Outer Dimensions                                     |                           |                     |
| Height   | in.(mm)                   | 19-1/8 (486)        |
| Width  | in.(mm)                   | 50 (1270)           |
| Depth  | in.(mm)                   | 44-1/8 (1120)       |
| Net Weight   | lbs(kg)                   | 247 (112)           |
| Refrigerant  | R410A                     |                     |
| Indoor Fan   |                           |                     |
| Air Flow Rate  | cfm (m <sup>3</sup> /min) | 1236 (35.0)         |
| External Pressure (208/230V)                         |                           |                     |
| High Pressure  | in.W.G(Pa)                | 1.06/1.24 (265/310) |
| Standard   | in.W.G(Pa)                | -                   |
| Motor Nominal Output                                 | W                         | 402 (201 x 2pcs)    |
| Min Circuit Amps                                     | A                         | 4.3                 |
| Maximum Fuse Amps                                    | A                         | 15                  |
| Connections  |                           |                     |
| Refrigerant Piping                                   | Brazed                    |                     |
| Liquid Line  | in.(mm)                   | 3/8 (9.52)          |
| Gas Line   | in.(mm)                   | 7/8 (22.20)         |
| Condensate Drain                                     | VP25                      |                     |
| OD   | in.(mm)                   | 1-1/4 (32)          |
| ID   | in.(mm)                   | 1 (25)              |

### NOTES:

#### \*1. Outlet Air Temperature Control

A control system to bring the outlet temperature closer to the set point temperature of the wired controller, using an outlet air thermistor of the unit.

Nominal capacity (outlet air temperature control) is based on combination with VRF system and following conditions:

#### Cooling Operation Conditions

Outdoor Temperature: 91°F DB (33.0°C DB)  
82°F WB (28.0°C WB)

Discharge Set Temperature: 61°F DB (16.0°C DB)

Piping Length: 24.6 ft. (7.5m) Piping Lift: 0 ft. (0m)

#### Heating Operation Conditions

Outdoor Temperature: 32°F DB (0°C DB)  
27°F WB (-2.9°C WB)

Discharge Set Temperature: 72°F DB (22.0°C DB)

#### \*2. Indoor Temperature Control

A control system to bring the room atmosphere temperature closer to the set point temperature of the wired controller, using a temperature sensor (remote sensor or thermistor in wired controller) mounted to any place in the room.

Nominal capacity (indoor temperature control) is based on combination with VRF system and following conditions:

#### Cooling Operation Conditions

Outdoor Temperature: 91°F DB (33.0°C DB)  
82°F WB (28.0°C WB)

Indoor Temperature: 81°F DB (27.0°C DB)

Piping Length: 24.6 ft. (7.5m) Piping Lift: 0 ft. (0m)

#### Heating Operation Conditions

Outdoor Temperature: 32°F DB (0°C DB)  
27°F WB (-2.9°C WB)

Indoor Temperature: 68°F DB (20.0°C DB)

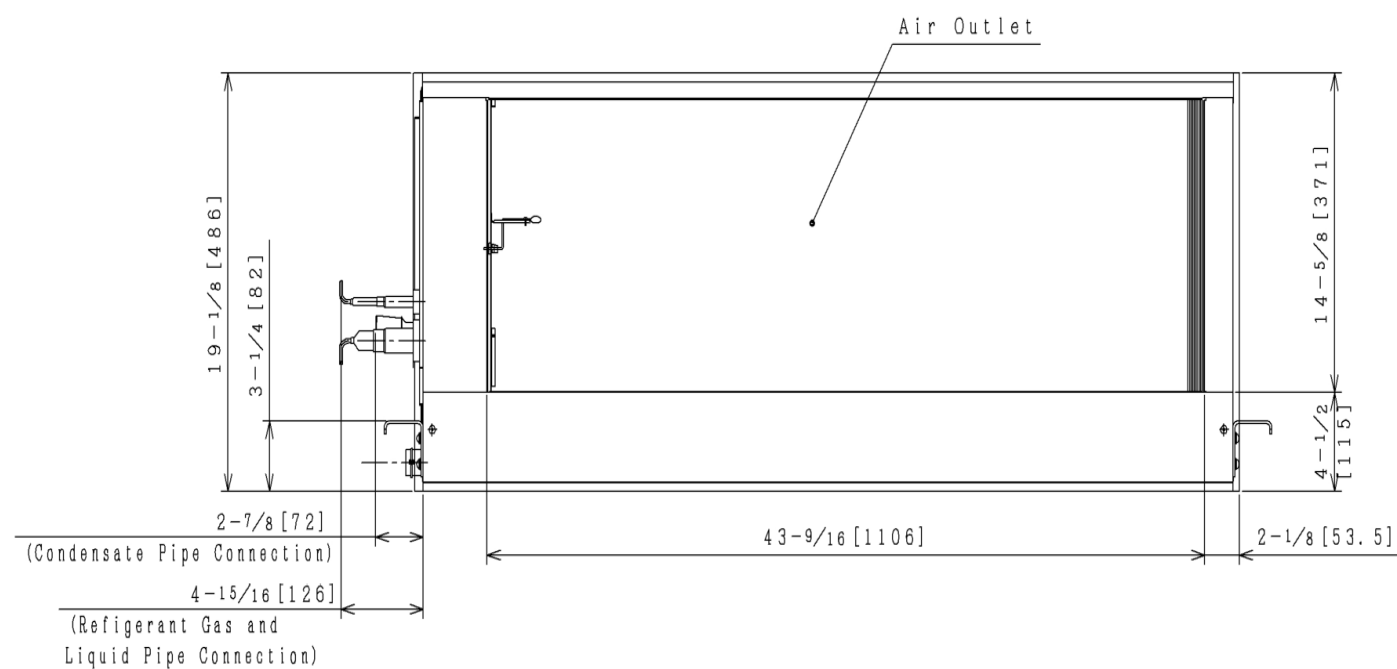
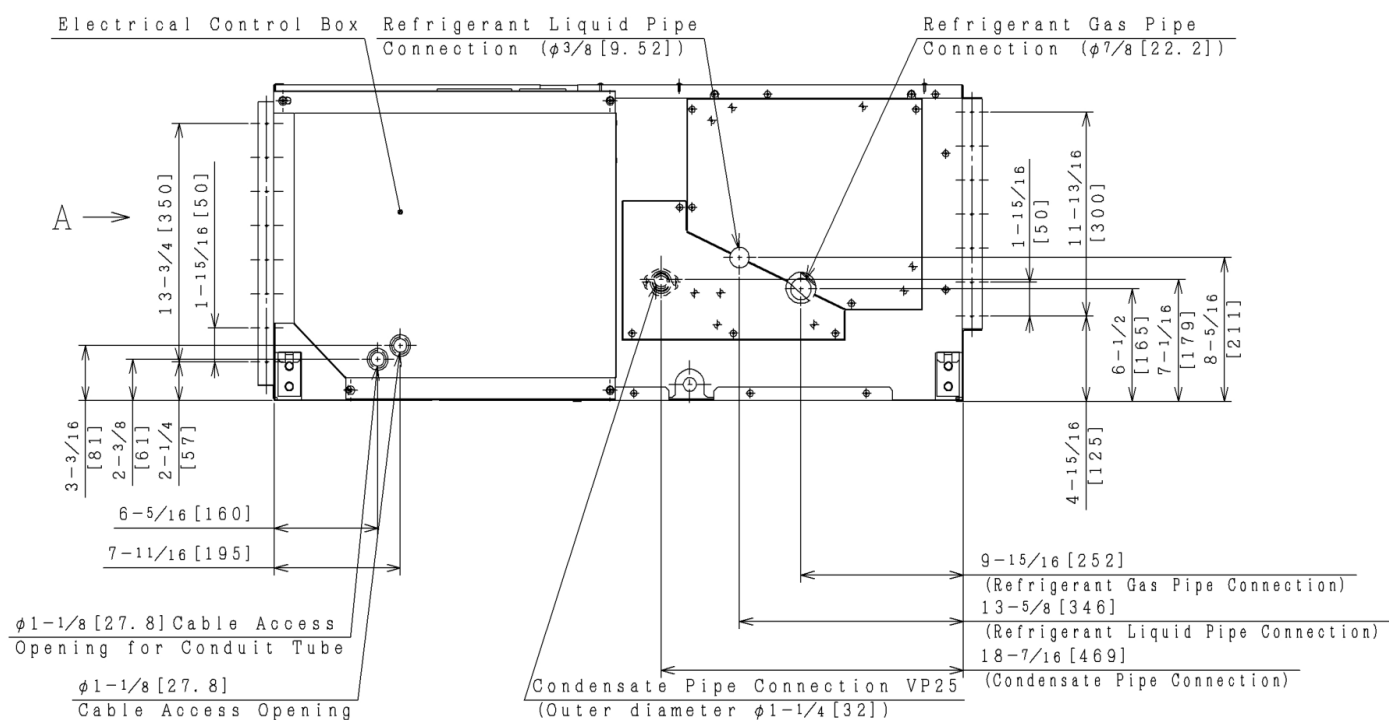
#### \*3. The sound pressure level is based on the following conditions.

4.9 ft. (1.5m) beneath the units.

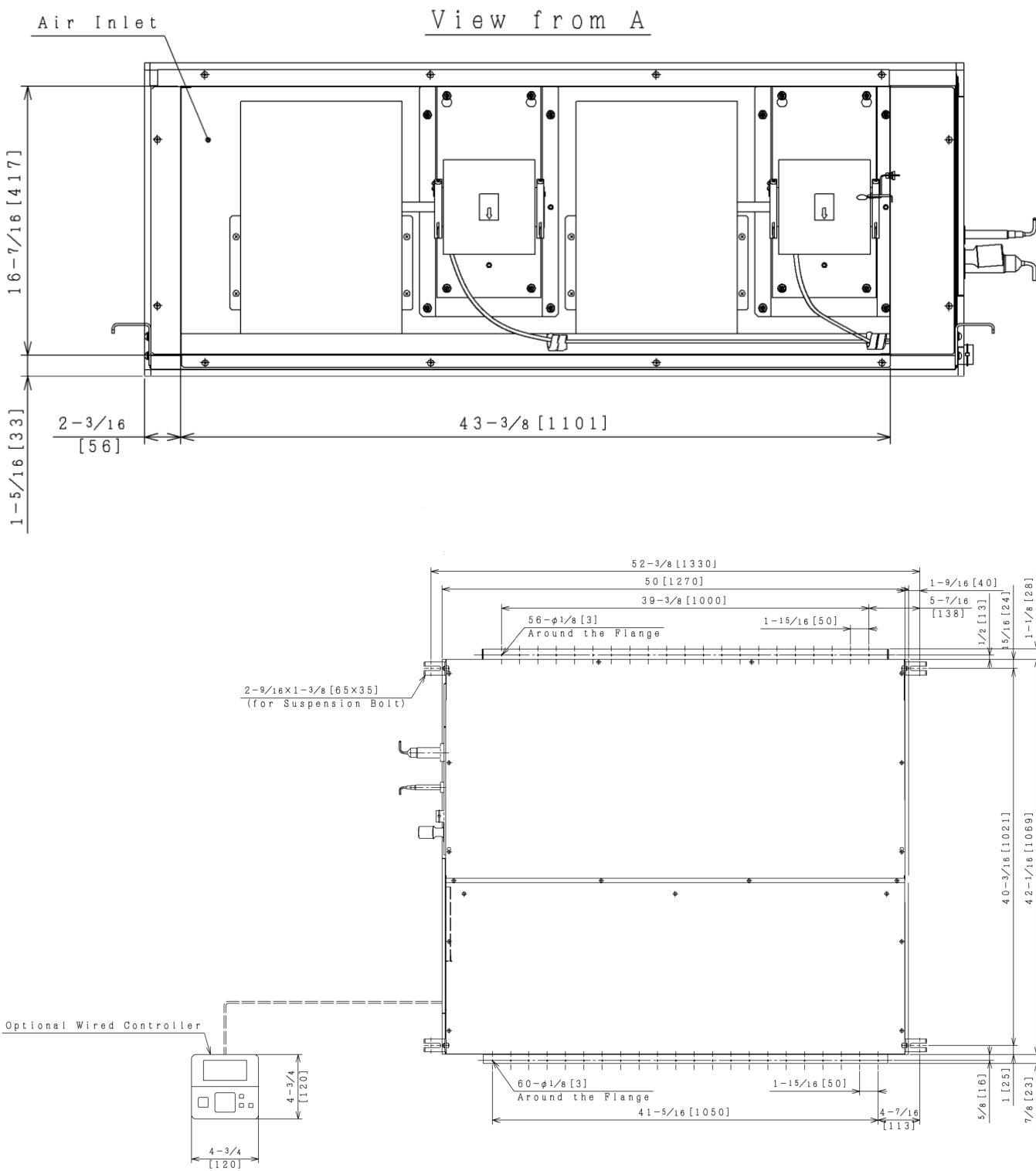
The above data is measured in an anechoic chamber so that reflected sound should be taken into consideration in the field.

96,000 BTU DOAS (Dedicated Outside Air System)  
Model: (H,Y)DOA096B21S

## Dimensional Drawings



96,000 BTU DOAS (Dedicated Outside Air System)  
 Model: (Y, H) DOA096B21S



# **Filter Rack Assembly Drawing of Ducted (High Static) Indoor Unit Type Models: (H,Y) IDH072B21S and (H,Y) IDH096B21S**

