

Submittal Data Sheet

(H,Y)IDH096B21S

**96,000 Btu/h Ducted High Static Indoor Unit
Ducted High Static Indoor Unit**

Job Name:	Location:	
Purchaser:	Order No:	
Engineer:		
Submitted To:	Approval:	Construction:
Submitted By:	Date:	
Unit Designation:	Schedule No:	Model No:

FEATURES

- Multiple fan speed settings
- Up to 1.18 WG static pressure
- Bottom access for easy service and troubleshooting
- Built-in condensate pump

Indoor Unit Type		Duct (High Static Type)
Model		(H,Y)IDH096B21S
Indoor Unit Power Supply		AC 1Phase, 208/230V, 60Hz
Nominal Cooling Capacity *1	Btu/h (kW)	96,000 (28.2)
Nominal Heating Capacity *1	Btu/h (kW)	108,000 (31.7)
Sound Pressure Level *2 (Overall A Scale) (208/230V)	dB	51-46/54-50
Outer Dimensions		
Height	in.(mm)	18-3/8 (466)
Width	in.(mm)	49-3/16 (1250)
Depth	in.(mm)	44-1/8 (1120)
Net Weight	lbs(kg)	258 (117)
Refrigerant		R410A
Indoor Fan		
Air Flow Rate *3 (Hi-Lo)	cfm (m ³ /min)	2542-2189 (72.0-62.0)
External Pressure (208/230V)		
High Pressure	in.W.G(Pa)	0.88/1.18 (220/295)
Standard	in.W.G(Pa)	0.32/0.70 (80/175)
Motor Nominal Output	W	1100
Min Circuit Amps	A	10.6
Maximum Fuse Amps	A	15
Connections		
Refrigerant Piping		Brazed
Liquid Line	in.(mm)	3/8 (9.52)
Gas Line	in.(mm)	7/8 (22.20)
Condensate Drain		VP25
OD	in.(mm)	1-1/4 (32)
ID	in.(mm)	1 (25)

*1. Nominal capacity is based on combination with VRF system and following conditions:

Cooling Operation Conditions

Indoor Air Inlet Temperature: 80 F DB (26.7°C DB), 67F WB (19.4°C WB)

Outdoor Air Inlet Temperature: 95 F DB (35.0°C DB)

Heating Operation Conditions

Indoor Air Inlet Temperature: 70 F DB (21.1°C DB)

Outdoor Air Inlet Temperature: 47 F DB (8.3°C DB), 43F WB (6.1°C WB)

Piping Length: 24.6ft (7.5m) Piping Lift: 0ft (0m)

*2. The sound pressure level is based on the following conditions.

4.9ft. (1.5m) beneath the units.

The above data was measured in an anechoic chamber so that reflected sound should be taken into consideration in the field.

*3. For the (H,Y)IDH series, the fan speeds are only "High" and "Low". Therefore, the fan speed indication of the LCD is changed as High ⇒ Low, by pressing the fan speed key "↑" or "↓".

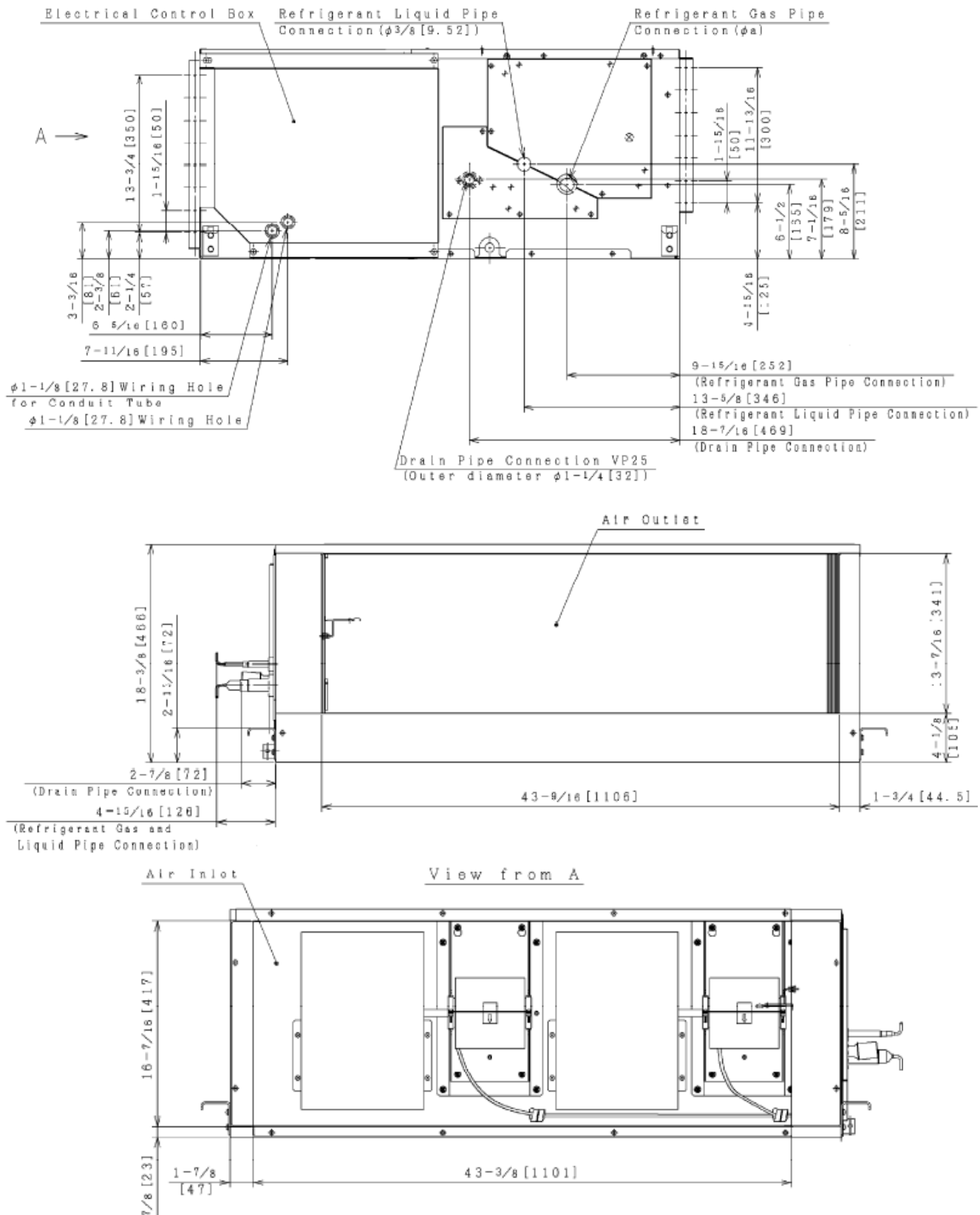
If one wired controller is connected to multiple indoor units (included with 3 or 4 taps speed of the indoor unit), the fan speed indication of LCD is changed as (High 2 →) High → Medium → Low. However, the actual fan speed is as shown in the table below

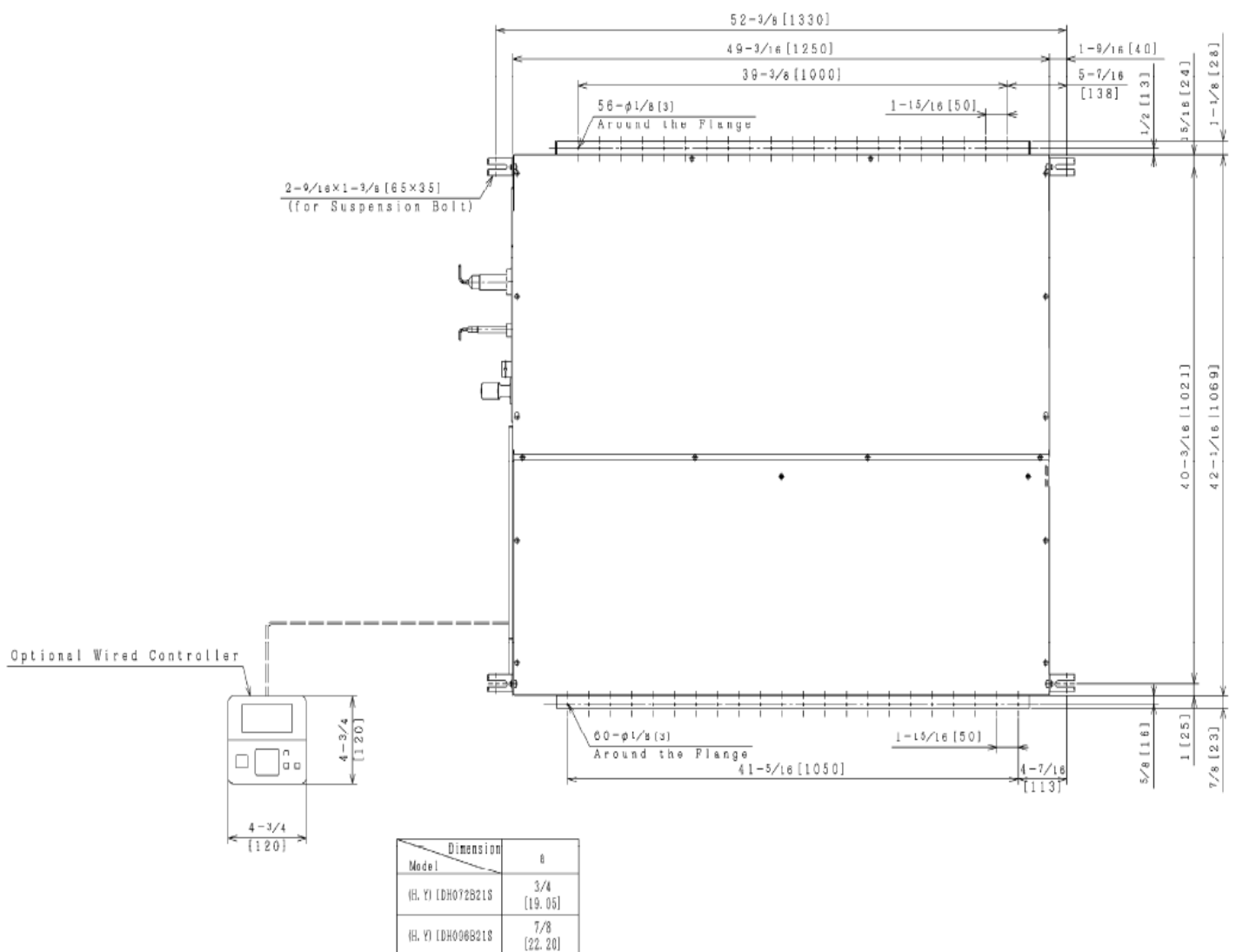
System Dimensions

96,000 BTU Ducted High Static Indoor Unit

Model: (H,Y)IDH096B21S

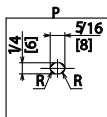
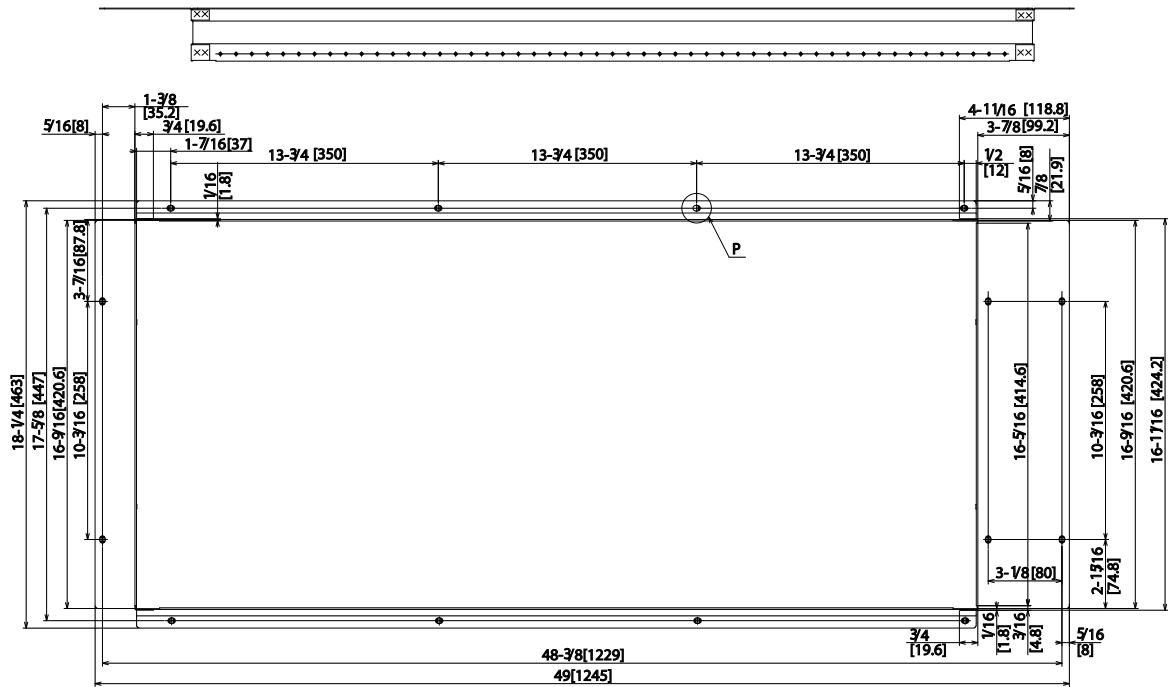
Unit: inch (mm)





Filter Rack Assembly Drawing of Ducted (High Static) Indoor Unit Type **Models: (H,Y) IDH072B21S and (H,Y) IDH096B21S**

Note: The following measurements for the return-air filter box (field supplied) are for information only.



415003-1

