



TEMPMASTER® ROOFTOP UNITS



TempMaster® Omni™ Premier
25-80 Tons

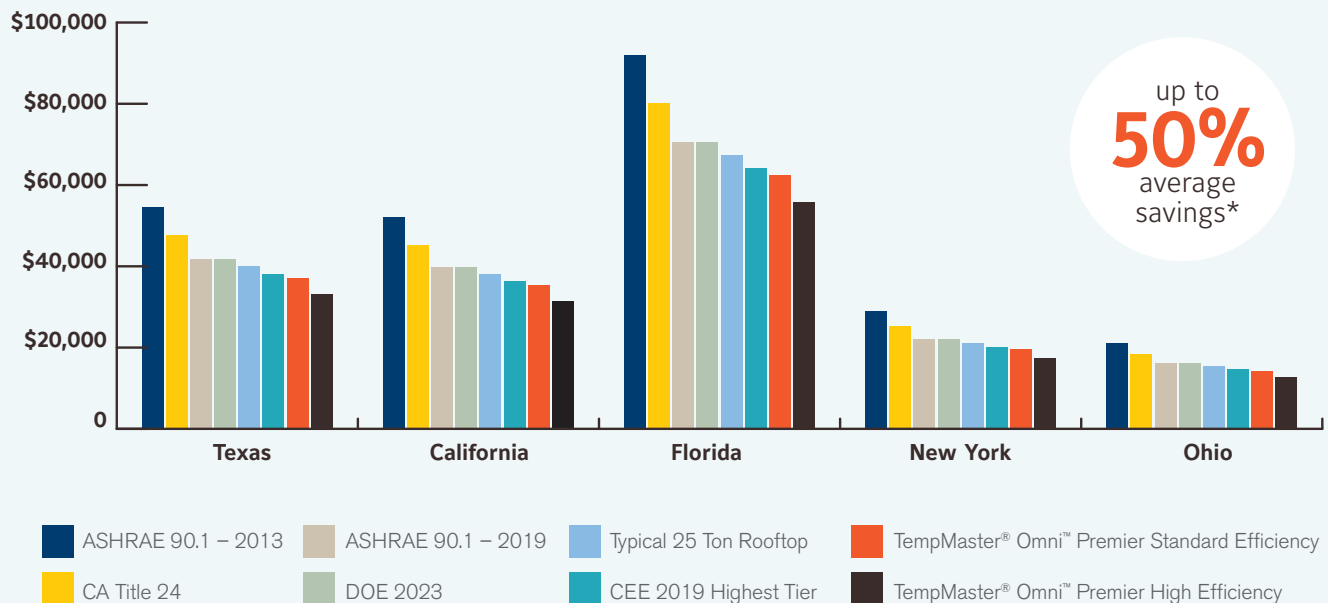
UNMATCHED EFFICIENCY

TempMaster® Omni™ Premier commercial rooftop units offer **class-leading standard efficiency** levels and meet aggressive **Department of Energy (DOE) 2023 energy efficiency standards**. Offered in standard efficiency, high capacity or high efficiency, TempMaster® Omni™ Premier units can provide up to 50% greater efficiency at part-load than is required, depending on the standard:

- ASHRAE 90.1 – 2013
- ASHRAE 90.1 – 2019
- DOE 2023
- Consortium on Energy Efficiency (CEE) 2019 highest tier ratings
- California Title 24 and other state and local stretch codes

Available modulating options further improving energy efficiency include compressors, energy recovery wheels (ERW) and gas and electric heat. Through advanced compressor staging algorithms, TempMaster® Omni™ Premier rooftop units can use four on/off compressors, providing more than 10 steps of cooling control. This is a fundamental advantage in helping to maintain cooling coil leaving air temperatures when compared with equivalent machines that would typically only provide four steps of cooling control. Standard direct-driven plenum (DDP) supply fans transfer motor power more efficiently while the standard, double-wall foam insulated cabinets provide improved thermal efficiency and enhanced indoor air quality. The result? **Significant cost-savings over the life of a single rooftop unit for the typical building owner.**

25 Ton Energy Consumption (\$) Costs Over 15 Years

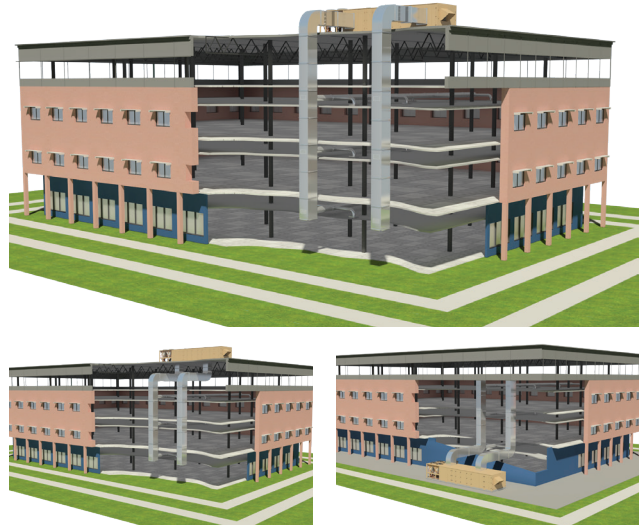


**Based on high efficiency, cooling only, 460V TempMaster® Omni™ Premier model performance vs. units operating at the ASHRAE 90.1-2013 standard.*

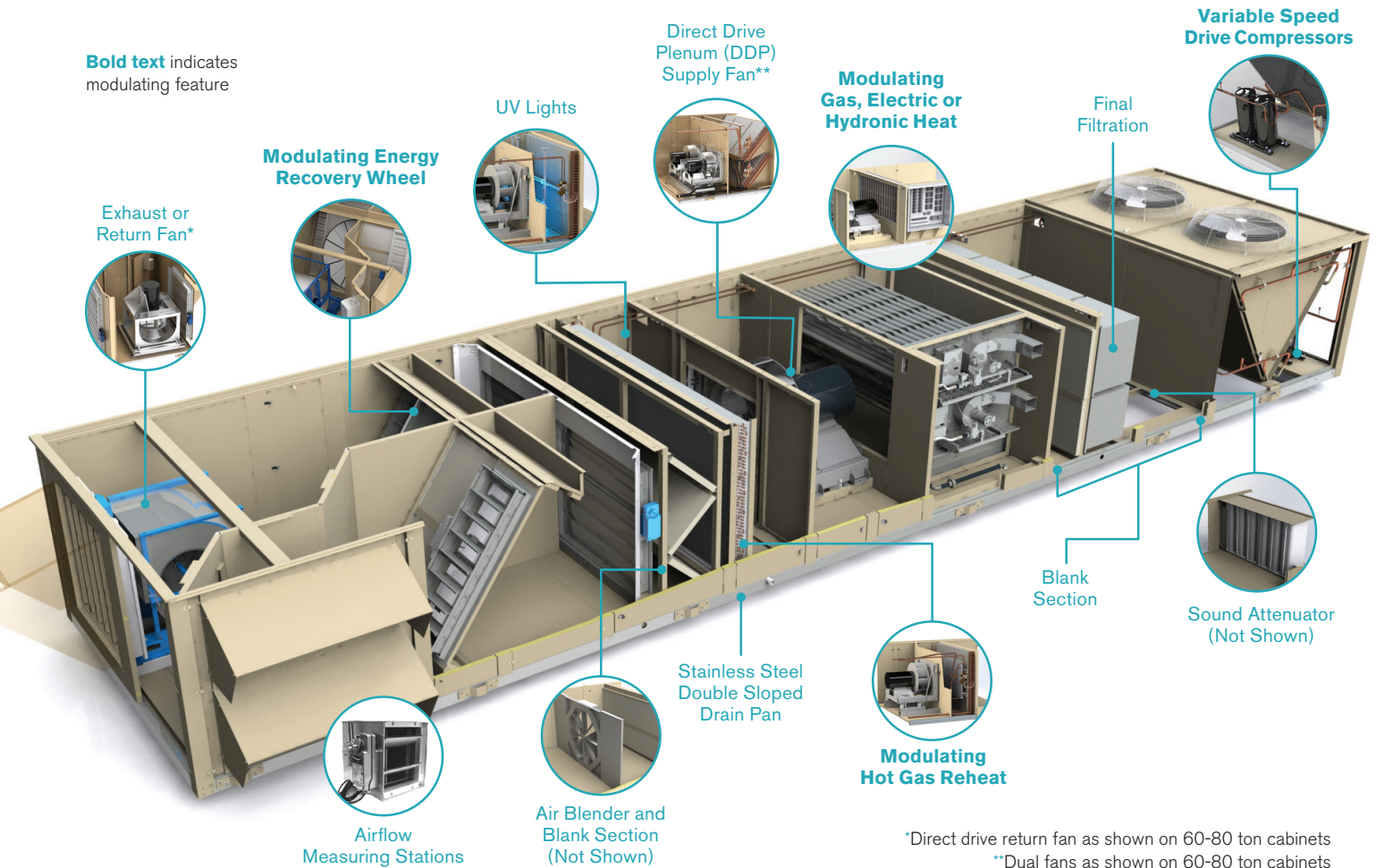
HASSLE-FREE SPECIFICATION

TempMaster® Omni™ Premier rooftop units are engineered to save money, right from the start, by streamlining design. Integrated system selection tools with readily accessible building information modeling (BIM) files, improved submittals and unit-specific sequences of operation make specification easier than ever. Further design flexibility is provided on these economic, high-performing base models through the most complete range of factory options, including:

- Various airflow path configuration options
- Coil coatings, humidity control and high heat options for region-specific concerns
- Modulating options for improved comfort
- Indoor environmental quality (IEQ) options
- Blank sections available for factory or field-installed options
- Split ship available for 60-80 tons



Bold text indicates modulating feature



*Direct drive return fan as shown on 60-80 ton cabinets

**Dual fans as shown on 60-80 ton cabinets

FASTER INSTALLATION, STARTUP AND COMMISSIONING

Regardless of the project, TempMaster® Omni™ Premier rooftop units get contractors off the job faster. Our dedicated factory support and contractor training help ensure proper installation, commissioning and startup. Units arrive ready to go – with optional components, such as smoke detectors, installed at the factory to simplify code compliance and streamline the process. We also provide blank sections to accommodate additional features without needing to find space in the ductwork. Optional airflow measurement stations are available to confirm airflow and optimize control.

To simplify system configuration and minimize startup time expense, startup wizards, a 5.5-inch OLED display and an optimized numeric keypad are standard on all units.

Even better, TempMaster® Omni™ Premier rooftops are **Smart Equipment enabled**. This sophisticated, prepackaged controls platform helps maximize control for **greater efficiency, extended equipment life and reduced operating costs**. It is installed at the factory and “arrives alive.”



SOURCE 1® is the exclusive supplier of genuine, factory-authorized service parts for TempMaster® Omni™ Premier 25-80 ton rooftops. SOURCE 1 also offers a broad variety of universal HVAC parts and accessories. For assistance, contact a TempMaster® sales representative or the SOURCE 1 Customer Service Team.



Smart Equipment controls provide a full array of user-adaptable parameters, including set points for economizer operation, variable air volume control and more, allowing **efficiency-improving system customization** for almost any installation.



Smart Equipment provides **control across all available rooftop units** and integrates with other control interfaces, including zone controllers and other building management systems.



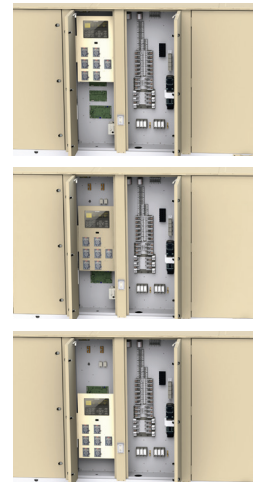
Optional high-end graphical user interface (GUI) features a full-color touchscreen that provides **quick access** to key operating information, including system status, performance metrics, schedule parameters and more.

EASIER SERVICING

Reducing maintenance and improving serviceability are key to lowering life cycle costs, which is why we designed TempMaster® Omni™ Premier commercial rooftop units with a remarkable combination of simplicity and accessibility.

- **Engineered for easier service with optional features, including:**

- Extended fan bearing grease lines
- Service viewports and internal lights
- Differential pressure gauges
- Condenser coil-cleaning hatches
- Adjustable height, single-point latching door option
- Disconnect switches
- Convenience outlets
- Refrigerant shut-off valves, service ports and pressure transducers
- Condenser safety tie-off
- Replaceable core filter driers
- Adjustable height human interface (shown at right)
- Airflow measurement stations
 - Outside air
 - Supply fan
 - Return fan
- Single-point latching doors



- **Model-specific sequence of operation (SOO) data**



Optional Mobile Access Portal (MAP) Gateway with Wi-Fi® hotspot provides access to commissioning, configuration and maintenance logs using a mobile smart device – **no need to be on the roof.**

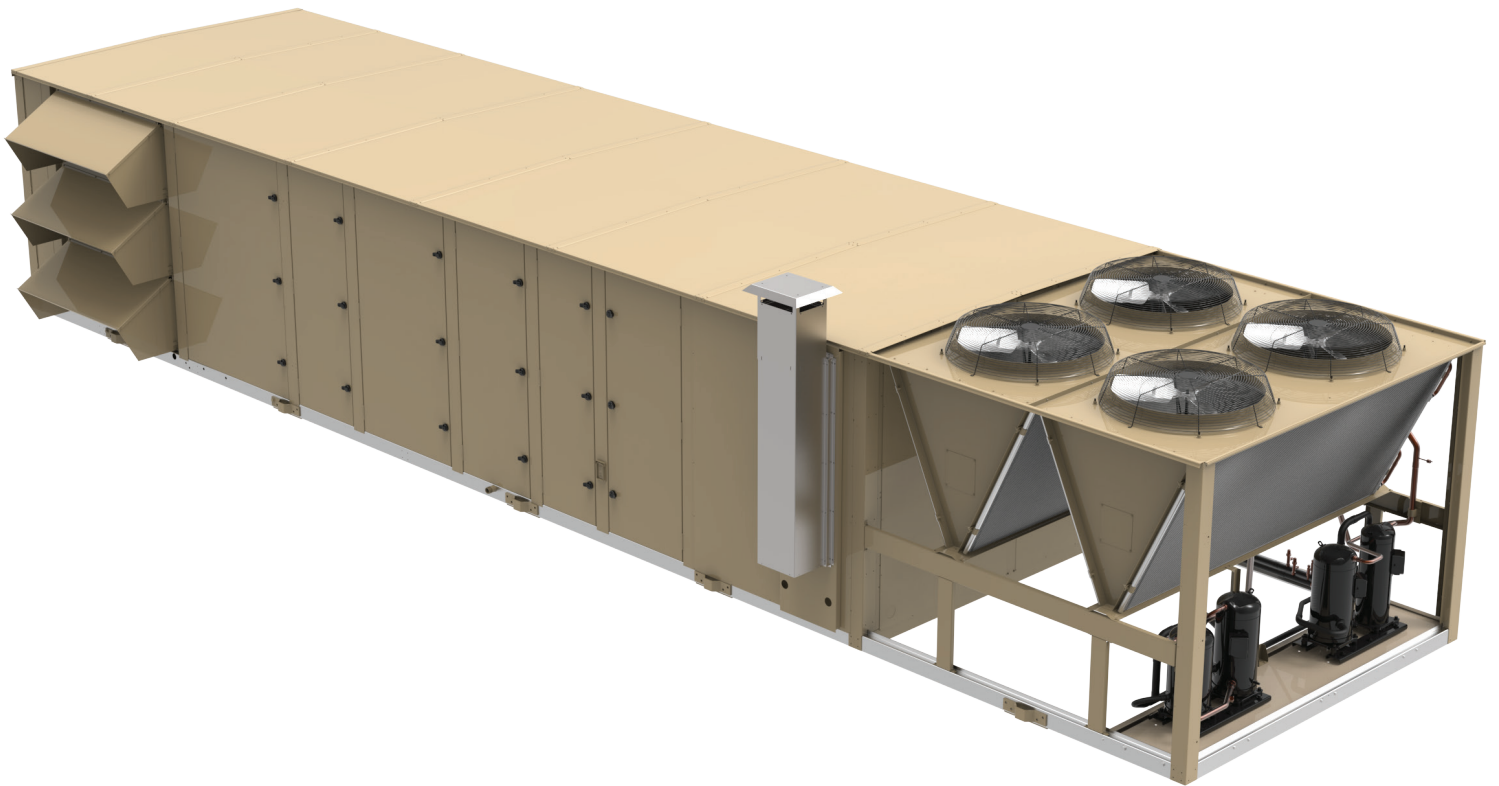


RTU Toolkit app for Android and iOS can provide helpful information by scanning a unique QR code on each rooftop, enabling on-demand access to unit-specific details, technical literature and a direct connection to technical support.*



Smart Equipment provides **seamless integration** with leading building controls systems, including Verasys.

* The RTU Toolkit app can help qualifying technicians conduct and submit startup information for a promotional 6-month or 1-year labor warranty. Learn more about the offer and availability from your local sales office.





GREATER PEACE OF MIND

TempMaster® Omni™ Premier units use the latest compressor, fan and heat-transfer technologies in a highly optimized system design and are assembled in the new, state-of-the-art Johnson Controls **Rooftop Center for Excellence** in Norman, Oklahoma. But before a single unit ever gets built, the TempMaster® Omni™ Premier design has already been optimized using “Design for Quality” principles and proprietary modeling and testing techniques in our **Advanced Technology Lab**. In addition, extensive field testing is performed to ensure unit reliability in demanding applications and varying conditions. Before it leaves the factory, end-of-line testing is conducted on every rooftop unit to confirm quality, performance and safety compliance.

Improved delivery tracking and **industry-leading lead times** with faster rapid-ship availability provide greater confidence for compressed project timelines. Once in the field, TempMaster® Omni™ Premier units are designed to deliver performance that won't require a second thought.

Redundancy options include:

- Multiple refrigeration circuits
- Variable Frequency Drives (VFDs)
- Gas and electric heat modules
- Dual supply fans on 60-80 ton cabinets
- Optional VFD bypass for return and exhaust fans. For direct driven return fans, an optional redundant VFD can be supplied
- Twinning of multiple units on a single supply and return duct for continuous operation in the event of a partial system failure

Corrosion-resistant coil coatings and **rapid start algorithms** (which minimize compressor damage) ensure unit uptime for mission-critical applications. Plus, we back it all with **industry-leading warranties**: a 1-year parts warranty is standard on all TempMaster® Omni™ Premier units, along with either a 6-month or 1-year promotional labor warranty (vs. the industry-standard, 30-day labor warranty) when started by a certified contractor. Should additional assistance ever be required for a TempMaster® Omni™ Premier unit, in-market factory tech support is just a phone call away – contact a sales representative for details.

FROM THE NAME YOU TRUST



TempMaster® Omni™ Premier commercial rooftop units are designed, engineered and assembled in the United States by TempMaster®, the name trusted for leadership in the HVAC category. TempMaster® Omni™ Premier rooftop units meet the needs of the commercial rooftop market for designers, contractors, building owners and maintenance staff alike. With TempMaster® Omni™ Premier rooftops, we deliver comfort cooling that is easily specified, efficiently installed, reliably operated and economically maintained. Then we back it with industry-standard certifications, lab-verified performance, field-tested quality and class-leading warranties. It's what makes TempMaster® Omni™ Premier rooftops the most flexible, dependable rooftop solution on the market today.



THE TEMPMASER BRAND OF JOHNSON CONTROLS

©2020 Johnson Controls, Inc. 5005 York Drive, Norman, OK 73069
Subject to change without notice. PUBL-8994-B-1220. Supersedes: PUBL-8994-A-0918. All rights reserved.

FOR MORE INFORMATION, VISIT [TEMPMASTER-HVAC.COM/OMNIPREMIER](https://tempmaster-hvac.com/omnipremier)