

# Installation Manual for Drain Adaptor

|       |           |
|-------|-----------|
| Model | DBS-TP10A |
|-------|-----------|

This drain adaptor is for the drain pipe connection in order to enable use of the outdoor unit bottom base as a drain pan.

Install it as follows.

### **IMPORTANT NOTICE:**

- Read and understand this manual before using this drain adaptor.
- Perform the test run after installation to check for abnormalities.
- Forward this information to the building owner and request that they maintain all the equipment manuals.
- Signal words are used to identify levels of hazard seriousness. Definitions for identifying hazard levels are provided below with their respective signal words.

**CAUTION**

 : Indicates a hazardous situation that, if not avoided, could result in minor or moderate injury.

## 1. Applicable Outdoor Unit

|                         |                         |
|-------------------------|-------------------------|
| Applicable Outdoor Unit | Capacity                |
| Top Flow Type           | 72,000 to 120,000 Btu/h |

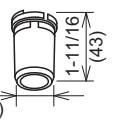
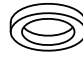

### **NOTE:**

The applicable outdoor unit may be different depending on the product series. Be sure to confirm with the product catalog before installation.

## 2. Before Installation

Check that all the following accessories are packed with the unit before installation.

Unit: inch (mm)

| No. | Accessory   | Qty. | Remarks                        |
|-----|---|------|--------------------------------|
| ①   | Drain Adaptor<br>(VP20 Equivalent) <div style="display: flex; align-items: center; margin-top: 5px;">  <div style="margin-left: 10px;">             Outer Diameter <math>\phi 31/32</math> (<math>\phi 25</math>)<br/>             (Inner Diameter <math>\phi 25/32</math> (<math>\phi 20</math>))           </div> </div> | 2    | Connecting for Drain Piping    |
| ②   | Rubber Cap <div style="text-align: center; margin-top: 5px;">  </div>  | 4    | Fixing for ① Adaptor and ③ Cap |
| ③   | Drain Cap <div style="text-align: center; margin-top: 5px;">  </div>   | 2    | Plug for Drain Hole            |

## 3. Installation Work

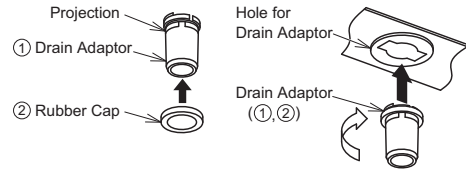
**CAUTION**

Place the outdoor unit on a flat foundation or block and secure it at least 3-15/16 inch (100mm) higher than the ground. For smooth drainage, install the outdoor unit with a slight incline on the drainage side (rear side).

### 3.1 Installation of Drain Adaptor

The drain adaptor is for the drain pipe connection so as to use the outdoor unit bottom base as a drain pan.

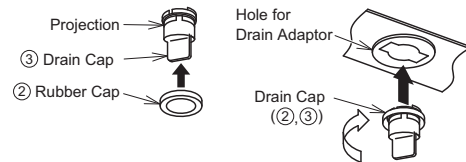
- (1) Put the ② rubber cap in the ① drain adaptor (to the upper part of the drain adaptor projection) in the direction of the arrow.
- (2) Put the drain adaptor in the hole for the drain adaptor of the outdoor unit bottom base until it is securely fixed. (approx. 40°)  
(The drain adaptor can be fit into the bottom base until it stops.)



### 3.2 Installation of Drain Cap

The drain cap is a component to cover a hole.

- (1) Put the ② rubber cap in the ③ drain cap (to the upper part of the drain adaptor projection) in the direction of the arrow.
- (2) Put the drain cap in the hole for the drain adaptor of the outdoor unit bottom base until it is securely fixed. (approx. 40°)  
(The drain cap can be fit into the bottom base until it stops.)

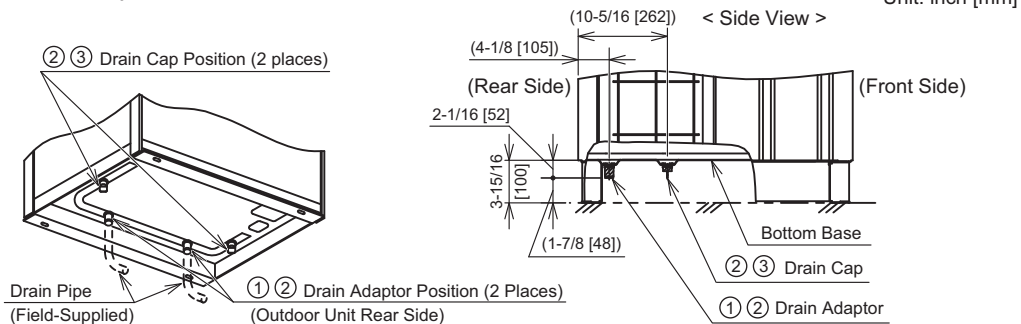


#### CAUTION

Use a rubber cap when fixing the drain adaptor and drain cap. (No rubber cap may lead to water leakage.) After fixing, ensure that there is no water leakage from the drain cap by pouring water into the bottom base and then draining it from the drain adaptor.

< Installation Position >

[ Example ] Capacity: 72,000 Btu/h



#### CAUTION

Securely fix the drain adaptor, rubber cap and drain cap at the bottom base so it doesn't become loose when connecting the drain pipe.

## 4. Utilization in Cold Area

#### CAUTION

Do not use the drain adaptor in an area where drain water may be frozen.  
(The drain water in the drain pipe may be frozen and then the drain pipe may crack.)

- (1) In a snow area, water from the heat exchanger may be frozen on the surface of the bottom base. This may lead to poor drainage. Therefore, do not use the drain adaptor in this type of area.
- (2) In the drainage method according to this manual, some of the defrost drain water dripped from the inlet protection grille may flow out over the bottom base of the product.  
To prevent this, provide a drain pan larger than the bottom surface of the product. Secure the drain pan and the discharge pipe between the bottom part of the product and the foundation prior to discharge.