

# Installation Manual for Toppling Prevention Tool

**Model: ASG-SW20A**

This Toppling Prevention Tool is to prevent the outdoor unit from overturning by strong winds or an earthquake (when the Snow Protection Hood is attached). Install it as instructed in this manual.

## **IMPORTANT NOTICE:**

- Read and understand this manual before using this Toppling Prevention Tool.
- Perform the test run after installation to check for abnormalities.
- Forward this information to the building owner and request that they maintain all the equipment manuals.
- Signal words are used to identify levels of hazard seriousness.

Definitions for identifying hazard levels are provided below with their respective signal words.



: Indicates a hazardous situation that, if not avoided, could result in minor or moderate injury.

## 1. Applicable Unit

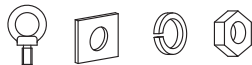
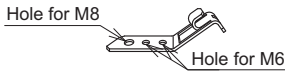

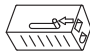
Name	Toppling Prevention Tool	
Model	ASG-SW20A	
Required Qty.	1	1
Applicable Outdoor Unit	Top Flow Type 72,000 to 120,000 Btu/h	Side Flow Type 36,000 to 60,000 Btu/h

### **NOTE:**

The applicable outdoor unit may be different depending on the product series. Be sure to confirm with the product catalog before installation.

## 2. Before Installation

Check that all the following accessories are packed with the unit before installation.

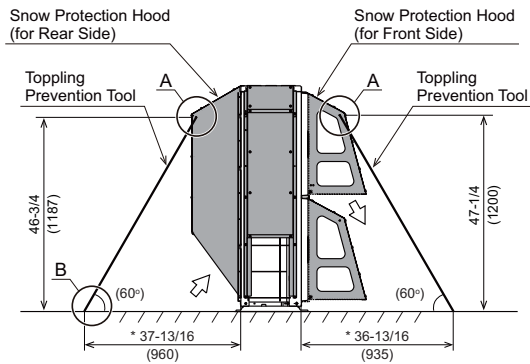
No.	Accessory	Qty.
①	 (with Square Washer, Spring Washer and Nut)	4 sets for each
②	 Hole for M8 Hole for M6	4
③	 $\phi 1/16$ inch (2mm) x 66 ft (20m)	1
④		8

### 3. Installation Procedures

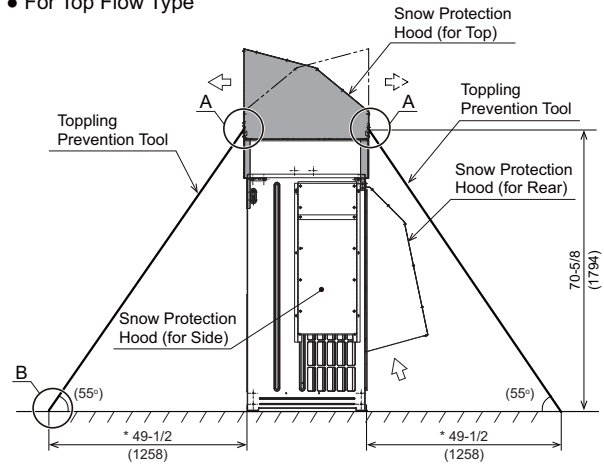
- (1) Refer to figure **A** below and attach the eyebolt (①) to the  $\phi 5/16$ inch (8mm) hole on the lower part of the Snow Protection Hood.
- (2) Tighten the securing plate (②) to the foundation with the anchor bolt for assembling.  
Refer to figure **B** below and tighten the anchor bolt.  
Insert the wire (③) to the fastening fitting (④) in the tightening direction.  
Pull the wire with pliers and adjust it to be tight and securely hold the unit in place.
- (3) Cut the extra length of the wire with cutting pliers after adjustment.

Unit: inch (mm)

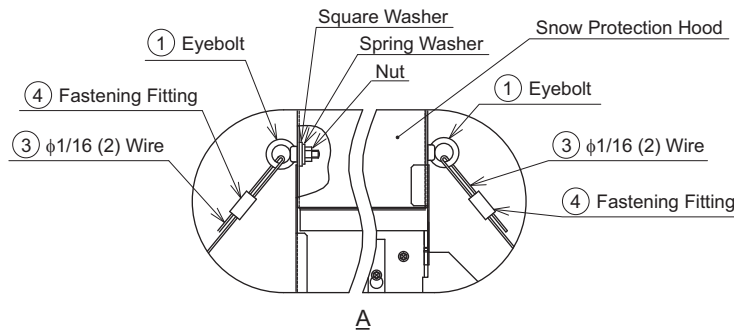
● For Side Flow Type




● For Top Flow Type



\* The estimated dimensions of installation with a recommended wire angle.



The arrow indicates the insert direction of the wire



Pull the lever to disengage locking mechanism to adjust wire tension. Re-engage lever after proper tension.

< Caution for Installation >

- (1) To prevent split wire edge, wrap up the wire with plastic tape when cutting for length adjustment.
- (2) It may be difficult to unlock the fastening fitting while applying tension to the wire. Pay attention for sudden change in wire tension when unlock the fastening fitting.
- (3) Wrap the fastening fitting with plastic tape to prevent unexpected unlocking after securing the wire position.

