

Installation Manual for Drain Adaptor

Model: DBS-26

This Drain Adaptor is for the drain pipe connection in order to enable use of the outdoor unit bottom base as a drain pan. Install it as instructed in this manual.

IMPORTANT NOTICE:

- Johnson Controls pursues a policy of continuous improvement in design and performance of products. We reserve the right to vary specifications without notice.
- No part of this manual may be reproduced without Johnson Controls' written permission.
- Keep this manual for future reference.
- Johnson Controls cannot anticipate every possible circumstance that might involve a potential hazard.
- This kit is designed for a combination of Johnson Control air conditioners. Do not use this kit by itself or in combination with other companies' air conditioners.
- Perform a test run after installation to check for abnormalities.
- Signal words are used to identify levels of hazard seriousness. Definitions for identifying hazard levels are provided below with their respective signal words.



WARNING

: Indicates a hazardous situation that, if not avoided, could result in death or serious injury.



CAUTION

: Indicates a hazardous situation that, if not avoided, could result in minor or moderate injury.

1. Applicable Unit

Name	Drain Adaptor
Model	DBS-26
Required Qty.	1
Applicable Outdoor Unit	Side Flow Type 36,000 to 60,000 Btu/h




NOTE:

The applicable outdoor unit may be different depending on the product series. Be sure to confirm with the product catalog before installation.

2. Before Installation

Check that all the following accessories are packed with the unit before installation.

Unit: inch (mm)

No.	Accessory	Qty.	Remarks
①	Drain Adaptor (VP20 Equivalent)  Outer Diameter $\phi 31/32$ ($\phi 25$) (Inner Diameter $\phi 25/32$ ($\phi 20$))	1	Connecting for Drain Piping
②	Rubber Cap 	1	Securing for ① Adaptor
③	Drain Cap 	4	Plug for Drain Hole

3. Installation Work

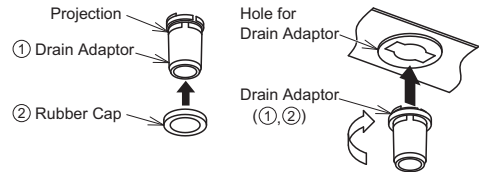
CAUTION

Place the outdoor unit on a flat foundation or block and secure it at least 3-15/16 inch (100mm) higher than the ground. For smooth drainage, install the outdoor unit with a slight incline on the drainage side (rear side).

3.1 Installation of Drain Adaptor

The Drain Adaptor is for the drain pipe connection for use on the outdoor unit bottom base as a drain pan.

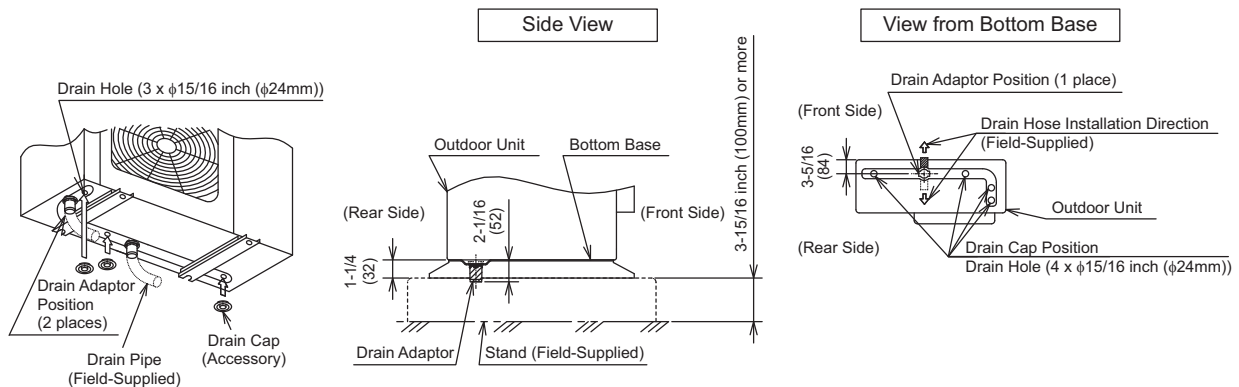
- (1) Put the ② rubber cap in the ① Drain Adaptor (to the upper part of the Drain Adaptor projection) in the direction of the arrow.
- (2) Put the Drain Adaptor in the hole for the Drain Adaptor of the outdoor unit bottom base until it is securely fixed. (approx. 40°)
(Fit the Drain Adaptor into the bottom base until it stops.)



3.2 Installation of Drain Cap

The drain cap is a component to cover a hole.

Put the drain cap over the drain hole of the outdoor unit bottom base. Then, push the rubber cap to fit with the hole until a “click” sound is heard.



CAUTION

- (1) The drain cap is used exclusively for the drain hole of the outdoor unit bottom base (φ15/16 inch (φ24mm)). Do not use it for the hole for the Drain Adaptor.
- (2) Use a rubber cap when securing the Drain Adaptor and drain cap. (No rubber cap should allow water leakage.) After securing, ensure that there is no water leakage from the drain cap by pouring water into the bottom base and then draining it from the Drain Adaptor.
- (3) Securely fix the Drain Adaptor, rubber cap and drain cap at the bottom base so it doesn't become loose when connecting the drain pipe.

4. Utilization in Cold Area

 CAUTION
--

Do not use the Drain Adaptor in an area where drain water may be frozen.
(The drain water in the drain pipe may be frozen and then the drain pipe may crack.)

- (1) In a snow area, water from the heat exchanger may be frozen on the surface of the bottom base. This may lead to poor drainage. Therefore, do not use the Drain Adaptor in this type of area.
- (2) In the drainage method according to this manual, some of the defrost drain water dripped from the inlet protection grille may flow out over the bottom base of the product.
To prevent this, provide a drain pan larger than the bottom surface of the product. Secure the drain pan and the discharge pipe between the bottom part of the product and the foundation prior to discharge.