

Installation Manual for Seismic Kit

Model: SSK-TP10A

During an earthquake this Seismic Kit prevents destruction or damage to the outdoor unit by improving its strength and fracture toughness.

IMPORTANT NOTICE:

- Johnson Controls pursues a policy of continuous improvement in design and performance of products. We reserve the right to vary specifications without notice.
- No part of this manual may be reproduced without Johnson Controls' written permission.
- Keep this manual for future reference.
- Johnson Controls cannot anticipate every possible circumstance that might involve a potential hazard.
- This kit is designed for a combination of Johnson Control air conditioners. Do not use this kit by itself or in combination with other companies' air conditioners.
- Read and understand this manual before using this Seismic Kit.
- Be sure to follow this "Important Notice" related to safety.
- Perform a test run after installation to check for abnormalities.
- Signal words are used to identify levels of hazard seriousness. Definitions for identifying hazard levels are provided below with their respective signal words.



: Indicates a hazardous situation that, if not avoided, could result in minor or moderate injury.

1. Applicable Unit

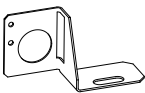
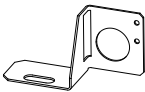



Name	Seismic Kit
Model	SSK-TP10A
Required Qty.	x 1
Applicable Outdoor Unit	(H,Y)VAHP***B(3,4)1S (H,Y)VAHR***B(3,4)1S (H,Y)VAHP***B(3,4)1CW

2. Installation Work

- (1) Be sure to use supplied bolts and secure them when you install the Seismic Kit to the outdoor unit.
- (2) The additional service space is required to install the Seismic Kit.

3. Before Installation

Check that all the following accessories are packed with the unit before installation.

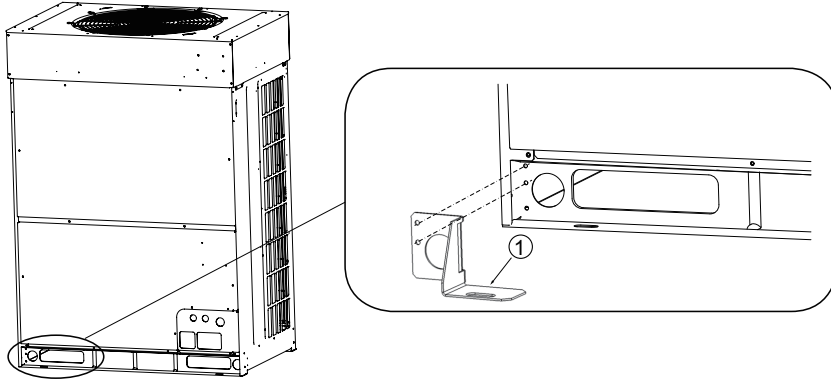
No.	Accessory	Qty.	Remarks
①	Left Support	 2	
②	Right Support	 2	
③	Washer	 4 (1)	(1): Spare
④	Bolt (M5)	 8 (2)	(2): Spare
⑤	Nut (M5)	 8 (2)	(2): Spare

4. Seismic Kit Installation Procedures

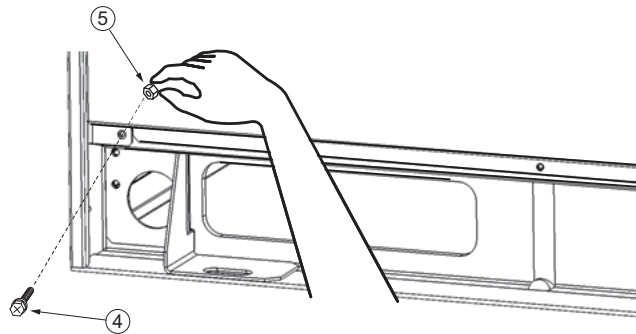
After confirming the outdoor unit model, install the Seismic Kit according to the following procedures. Install the Seismic Kit securely with the supplied bolts. If you don't tighten the bolts well enough, the unit may vibrate. If you screw the bolts too tightly, you may damage the bolt threads.

[for Front Left]

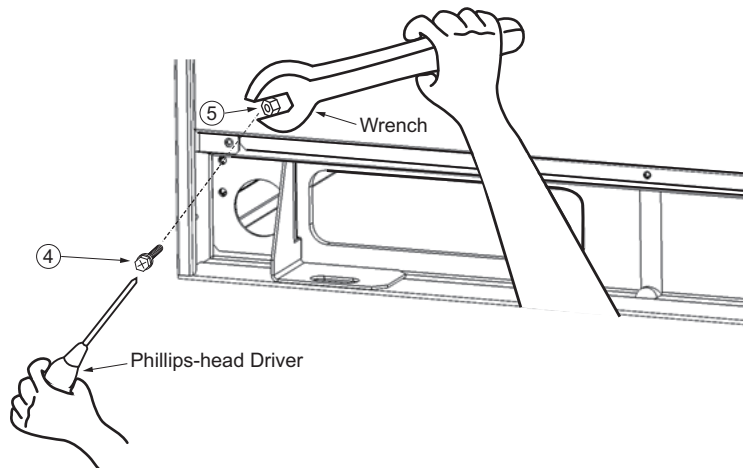
- (1) Adjust the installation hole position of the left support (①) to the outdoor unit bottom base.



- (2) Attach the left support (①) to the outdoor unit with bolts (④) through the installation hole. Put a hand into the square hole on the outdoor unit bottom base to temporarily fasten the bolt and the nut (⑤) (two portions).



- (3) Tighten the nut (⑤) with an adjustable wrench or etc., then securely tighten the bolt (④) with a Phillips-head driver from the front of the outdoor unit (two portions).

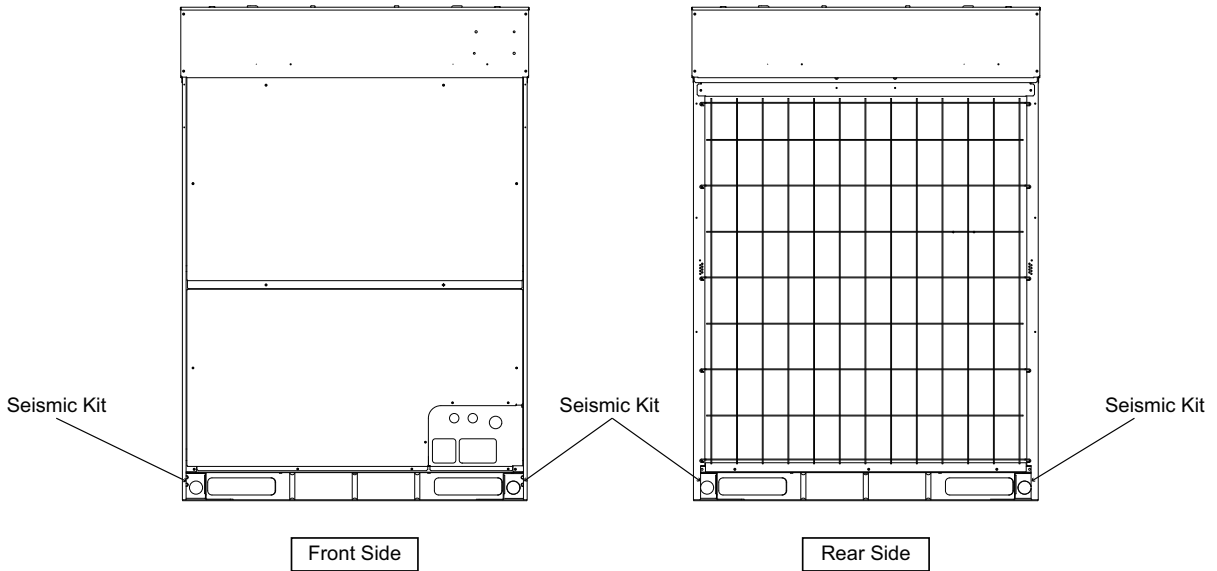


- (4) Install the left support (①) to the back left of the outdoor unit bottom base and the right support (②) to the front and back right of the outdoor unit bottom base.

NOTE:

The washer (③) included with this product is for the outdoor unit's installation. Stick the washer (③) to the outdoor unit with duct tape or keep the washer (③) in the outdoor unit accessory bag.

5. Installation Appearance



6. Outdoor Unit Installation Procedure

CAUTION

Install the Seismic Kit to the outdoor unit before you install the outdoor unit at the site. Install the outdoor unit with an anchor bolt (M12) attached at the installation position with the nut (M12) through the washer (③). Fasten the bolt tightly.

NOTE:

To secure the earthquake-resistant strength of the outdoor unit, use the washer (③) for the installation. Refer to the “Outdoor Unit Installation Manual” to the installation work.

