

## Installation Manual for Connector Cable to Indoor Unit

|       |           |
|-------|-----------|
| Model | PCC-CN8-H |
|-------|-----------|

## 1. Applicable Unit

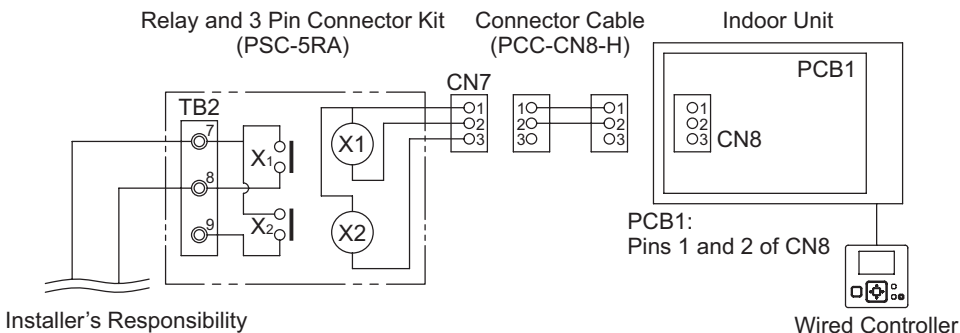
This connector cable is used for connection between PSC-5RA connector (CN7) and indoor unit PCB connector (CN8) for auxiliary heater control.

## 2. Contents of Connector Cable

| No. | Name                                | Qty. |
|-----|-------------------------------------|------|
| 1   | Connector Cable                     | 1    |
| 2   | Cable Band (for securing the cable) | 2    |

### 3. How to Use

Connect the connector cable as shown below.  
Secure excess cable using the cable band (accessory).



During installation, refer also to the “Installation and Maintenance Manual” for connecting indoor unit.