

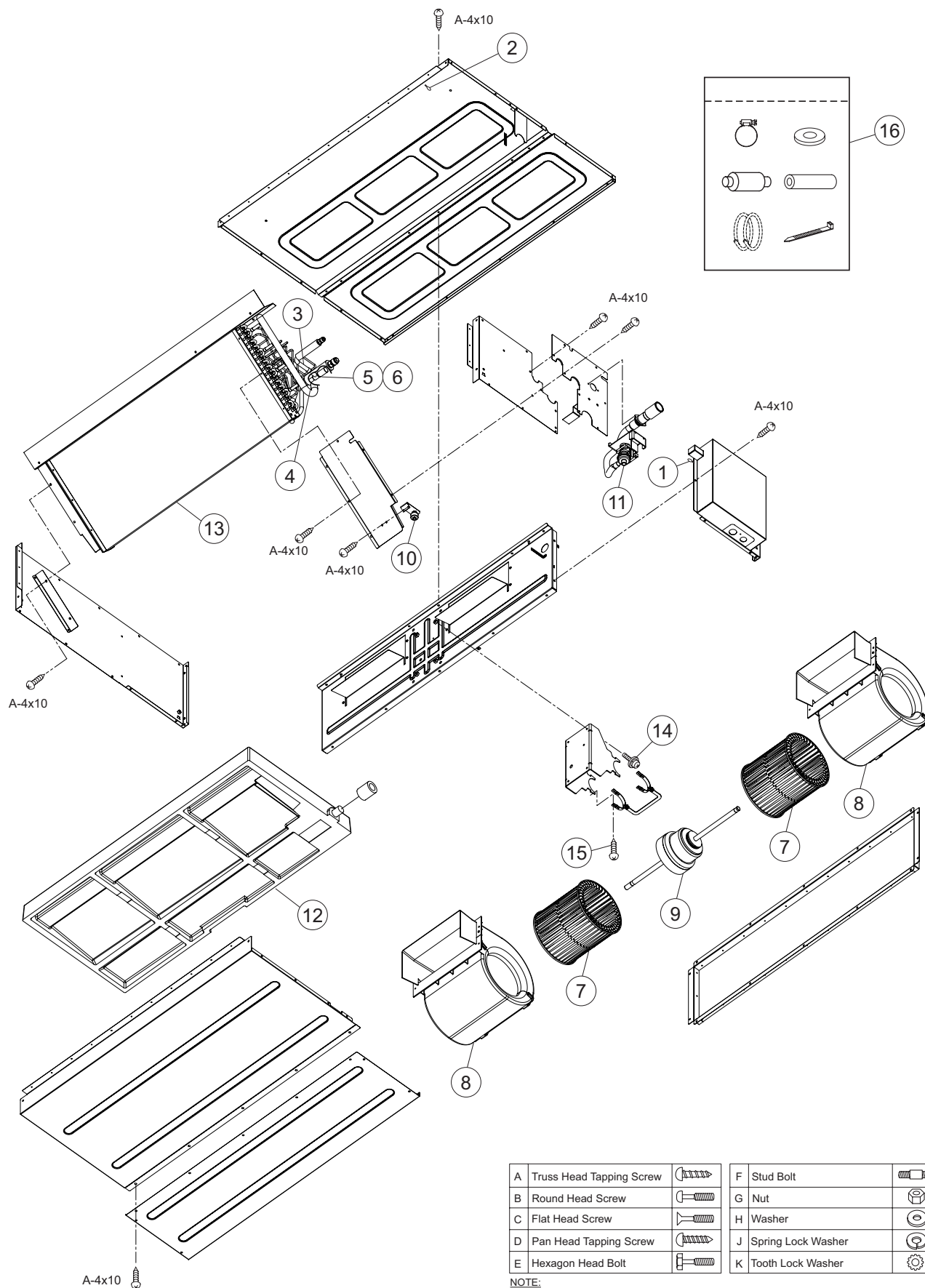
MODEL: (H,Y)IDH018B21S

NOTE:

Contact your distributor for the delivery date and price of parts.

LOCATION OF SERVICE PARTS IN THE UNIT for Ducted High Static

MODEL: (H,Y)IDH018B21S



NOTE:

The parts without order number are the custom-ordered, and these are not mentioned in the price list. When ordering them, the part name and the drawing number are required.
Contact your distributor for the delivery date and price of parts.

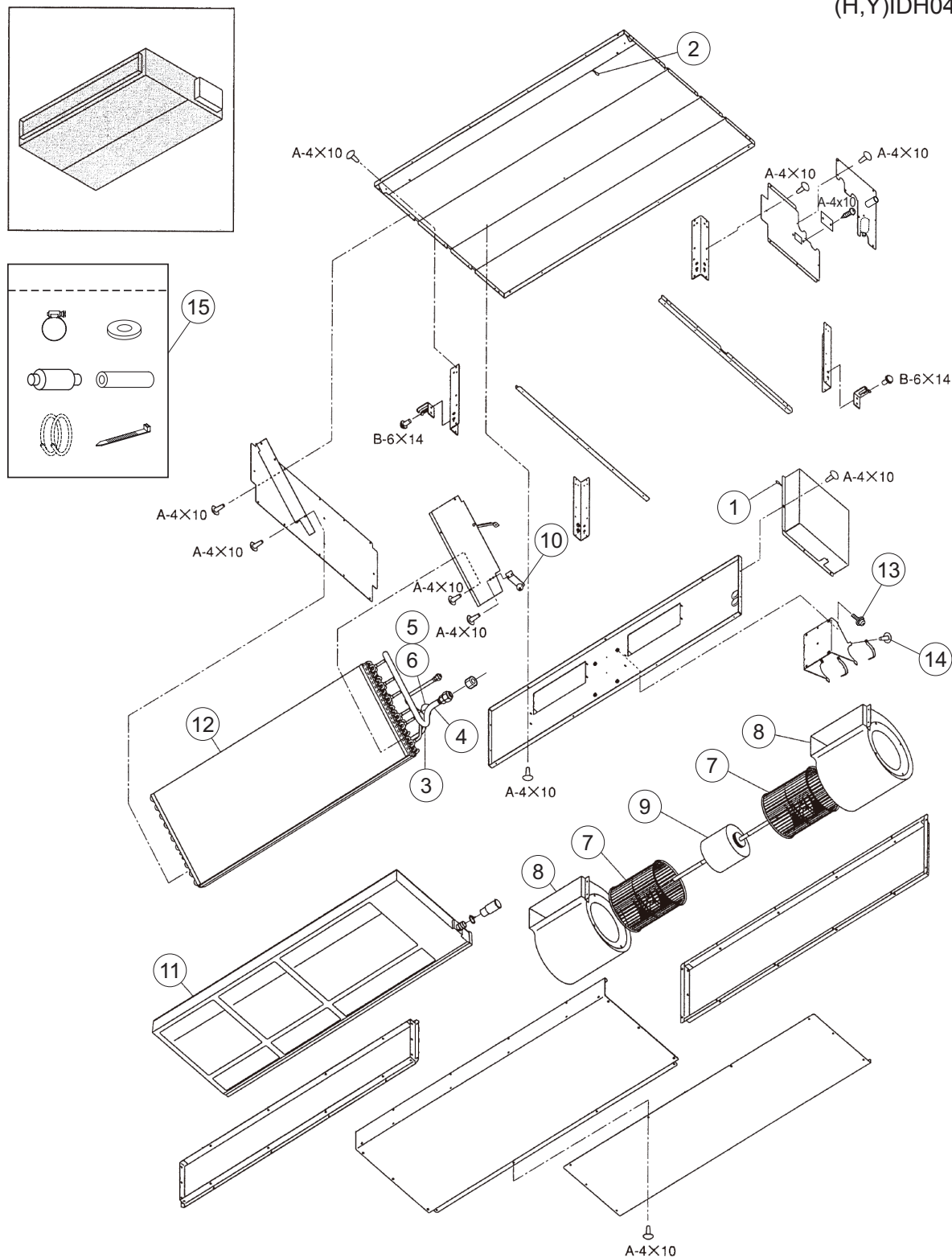
MODEL: (H,Y)IDH024B21S, (H,Y)IDH030B21S,
(H,Y)IDH036B21S, (H,Y)IDH048B21S

NOTE:

The parts without order number are the custom-ordered, and these are not mentioned in the price list. When ordering them, the part name and the drawing number are required.
Contact your distributor for the delivery date and price of parts.

LOCATION OF SERVICE PARTS IN THE UNIT for Ducted High Static

MODEL: (H,Y)IDH024B21S
(H,Y)IDH030B21S
(H,Y)IDH036B21S
(H,Y)IDH048B21S



A	Truss Head Tapping Screw		F	Stud Bolt	
B	Round Head Screw		G	Nut	
C	Flat Head Screw		H	Washer	
D	Pan Head Tapping Screw		J	Spring Lock Washer	
E	Hexagon Head Bolt		K	Tooth Lock Washer	

NOTE:

A protective coating like zinc is applied to iron and steel for unspecified materials like a bolt or screw.

NOTE:

The parts without order number are the custom-ordered, and these are not mentioned in the price list. When ordering them, the part name and the drawing number are required.
Contact your distributor for the delivery date and price of parts.

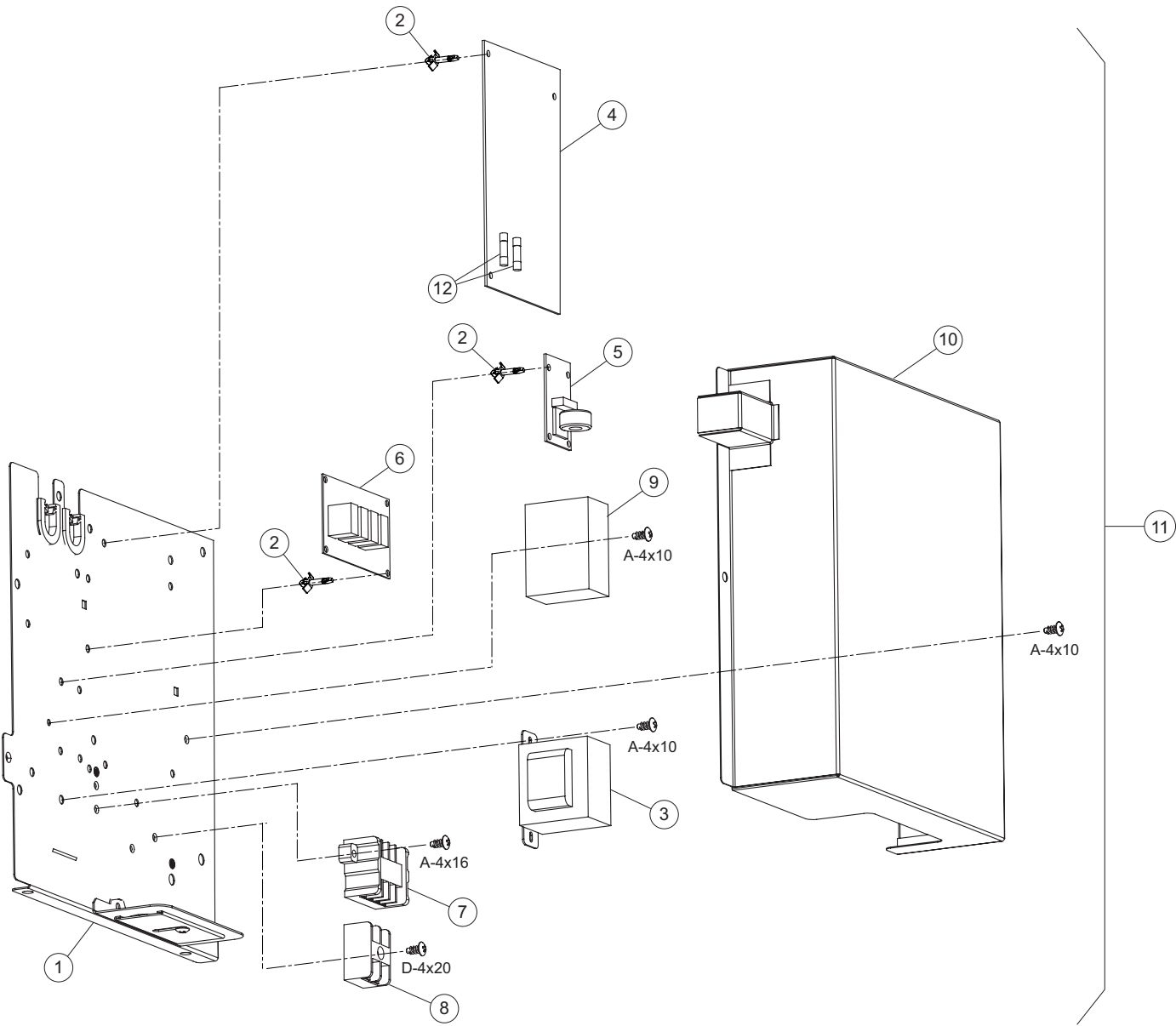
MODEL: (H,Y)IDH018B21S, (H,Y)IDH024B21S, (H,Y)IDH030B21S,
(H,Y)IDH036B21S, (H,Y)IDH048B21S

SPN201507-R2

LOCATION OF SERVICE PARTS IN THE UNIT for Ducted High Static

MODEL: (H,Y)IDH018B21S

< Electrical Box >



A	Truss Head Tapping Screw		F	Stud Bolt	
B	Round Head Screw		G	Nut	
C	Flat Head Screw		H	Washer	
D	Pan Head Tapping Screw		J	Spring Lock Washer	
E	Hexagon Head Bolt		K	Tooth Lock Washer	

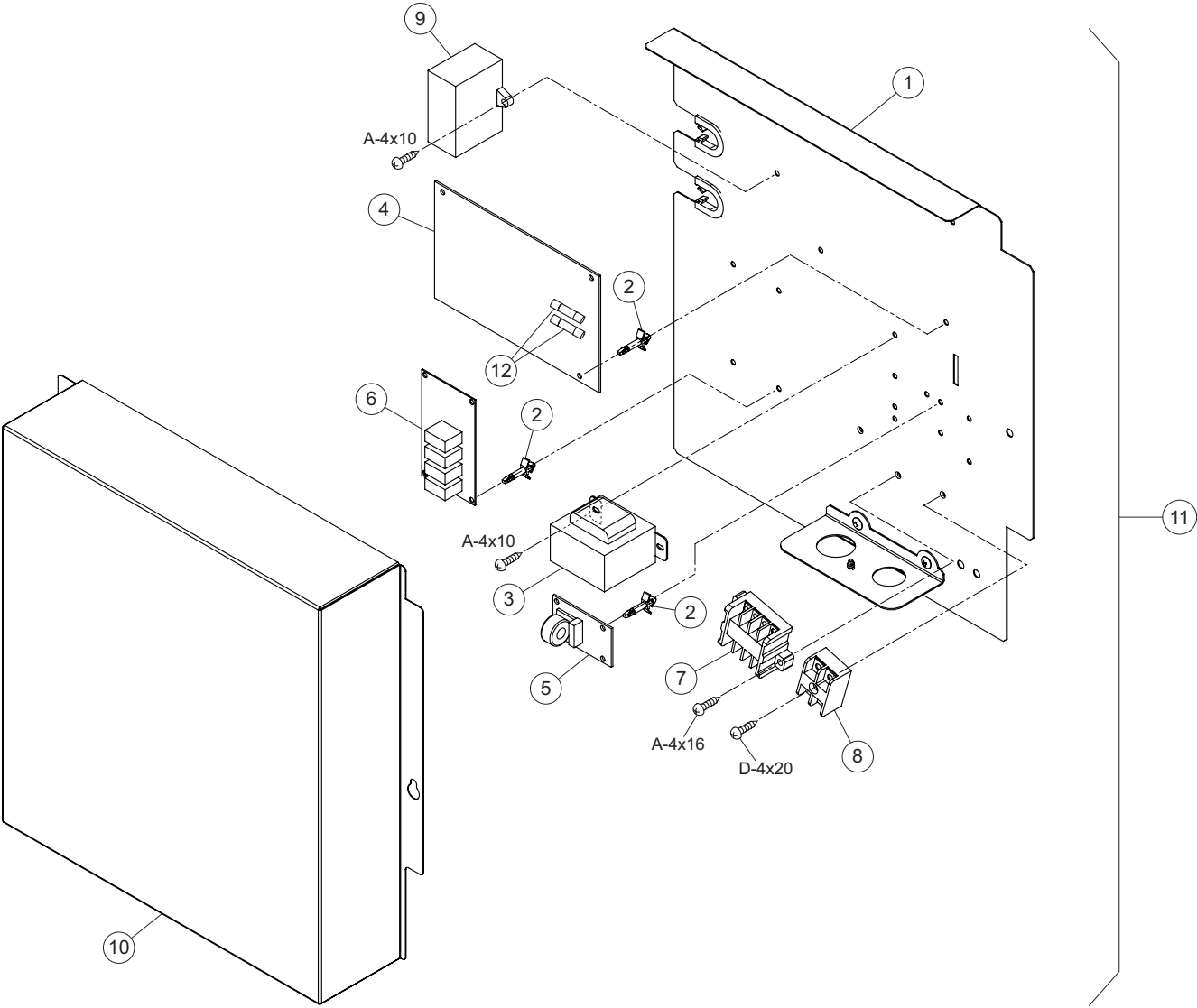
NOTE:
A protective coating like zinc is applied to iron and steel for unspecified materials like a bolt or screw.

NOTE:
The parts without order number are the custom-ordered, and these are not mentioned in the price list. When ordering them, the part name and the drawing number are required.
Contact your distributor for the delivery date and price of parts.

LOCATION OF SERVICE PARTS IN THE UNIT for Ducted High Static

MODEL: (H,Y)IDH024B21S
(H,Y)IDH030B21S
(H,Y)IDH036B21S
(H,Y)IDH048B21S

< Electrical Box >



A	Truss Head Tapping Screw		F	Stud Bolt	
B	Round Head Screw		G	Nut	
C	Flat Head Screw		H	Washer	
D	Pan Head Tapping Screw		J	Spring Lock Washer	
E	Hexagon Head Bolt		K	Tooth Lock Washer	

NOTE:
A protective coating like zinc is applied to iron and steel for unspecified materials like a bolt or screw.

NOTE:
The parts without order number are the custom-ordered, and these are not mentioned in the price list. When ordering them, the part name and the drawing number are required.
Contact your distributor for the delivery date and price of parts.

MODEL: (H,Y,C)IDM006B21S, (H,Y,C)IDM008B21S, (H,Y,C)IDM012B21S

SPN201507-R2

MODEL: (H,Y,C)IDM006B21S
(H,Y,C)IDM008B21S
(H,Y,C)IDM012B21S



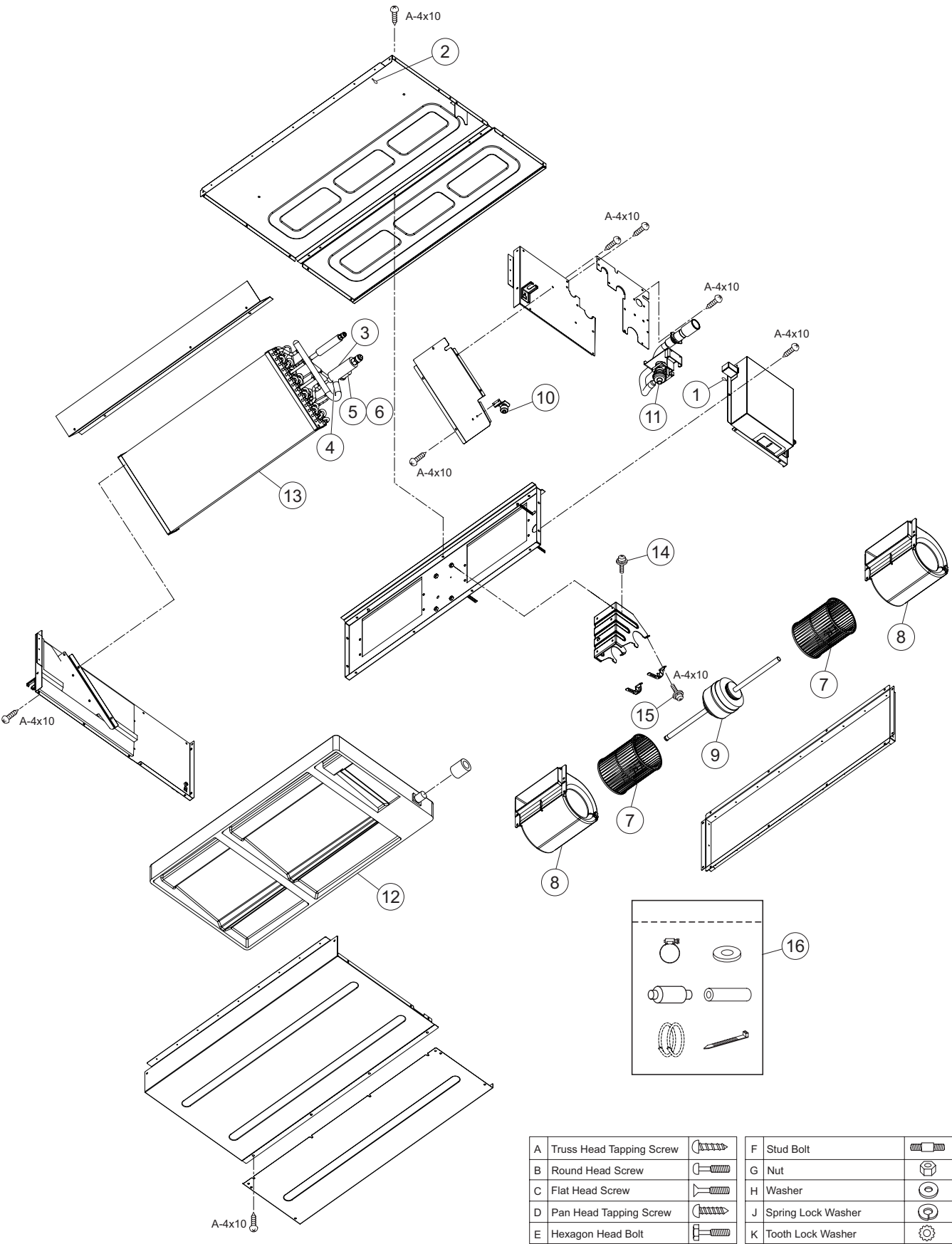
The parts without order number are the custom-ordered, and these are not mentioned in the price list. When ordering them, the part name and the drawing number are required.
Contact your distributor for the delivery date and price of parts.

MODEL: (H,Y,C)IDM015B21S, (H,Y,C)IDM018B21S, (H,Y,C)IDM024B21S,
(H,Y,C)IDM030B21S, (H,Y,C)IDM036B21S, (H,Y,C)IDM048B21S

SPN201507-R2

LOCATION OF SERVICE PARTS IN THE UNIT for Ducted Medium Static

MODEL: (H,Y,C)IDM015B21S
(H,Y,C)IDM018B21S



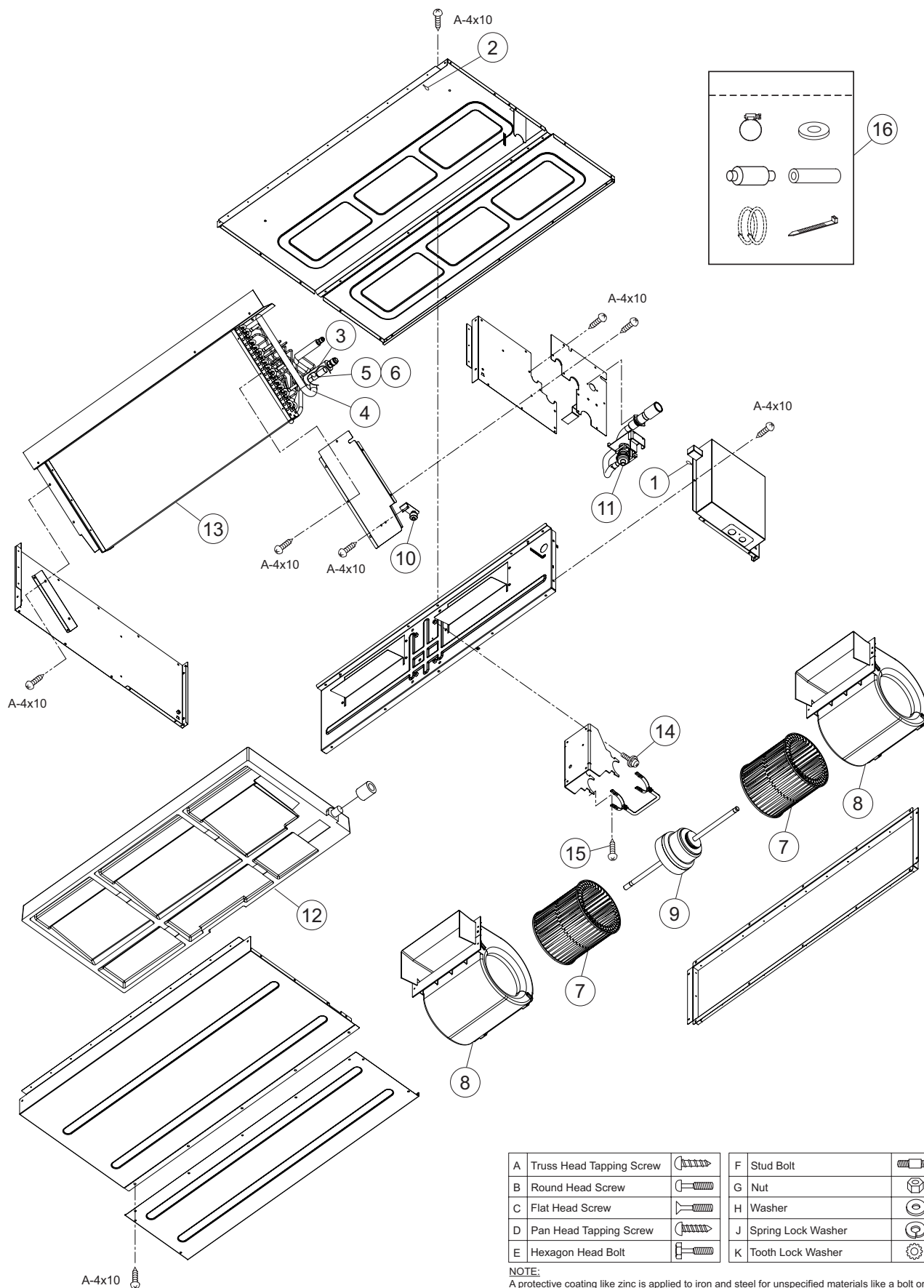
NOTE:
The parts without order number are the custom-ordered, and these are not mentioned in the price list. When ordering them, the part name and the drawing number are required.
Contact your distributor for the delivery date and price of parts.

A	Truss Head Tapping Screw		F	Stud Bolt	
B	Round Head Screw		G	Nut	
C	Flat Head Screw		H	Washer	
D	Pan Head Tapping Screw		J	Spring Lock Washer	
E	Hexagon Head Bolt		K	Tooth Lock Washer	

NOTE:
A protective coating like zinc is applied to iron and steel for unspecified materials like a bolt or screw.

LOCATION OF SERVICE PARTS IN THE UNIT for Ducted Medium Static

MODEL: (H,Y,C)IDM024B21S
(H,Y,C)IDM030B21S



A	Truss Head Tapping Screw		F	Stud Bolt	
B	Round Head Screw		G	Nut	
C	Flat Head Screw		H	Washer	
D	Pan Head Tapping Screw		J	Spring Lock Washer	
E	Hexagon Head Bolt		K	Tooth Lock Washer	

NOTE:

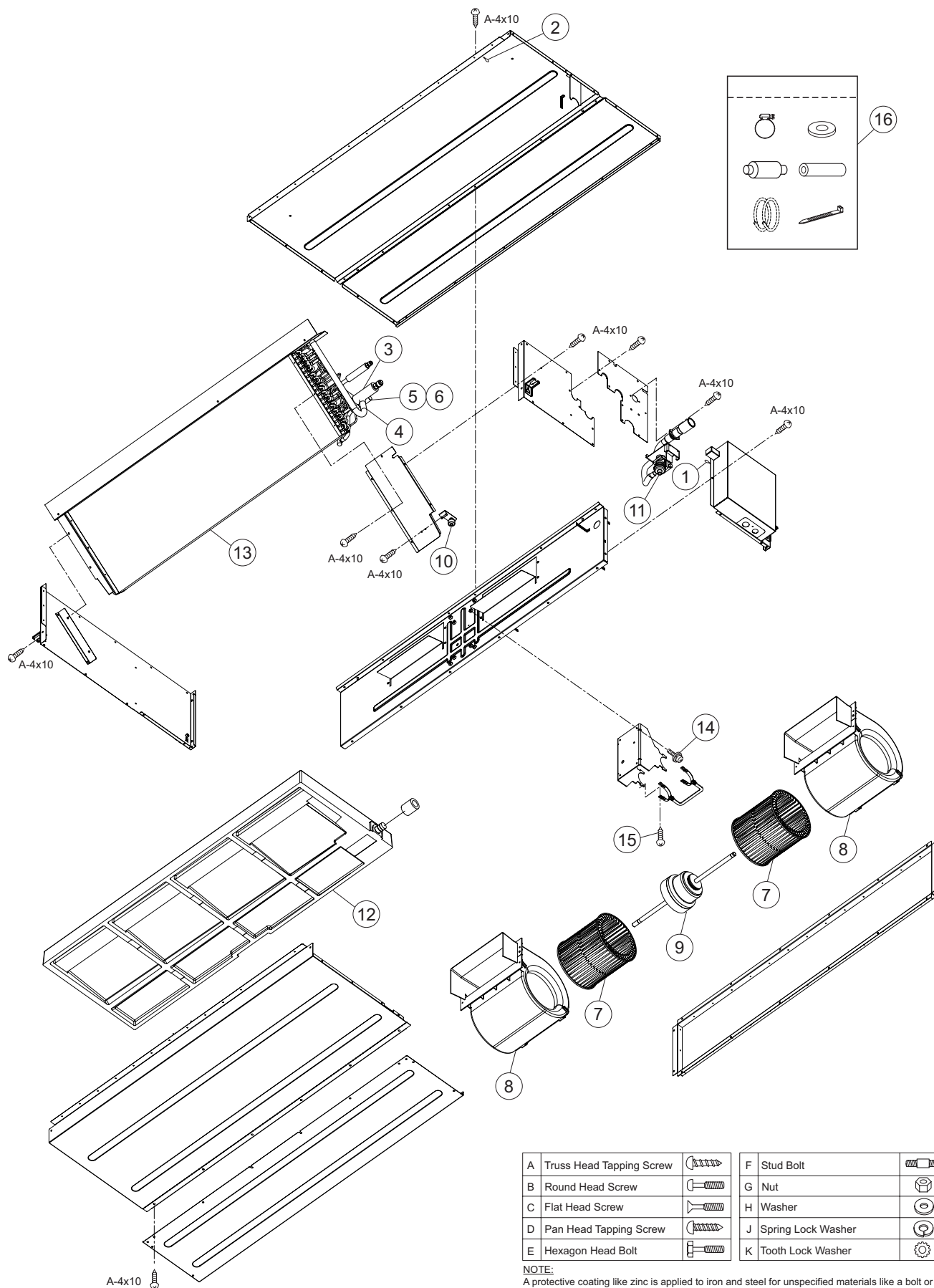
A protective coating like zinc is applied to iron and steel for unspecified materials like a bolt or screw.

NOTE:

The parts without order number are the custom-ordered, and these are not mentioned in the price list. When ordering them, the part name and the drawing number are required.
Contact your distributor for the delivery date and price of parts.

LOCATION OF SERVICE PARTS IN THE UNIT for Ducted Medium Static

MODEL: (H,Y,C)IDM036B21S
(H,Y,C)IDM048B21S



NOTE:

The parts without order number are the custom-ordered, and these are not mentioned in the price list. When ordering them, the part name and the drawing number are required.
Contact your distributor for the delivery date and price of parts.

MODEL: (H,Y,C)IDM006B21S, (H,Y,C)IDM008B21S, (H,Y,C)IDM012B21S,
(H,Y,C)IDM015B21S, (H,Y,C)IDM018B21S, (H,Y,C)IDM024B21S,
(H,Y,C)IDM030B21S, (H,Y,C)IDM036B21S, (H,Y,C)IDM048B21S

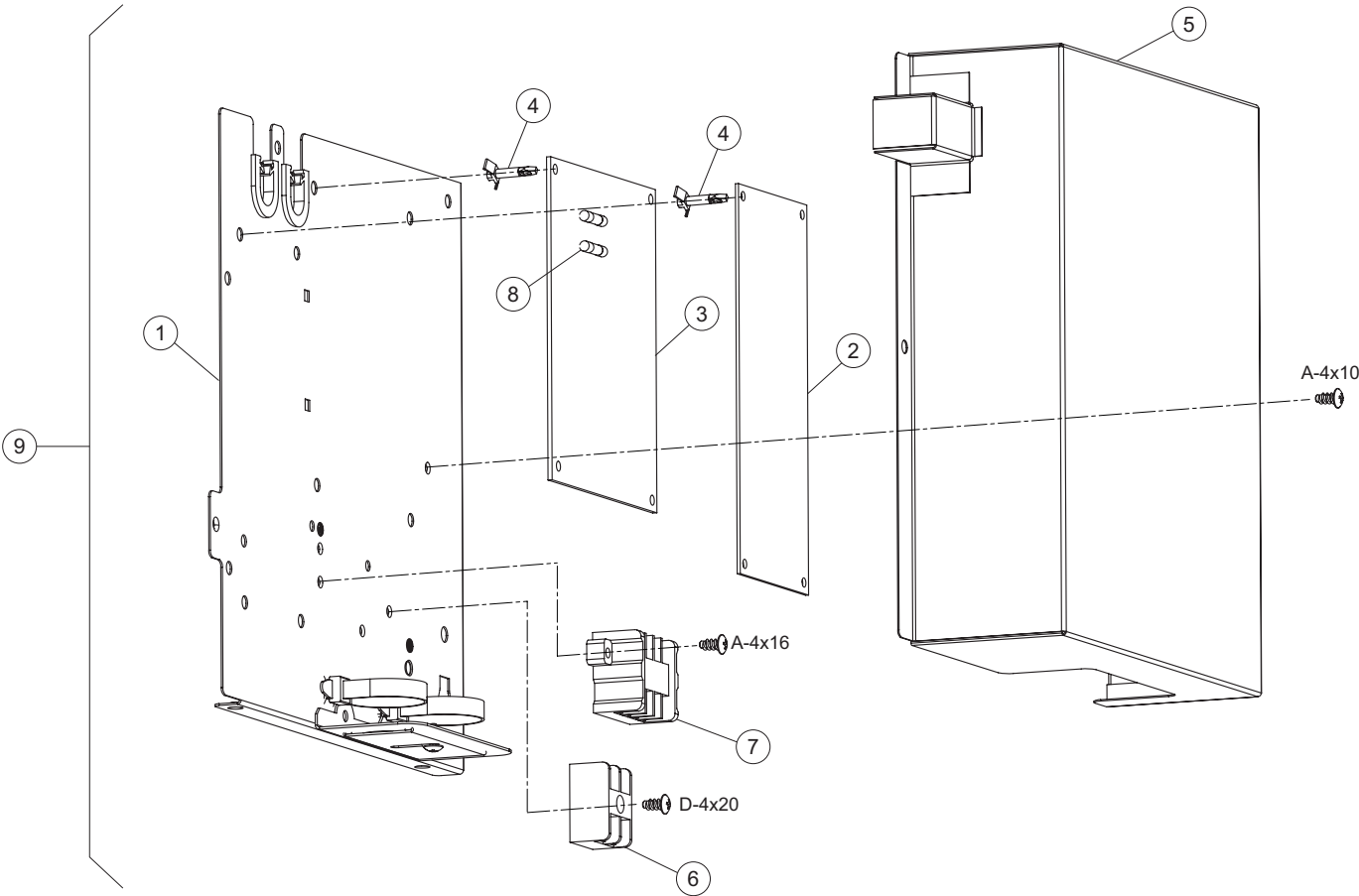
NOTE:

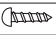

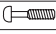

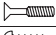





© 2018 Hitachi-Johnson Controls Air-Conditioning, Inc.

LOCATION OF SERVICE PARTS IN THE UNIT for Ducted Medium Static

MODEL: (H,Y,C)IDM006B21S
(H,Y,C)IDM008B21S
(H,Y,C)IDM012B21S
(H,Y,C)IDM015B21S
(H,Y,C)IDM018B21S

< Electrical Box >



A	Truss Head Tapping Screw		F	Stud Bolt	
B	Round Head Screw		G	Nut	
C	Flat Head Screw		H	Washer	
D	Pan Head Tapping Screw		J	Spring Lock Washer	
E	Hexagon Head Bolt		K	Tooth Lock Washer	

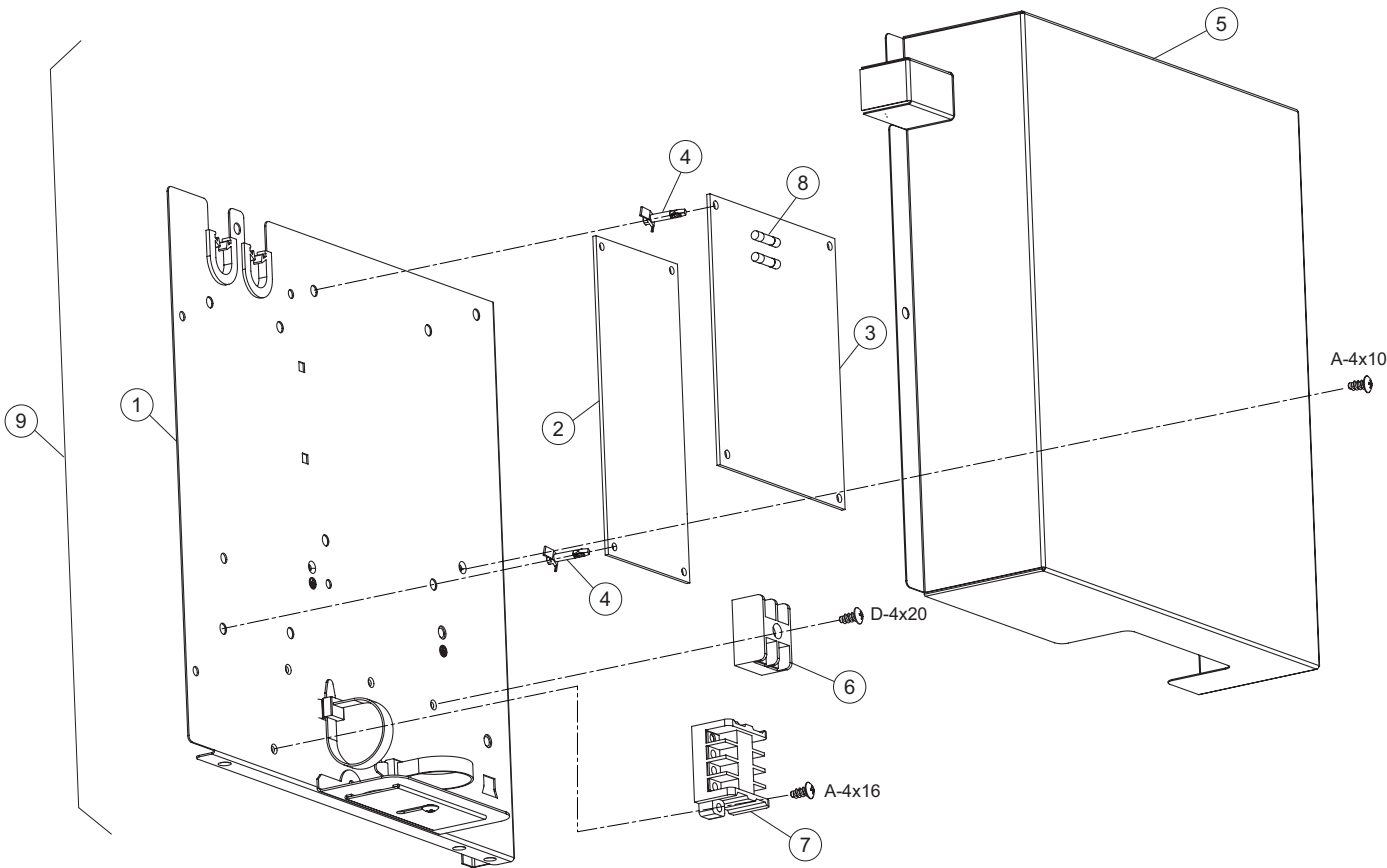
NOTE:
A protective coating like zinc is applied to iron and steel for unspecified materials like a bolt or screw.

NOTE:
The parts without order number are the custom-ordered, and these are not mentioned in the price list. When ordering them, the part name and the drawing number are required.
Contact your distributor for the delivery date and price of parts.

LOCATION OF SERVICE PARTS IN THE UNIT for Ducted Medium Static

MODEL: (H,Y,C)IDM024B21S
(H,Y,C)IDM030B21S
(H,Y,C)IDM036B21S
(H,Y,C)IDM048B21S

< Electrical Box >



A	Truss Head Tapping Screw		F	Stud Bolt	
B	Round Head Screw		G	Nut	
C	Flat Head Screw		H	Washer	
D	Pan Head Tapping Screw		J	Spring Lock Washer	
E	Hexagon Head Bolt		K	Tooth Lock Washer	

NOTE:
A protective coating like zinc is applied to iron and steel for unspecified materials like a bolt or screw.

NOTE:
The parts without order number are the custom-ordered, and these are not mentioned in the price list. When ordering them, the part name and the drawing number are required.
Contact your distributor for the delivery date and price of parts.

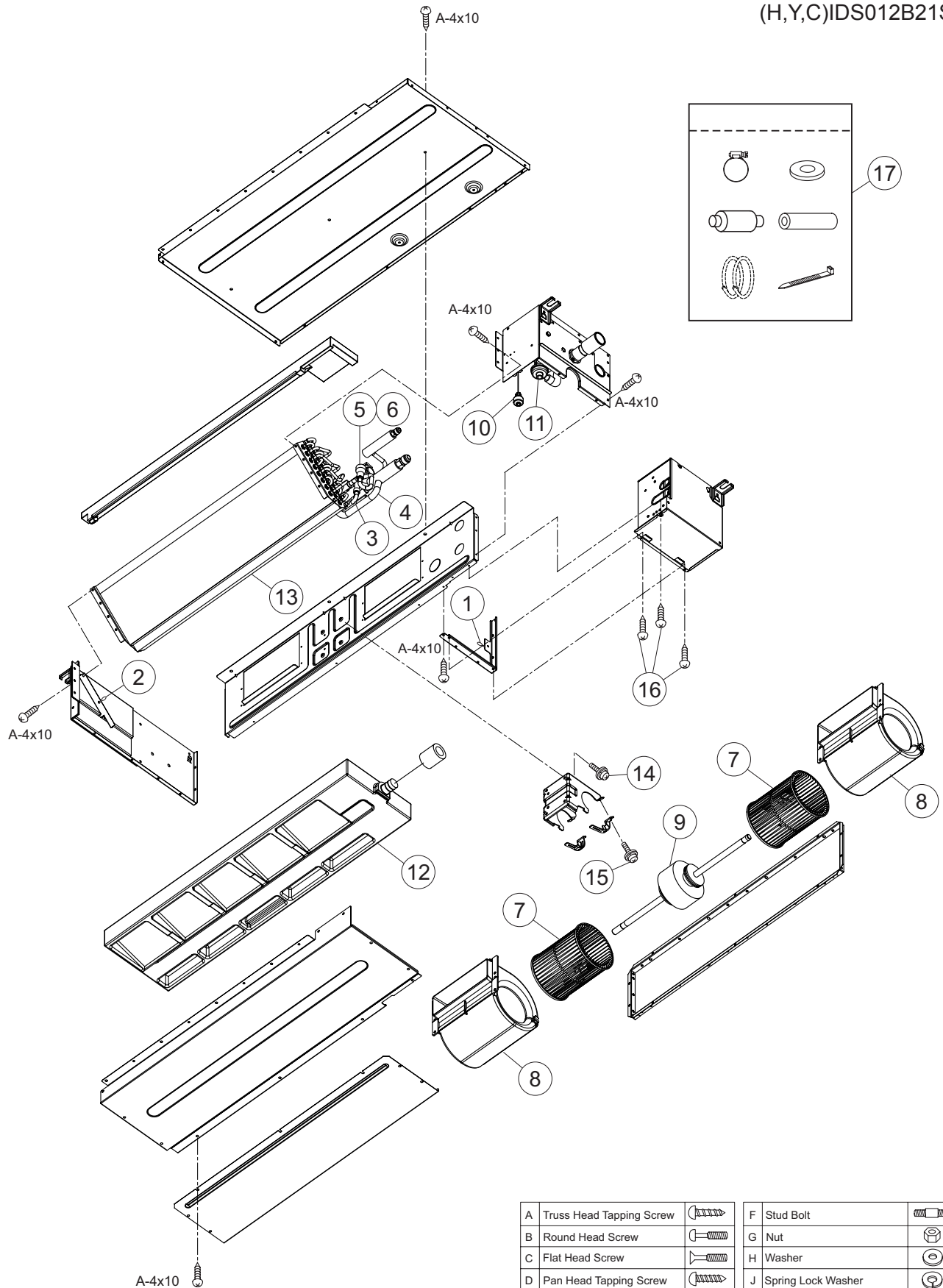
MODEL: (H,Y,C)IDS006B21S, (H,Y,C)IDS008B21S, (H,Y,C)IDS012B21S

NOTE:

© 2018 Hitachi-Johnson Controls Air-Conditioning, Inc.

LOCATION OF SERVICE PARTS IN THE UNIT for Ducted Slim

MODEL: (H,Y,C)IDS006B21S
(H,Y,C)IDS008B21S
(H,Y,C)IDS012B21S



A	Truss Head Tapping Screw		F	Stud Bolt	
B	Round Head Screw		G	Nut	
C	Flat Head Screw		H	Washer	
D	Pan Head Tapping Screw		J	Spring Lock Washer	
E	Hexagon Head Bolt		K	Tooth Lock Washer	

NOTE:

A protective coating like zinc is applied to iron and steel for unspecified materials like a bolt or screw.

NOTE:

The parts without order number are the custom-ordered, and these are not mentioned in the price list. When ordering them, the part name and the drawing number are required.

Contact your distributor for the delivery date and price of parts.

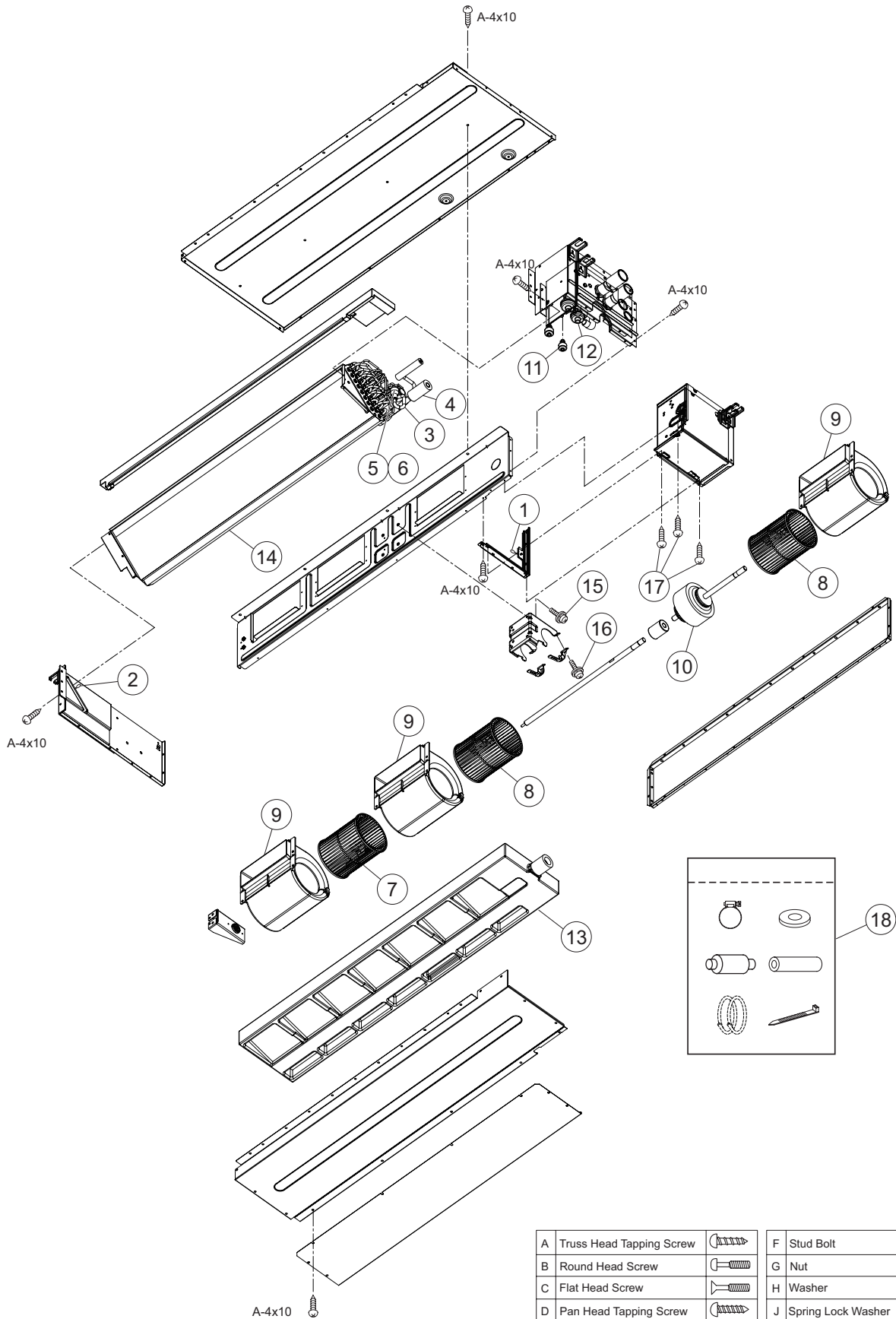
MODEL: (H,Y,C)IDS015B21S, (H,Y,C)IDS018B21S

NOTE:


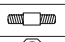
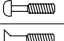

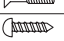
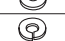


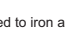
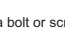
Contact your distributor for the delivery date and price of parts.

LOCATION OF SERVICE PARTS IN THE UNIT for Ducted Slim

MODEL: (H,Y,C)IDS015B21S
(H,Y,C)IDS018B21S



NOTE:
The parts without order number are the custom-ordered, and these are not mentioned in the price list. When ordering them, the part name and the drawing number are required.
Contact your distributor for the delivery date and price of parts.

A	Truss Head Tapping Screw		F	Stud Bolt	
B	Round Head Screw		G	Nut	
C	Flat Head Screw		H	Washer	
D	Pan Head Tapping Screw		J	Spring Lock Washer	
E	Hexagon Head Bolt		K	Tooth Lock Washer	

NOTE:
A protective coating like zinc is applied to iron and steel for unspecified materials like a bolt or screw.

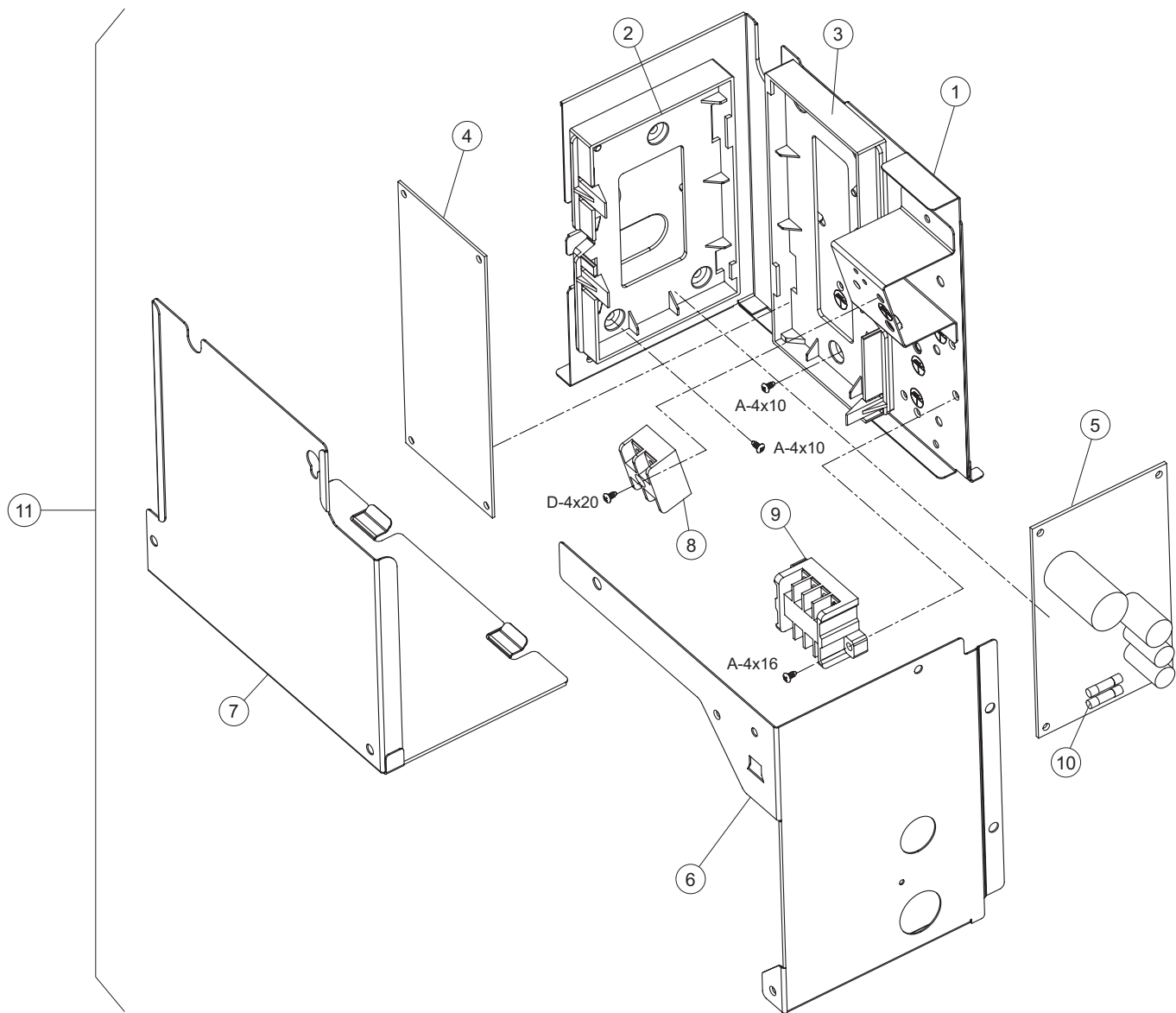
MODEL: (H,Y,C)IDS006B21S, (H,Y,C)IDS008B21S, (H,Y,C)IDS012B21S,
(H,Y,C)IDS015B21S, (H,Y,C)IDS018B21S

SPN201507-R2

LOCATION OF SERVICE PARTS IN THE UNIT for Ducted Slim

MODEL: (H,Y,C)IDS006B21S
(H,Y,C)IDS008B21S
(H,Y,C)IDS012B21S
(H,Y,C)IDS015B21S
(H,Y,C)IDS018B21S

< Electrical Box >



A	Truss Head Tapping Screw		F	Stud Bolt	
B	Round Head Screw		G	Nut	
C	Flat Head Screw		H	Washer	
D	Pan Head Tapping Screw		J	Spring Lock Washer	
E	Hexagon Head Bolt		K	Tooth Lock Washer	

NOTE:
A protective coating like zinc is applied to iron and steel for unspecified materials like a bolt or screw.

NOTE:
The parts without order number are the custom-ordered, and these are not mentioned in the price list. When ordering them, the part name and the drawing number are required.
Contact your distributor for the delivery date and price of parts.