

SERVICE PARTS LIST for Ducted High Static

MODEL: (H,Y,C)IDH015B22S, (H,Y,C)IDH018B22S, (H,Y,C)IDH024B22S,
(H,Y,C)IDH027B22S, (H,Y,C)IDH030B22S, (H,Y,C)IDH036B22S,
(H,Y,C)IDH048B22S, (H,Y,C)IDH054B22S

(P0176x-01)

					Voltage					
					1φ 208/230V 60Hz					
No.	Part Name	Replacement Part		Remarks	Q'ty Per Unit					
		Draw. No.	Order No.		(H,Y,C)IDH015B22S	(H,Y,C)IDH018B22S	(H,Y,C)IDH024B22S (H,Y,C)IDH027B22S	(H,Y,C)IDH030B22S	(H,Y,C)IDH036B22S	(H,Y,C)IDH048B22S (H,Y,C)IDH054B22S
1	Antibacterial Agent Assy	17E26752A	P30499		1	1	1	1	1	1
2	Heat Exchanger Assy	17F21153A	P31246	with No.2-1 Expansion Valve x 1, No.2-2 EXPV. Coil x 1, No.2-3 Flare Nut x 1, No.2-4, 2-5 and 2-6 Thermistor x 1 each	1					
		17F21153C	P31248			1				
		17F21153D	P31249				1			
		17F21153E	P31250					1		
		17F21153F	P31251						1	1
2-1	Expansion Valve	17F04391A	P28701		1					
		17F04392A	P28702			1	1	1		
		17F04393A	P28703						1	1
2-2	EXPV. Coil	17F04390H	P29758		1	1	1	1	1	1
2-3	Flare Nut	17E20872C	R4226	φ1/2 inch (φ12.7mm) (with hole)	1	1	1	1	1	1
2-4	Thermistor	17B24598J	P22668	for Air Outlet, THM2	1	1	1	1	1	1
2-5	Thermistor	17B42636A	P28902	for Freeze Protection, THM3	1	1	1	1	1	1
2-6	Thermistor	17B42635C	P29020	for Gas Pipe, THM5	1	1	1	1	1	1
3	Pipe Cover Assy	17H30073A	-		1	1	1	1	1	1
4	Drain-up Mechanism Assy	17H30074A	P31079	with No.4-1 Drain-up Mechanism Cover Assy x 1, No.4-2 Drain-up Mechanism x 1, No.4-3 Float Switch Assy x 1, No.4-4 Cap x 1	1	1	1	1	1	1
4-1	Drain-up Mechanism Cover Assy	17H30075A	-		1	1	1	1	1	1
4-2	Drain-up Mechanism	17H17342A	P29235		1	1	1	1	1	1
4-3	Float Switch Assy	17H30076A	P31080		1	1	1	1	1	1
4-4	Cap	17E26991A	P31081		1	1	1	1	1	1
5	Condensate Hose Assy	17F19182A	P31082		1	1	1	1	1	1
6	Electrical Box Cover 1 Assy	17H34168B	-	with Labels (Electrical Wiring Diagram and Cautionary Markings), No.6-1 Sealing Cover x 1, No.6-2 Electrical Box Cover 1 x 1	1	1	1	1	1	1
6-1	Sealing Cover	17E27219A	-		1	1	1	1	1	1
6-2	Electrical Box Cover 1	17H30734A	-		1	1	1	1	1	1
7	Electrical Box Cover 2	17H31870A	-		1	1	1	1	1	1
8	Condensate Pan Assy	17B47731A	P31083	with No.8-1 Rubber Cap x 1	1					
		17B47731B	P31084			1	1			
		17B47731C	P31085					1	1	1
8-1	Rubber Cap	17D49135A	P21562		1	1	1	1	1	1
9	Frame F Assy	17H30275A	-		1					
		17H30275B	-			1	1			
		17H30275C	-					1	1	1
10	Frame B	17F18575C	-		1					
		17F18575B	-			1	1			
		17F18575A	-					1	1	1
11	MB Frame Assy	17H31368A	-		1	1	1	1	1	1
12	Frame M	17F18574C	-		1					
		17F18574B	-			1	1			
		17F18574A	-					1	1	1
13	Bottom Cover F Assy	17H30821A	-		1					
		17H30821B	-			1	1			
		17H30821C	-					1	1	1
14	Bottom Cover B	17F21114C	-		1					
		17F21114B	-			1	1			
		17F21114A	-					1	1	1
15	Service Cover	17H30667A	-		1	1	1	1	1	1
16	Duct Flange for Air Outlet	17F19189A	-		1					
		17F19189B	-			1	1			
		17F19189C	-					1	1	1

NOTE:

The parts without order number are the custom-ordered, and these are not mentioned in the price list. When ordering them, the part name and the drawing number are required.

Contact your distributor for the delivery date and price of parts.

MODEL: (H,Y,C)IDH015B22S, (H,Y,C)IDH018B22S, (H,Y,C)IDH024B22S,
(H,Y,C)IDH027B22S, (H,Y,C)IDH030B22S, (H,Y,C)IDH036B22S,
(H,Y,C)IDH048B22S, (H,Y,C)IDH054B22S

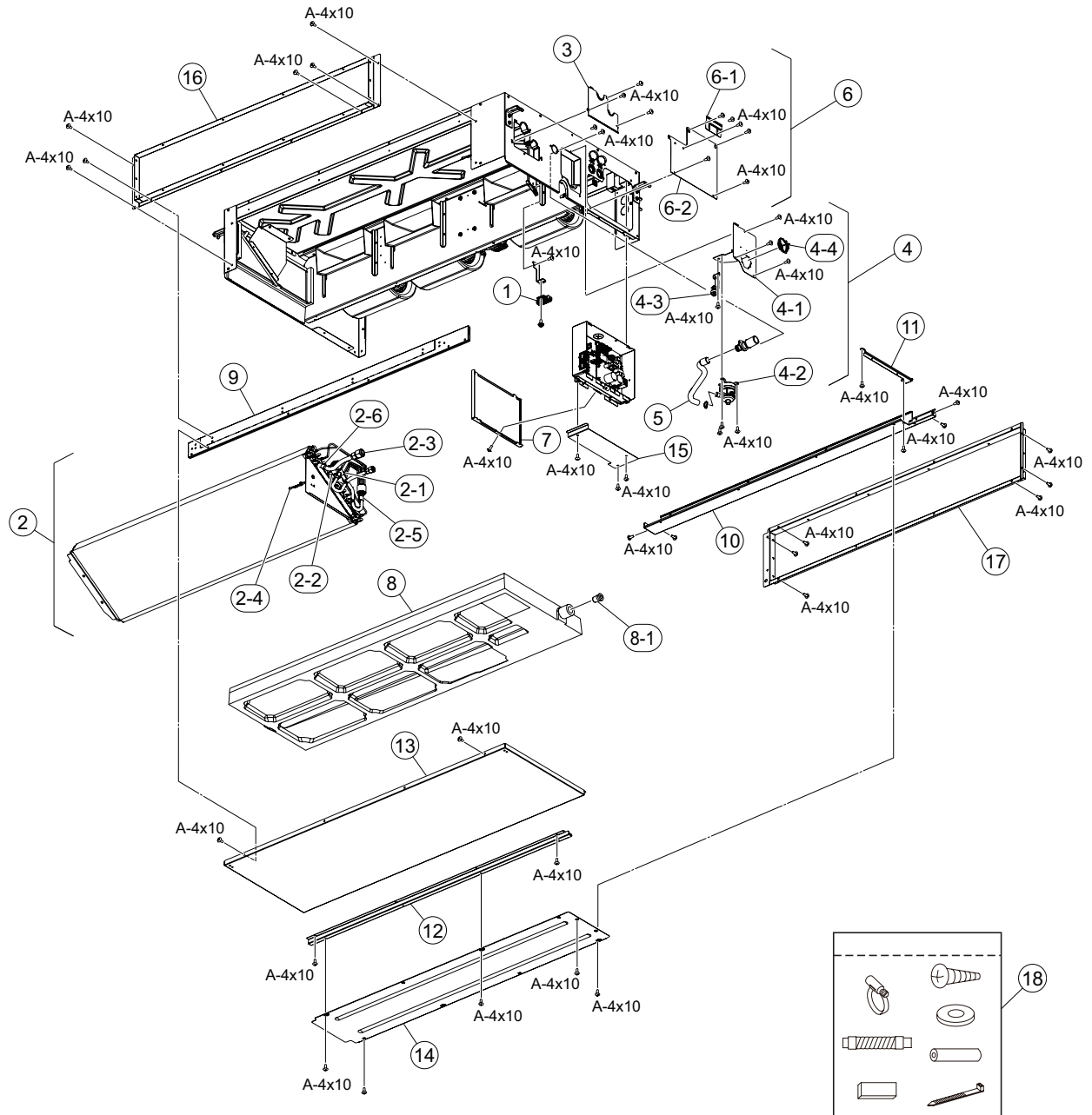
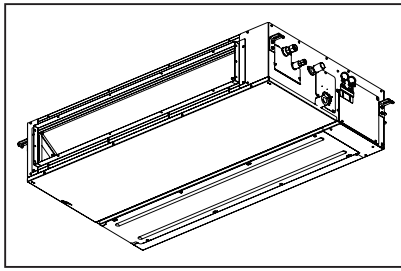
Voltage

[illegible]

SPN201707

LOCATION OF SERVICE PARTS IN THE UNIT for Ducted High Static

MODEL: (H,Y,C)IDH015B22S
 (H,Y,C)IDH018B22S
 (H,Y,C)IDH024B22S
 (H,Y,C)IDH027B22S
 (H,Y,C)IDH030B22S
 (H,Y,C)IDH036B22S
 (H,Y,C)IDH048B22S
 (H,Y,C)IDH054B22S



A	Truss Head Tapping Screw		F	Stud Bolt	
B	Round Head Screw		G	Nut	
C	Flat Head Screw		H	Washer	
D	Pan Head Tapping Screw		J	Spring Lock Washer	
E	Hexagon Head Bolt		K	Tooth Lock Washer	

NOTE:
 A protective coating like zinc is applied to iron and steel for unspecified materials like a bolt or screw.

NOTE:

The parts without order number are the custom-ordered, and these are not mentioned in the price list. When ordering them, the part name and the drawing number are required.
 Contact your distributor for the delivery date and price of parts.

MODEL: (H,Y,C)IDH015B22S, (H,Y,C)IDH018B22S, (H,Y,C)IDH024B22S,
(H,Y,C)IDH027B22S, (H,Y,C)IDH030B22S, (H,Y,C)IDH036B22S,
(H,Y,C)IDH048B22S, (H,Y,C)IDH054B22S

Voltage

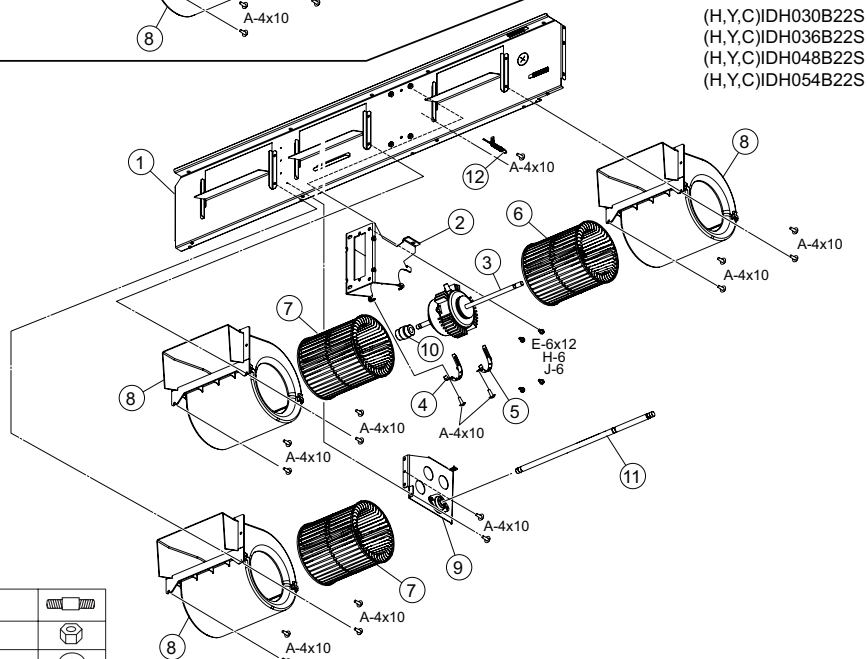
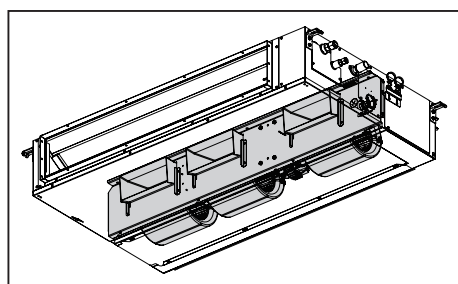
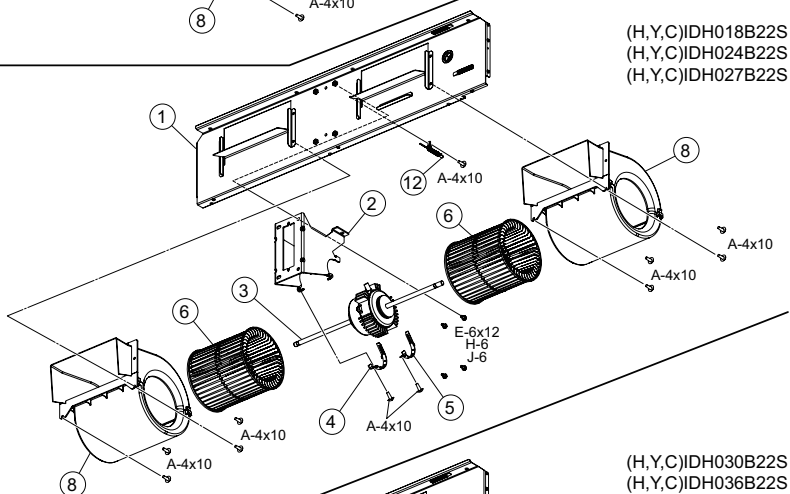
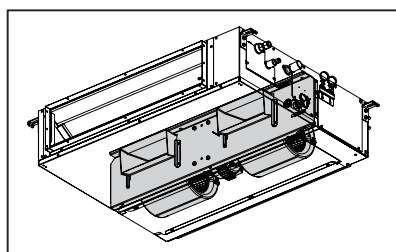
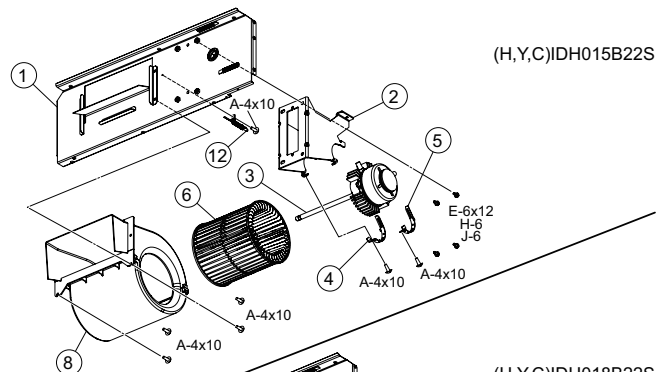
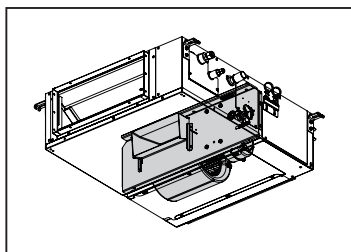
[illegible]

SPN201707

LOCATION OF SERVICE PARTS IN THE UNIT for Ducted High Static

MODEL: (H,Y,C)IDH015B22S
 (H,Y,C)IDH018B22S
 (H,Y,C)IDH024B22S
 (H,Y,C)IDH027B22S
 (H,Y,C)IDH030B22S
 (H,Y,C)IDH036B22S
 (H,Y,C)IDH048B22S
 (H,Y,C)IDH054B22S

< Fan >



A	Truss Head Tapping Screw		F	Stud Bolt	
B	Round Head Screw		G	Nut	
C	Flat Head Screw		H	Washer	
D	Pan Head Tapping Screw		J	Spring Lock Washer	
E	Hexagon Head Bolt		K	Tooth Lock Washer	

NOTE:
 A protective coating like zinc is applied to iron and steel for unspecified materials like a bolt or screw.

NOTE:

The parts without order number are the custom-ordered, and these are not mentioned in the price list. When ordering them, the part name and the drawing number are required.
 Contact your distributor for the delivery date and price of parts.

MODEL: (H,Y,C)IDH015B22S, (H,Y,C)IDH018B22S, (H,Y,C)IDH024B22S,
(H,Y,C)IDH027B22S, (H,Y,C)IDH030B22S, (H,Y,C)IDH036B22S,
(H,Y,C)IDH048B22S, (H,Y,C)IDH054B22S

Voltage

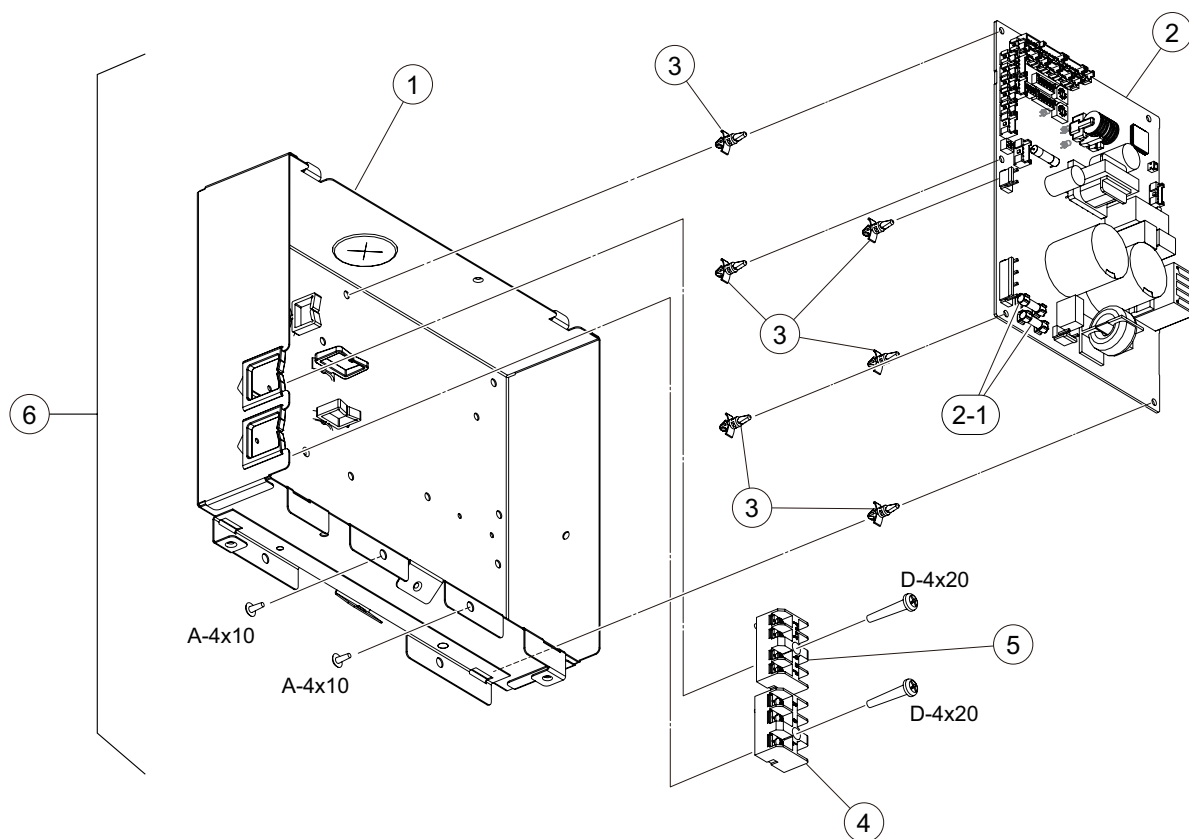
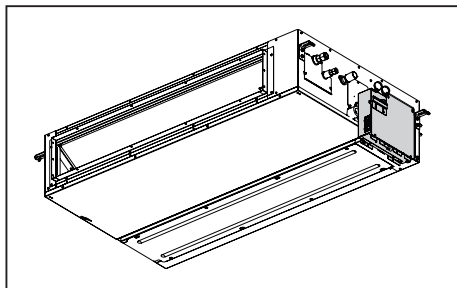
[illegible]

SPN201707

LOCATION OF SERVICE PARTS IN THE UNIT for Ducted High Static

MODEL: (H,Y,C)IDH015B22S
 (H,Y,C)IDH018B22S
 (H,Y,C)IDH024B22S
 (H,Y,C)IDH027B22S
 (H,Y,C)IDH030B22S
 (H,Y,C)IDH036B22S
 (H,Y,C)IDH048B22S
 (H,Y,C)IDH054B22S

< Electrical Parts >



A	Truss Head Tapping Screw		F	Stud Bolt	
B	Round Head Screw		G	Nut	
C	Flat Head Screw		H	Washer	
D	Pan Head Tapping Screw		J	Spring Lock Washer	
E	Hexagon Head Bolt		K	Tooth Lock Washer	

NOTE:

A protective coating like zinc is applied to iron and steel for unspecified materials like a bolt or screw.

NOTE:

The parts without order number are the custom-ordered, and these are not mentioned in the price list. When ordering them, the part name and the drawing number are required.

Contact your distributor for the delivery date and price of parts.

SERVICE PARTS LIST for Ducted Medium Static

MODEL: (H,Y,C)IDM006B22S, (H,Y,C)IDM008B22S, (H,Y,C)IDM012B22S,
(H,Y,C)IDM015B22S, (H,Y,C)IDM018B22S, (H,Y,C)IDM024B22S,
(H,Y,C)IDM027B22S, (H,Y,C)IDM030B22S, (H,Y,C)IDM036B22S,
(H,Y,C)IDM048B22S, (H,Y,C)IDM054B22S

(P0176x-04)

Voltage

1φ 208/230V 60Hz

No.	Part Name	Replacement Part		Remarks	Q'ty Per Unit											
		Draw. No.	Order No.		(H,Y,C)IDM006B22S	(H,Y,C)IDM008B22S	(H,Y,C)IDM012B22S	(H,Y,C)IDM015B22S	(H,Y,C)IDM018B22S	(H,Y,C)IDM024B22S (H,Y,C)IDM027B22S	(H,Y,C)IDM030B22S	(H,Y,C)IDM036B22S	(H,Y,C)IDM048B22S (H,Y,C)IDM054B22S			
1	Antibacterial Agent Assy	17E26752A	P30499		1	1	1	1	1	1	1	1	1	1		
2	Heat Exchanger Assy	17F21154A	P31252	with No.2-1 Expansion Valve x 1, No.2-2 EXPV. Coil x 1, No.2-3 Flare Nut x 1, No.2-4, 2-5 and 2-6 Thermistor x 1 each	1	1										
		17F21154B	P31253				1	1								
		17F21154D	P31255						1							
		17F21154E	P31256							1						
		17F21154F	P31257									1				
		17F21154G	P31258										1	1		
2-1	Expansion Valve	17F04391A	P28701		1	1	1	1								
		17F04392A	P28702						1	1	1					
		17F04393A	P28703										1	1		
2-2	EXPV. Coil	17F04390H	P29758		1	1	1	1	1	1	1	1	1	1		
2-3	Flare Nut	17E20872C	R4226	φ1/2 inch (φ12.7mm) (with hole)	1	1	1	1								
		17E20872D	R4227	φ5/8 inch (φ15.88mm) (with hole)					1	1	1	1	1	1		
2-4	Thermistor	17B24598J	P22668	for Air Outlet, THM2	1	1										
		17B24544F	P31243				1	1	1	1	1	1	1			
2-5	Thermistor	17B42636C	P29764	for Freeze Protection, THM3	1	1										
		17B42636A	P28902				1	1	1	1	1	1	1			
2-6	Thermistor	17B42635F	P30052	for Gas Pipe, THM5	1	1										
		17B42635C	P29020				1	1	1	1	1	1	1			
3	Pipe Cover Assy	17H30073A	-		1	1	1	1	1	1	1	1	1	1		
4	Drain-up Mechanism Assy	17H30074A	P31079	with No.4-1 Drain-up Mechanism Cover Assy x 1, No.4-2 Drain-up Mechanism x 1, No.4-3 Float Switch Assy x 1, No.4-4 Cap x 1	1	1	1	1	1	1	1	1	1	1		
4-1	Drain-up Mechanism Cover Assy	17H30075A	-		1	1	1	1	1	1	1	1	1	1		
4-2	Drain-up Mechanism	17H17342A	P29235		1	1	1	1	1	1	1	1	1	1		
4-3	Float Switch Assy	17H30076A	P31080		1	1	1	1	1	1	1	1	1	1		
4-4	Cap	17E26991A	P31081		1	1	1	1	1	1	1	1	1	1		
5	Condensate Hose Assy	17F19182A	P31082		1	1	1	1	1	1	1	1	1	1		
6	Electrical Box Cover 1 Assy	17H34168B	-	with Labels (Electrical Wiring Diagram and Cautionary Markings), No.6-1 Sealing Cover x 1, No.6-2 Electrical Box Cover 1 x 1	1	1	1	1	1	1	1	1	1	1		
6-1	Sealing Cover	17E27219A	-		1	1	1	1	1	1	1	1	1	1		
6-2	Electrical Box Cover 1	17H30734A	-		1	1	1	1	1	1	1	1	1	1		
7	Electrical Box Cover 2	17H31870A	-		1	1	1	1	1	1	1	1	1	1		
8	Condensate Pan Assy	17B47731A	P31083	with No.8-1 Rubber Cap x 1	1	1	1	1								
		17B47731B	P31084						1	1						
		17B47731C	P31085								1	1	1			
8-1	Rubber Cap	17D49135A	P21562		1	1	1	1	1	1	1	1	1	1		
9	Frame F Assy	17H30275A	-		1	1	1	1								
		17H30275B	-						1	1						
		17H30275C	-								1	1	1			
10	Frame B	17F18575C	-		1	1	1	1								
		17F18575B	-						1	1						
		17F18575A	-									1	1	1		
11	MB Frame Assy	17H31368A	-		1	1	1	1	1	1	1	1	1	1		
12	Frame M	17F18574C	-		1	1	1	1								
		17F18574B	-						1	1						
		17F18574A	-									1	1	1		
13	Bottom Cover F Assy	17H30821A	-		1	1	1	1								
		17H30821B	-						1	1						
		17H30821C	-									1	1	1		

NOTE:

The parts without order number are the custom-ordered, and these are not mentioned in the price list. When ordering them, the part name and the drawing number are required.

Contact your distributor for the delivery date and price of parts.

MODEL: (H,Y,C)IDM006B22S, (H,Y,C)IDM008B22S, (H,Y,C)IDM012B22S,
(H,Y,C)IDM015B22S, (H,Y,C)IDM018B22S, (H,Y,C)IDM024B22S,
(H,Y,C)IDM027B22S, (H,Y,C)IDM030B22S, (H,Y,C)IDM036B22S,
(H,Y,C)IDM048B22S, (H,Y,C)IDM054B22S

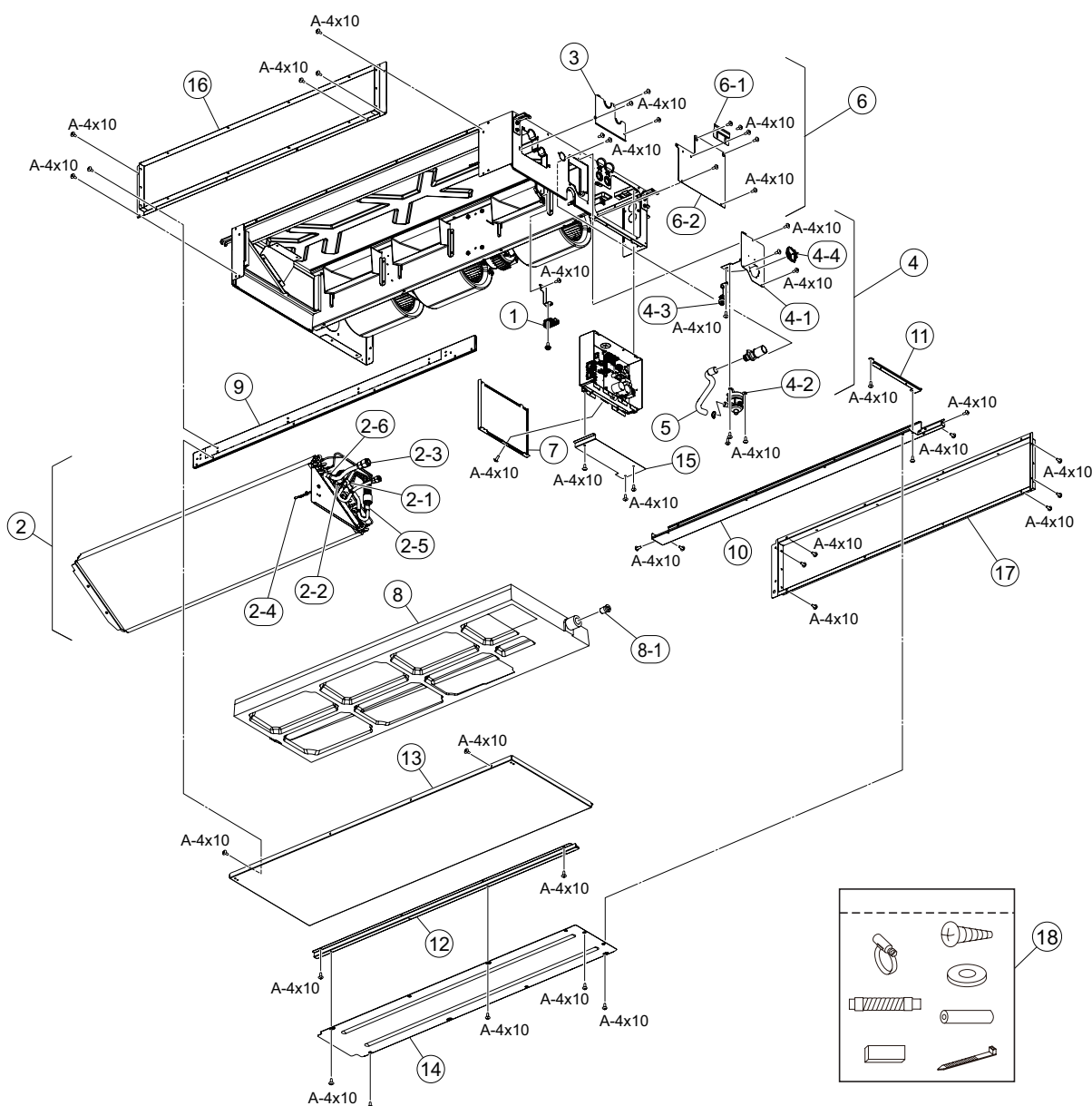
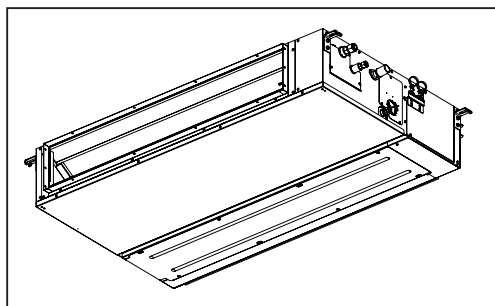
Voltage

1 ϕ 208/230V 60Hz

SPN201707

LOCATION OF SERVICE PARTS IN THE UNIT for Ducted Medium Static

MODEL: (H,Y,C)IDM006B22S
 (H,Y,C)IDM008B22S
 (H,Y,C)IDM012B22S
 (H,Y,C)IDM015B22S
 (H,Y,C)IDM018B22S
 (H,Y,C)IDM024B22S
 (H,Y,C)IDM027B22S
 (H,Y,C)IDM030B22S
 (H,Y,C)IDM036B22S
 (H,Y,C)IDM048B22S
 (H,Y,C)IDM054B22S



A	Truss Head Tapping Screw		F	Stud Bolt	
B	Round Head Screw		G	Nut	
C	Flat Head Screw		H	Washer	
D	Pan Head Tapping Screw		J	Spring Lock Washer	
E	Hexagon Head Bolt		K	Tooth Lock Washer	

NOTE:
 A protective coating like zinc is applied to iron and steel for unspecified materials like a bolt or screw.

NOTE:

The parts without order number are the custom-ordered, and these are not mentioned in the price list. When ordering them, the part name and the drawing number are required.
 Contact your distributor for the delivery date and price of parts.

MODEL: (H,Y,C)IDM006B22S, (H,Y,C)IDM008B22S, (H,Y,C)IDM012B22S,
(H,Y,C)IDM015B22S, (H,Y,C)IDM018B22S, (H,Y,C)IDM024B22S,
(H,Y,C)IDM027B22S, (H,Y,C)IDM030B22S, (H,Y,C)IDM036B22S,
(H,Y,C)IDM048B22S, (H,Y,C)IDM054B22S

Voltage

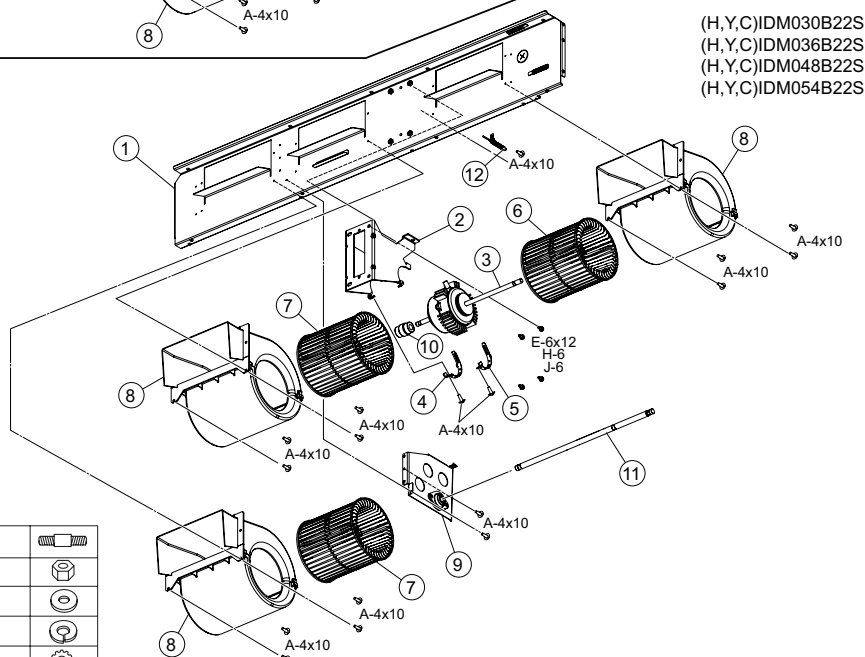
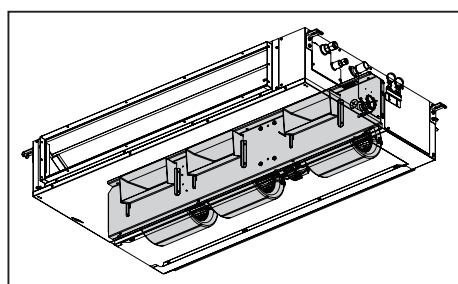
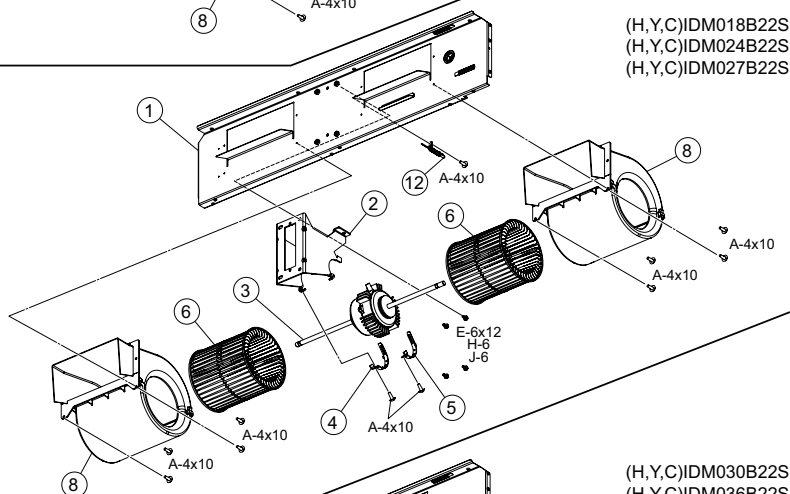
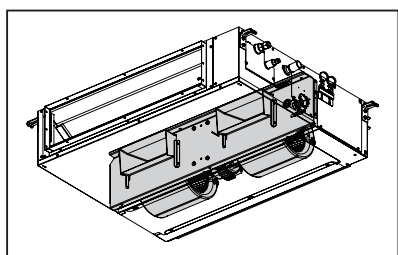
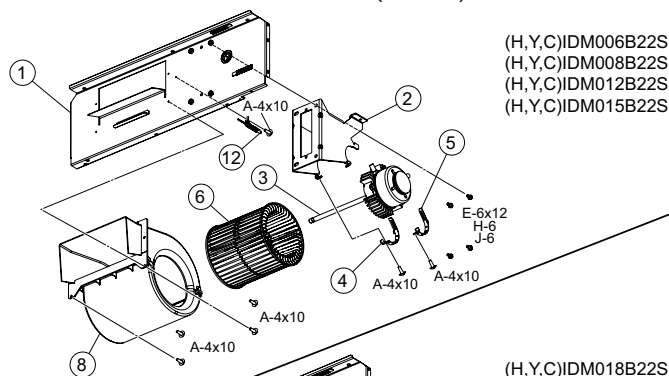
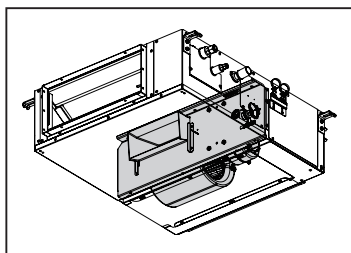
1 ϕ 208/230V 60Hz

The parts without order number are the custom-ordered, and these are not mentioned in the price list. When ordering them, the part name and the drawing number are required.
Contact your distributor for the delivery date and price of parts.

LOCATION OF SERVICE PARTS IN THE UNIT for Ducted Medium Static

MODEL: (H,Y,C)IDM006B22S
 (H,Y,C)IDM008B22S
 (H,Y,C)IDM012B22S
 (H,Y,C)IDM015B22S
 (H,Y,C)IDM018B22S
 (H,Y,C)IDM024B22S
 (H,Y,C)IDM027B22S
 (H,Y,C)IDM030B22S
 (H,Y,C)IDM036B22S
 (H,Y,C)IDM048B22S
 (H,Y,C)IDM054B22S

< Fan >



A	Truss Head Tapping Screw		F	Stud Bolt	
B	Round Head Screw		G	Nut	
C	Flat Head Screw		H	Washer	
D	Pan Head Tapping Screw		J	Spring Lock Washer	
E	Hexagon Head Bolt		K	Tooth Lock Washer	

NOTE:
 A protective coating like zinc is applied to iron and steel for unspecified materials like a bolt or screw.

NOTE:

The parts without order number are the custom-ordered, and these are not mentioned in the price list. When ordering them, the part name and the drawing number are required.
 Contact your distributor for the delivery date and price of parts.

MODEL: (H,Y,C)IDM006B22S, (H,Y,C)IDM008B22S, (H,Y,C)IDM012B22S,
(H,Y,C)IDM015B22S, (H,Y,C)IDM018B22S, (H,Y,C)IDM024B22S,
(H,Y,C)IDM027B22S, (H,Y,C)IDM030B22S, (H,Y,C)IDM036B22S,
(H,Y,C)IDM048B22S, (H,Y,C)IDM054B22S

Voltage

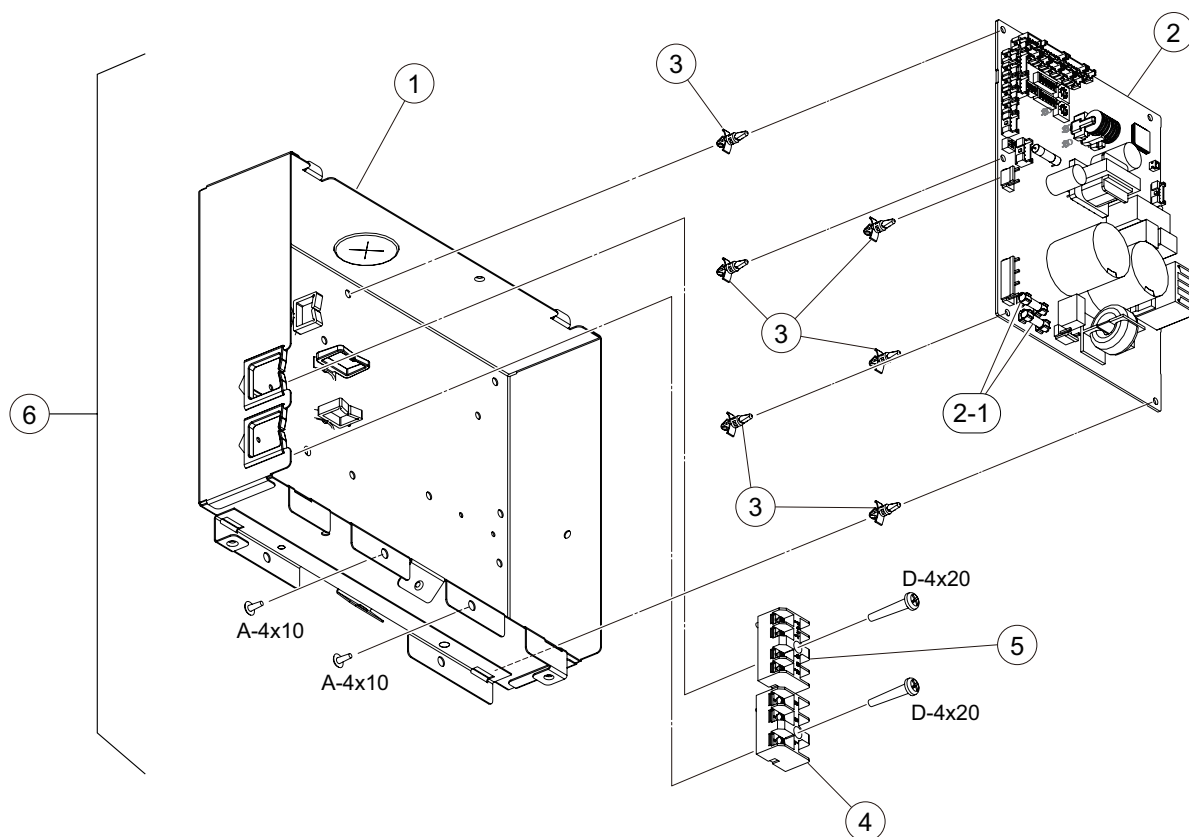
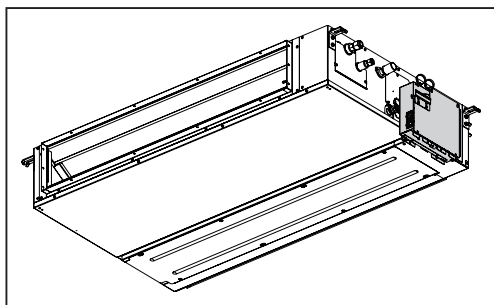
1 ϕ 208/230V 60Hz

SPN201707

LOCATION OF SERVICE PARTS IN THE UNIT for Ducted Medium Static

MODEL: (H,Y,C)IDM006B22S
 (H,Y,C)IDM008B22S
 (H,Y,C)IDM012B22S
 (H,Y,C)IDM015B22S
 (H,Y,C)IDM018B22S
 (H,Y,C)IDM024B22S
 (H,Y,C)IDM027B22S
 (H,Y,C)IDM030B22S
 (H,Y,C)IDM036B22S
 (H,Y,C)IDM048B22S
 (H,Y,C)IDM054B22S

< Electrical Parts >



A	Truss Head Tapping Screw		F	Stud Bolt	
B	Round Head Screw		G	Nut	
C	Flat Head Screw		H	Washer	
D	Pan Head Tapping Screw		J	Spring Lock Washer	
E	Hexagon Head Bolt		K	Tooth Lock Washer	

NOTE:
 A protective coating like zinc is applied to iron and steel for unspecified materials like a bolt or screw.

NOTE:

The parts without order number are the custom-ordered, and these are not mentioned in the price list. When ordering them, the part name and the drawing number are required.
 Contact your distributor for the delivery date and price of parts.