

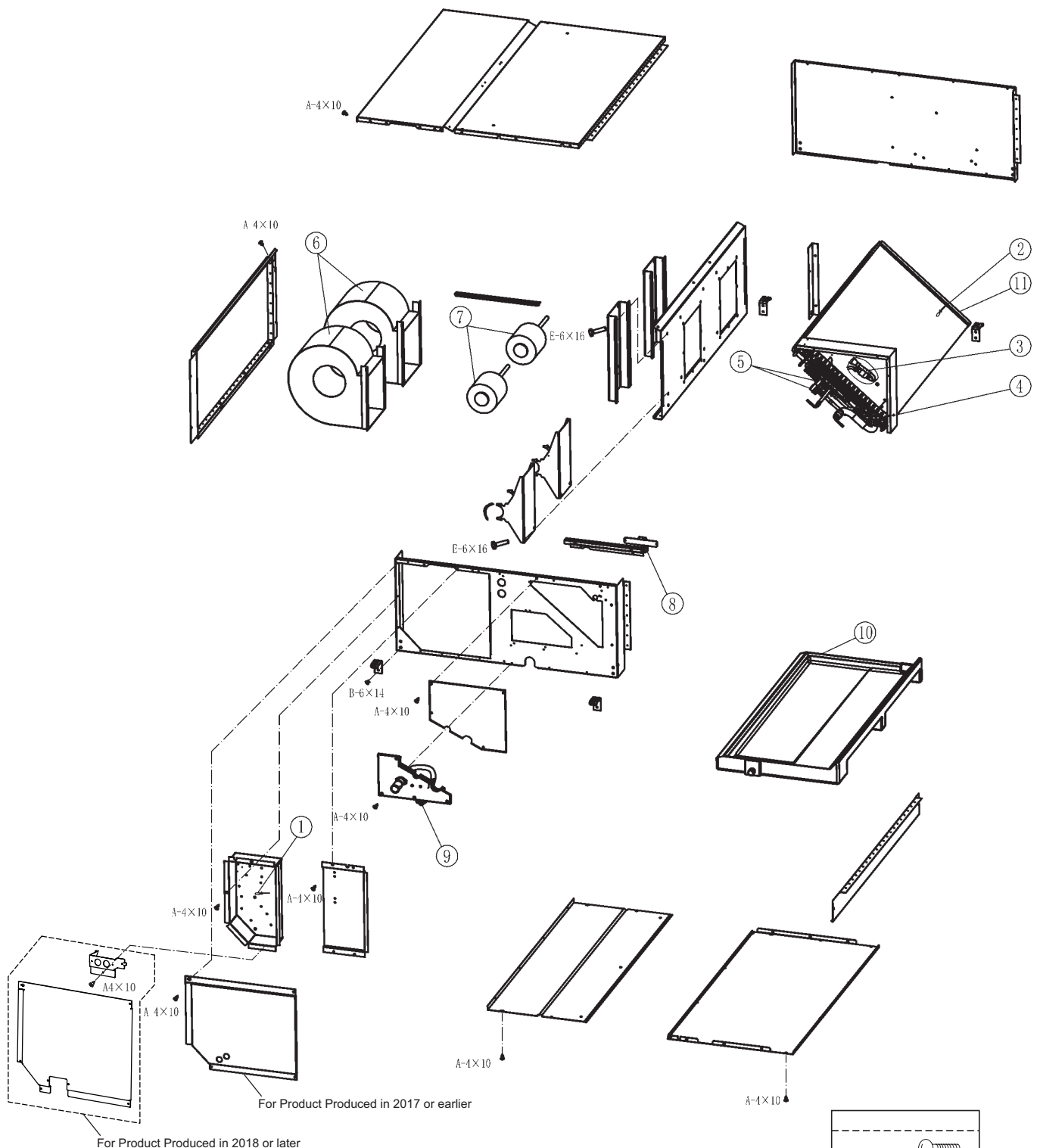
MODEL: (H,Y)IDH072B21S, (H,Y)IDH096B21S











Voltage
1 $\phi$ 208/230V 60Hz

SPN201520-R2

## LOCATION OF SERVICE PARTS IN THE UNIT for Ducted High Static

MODEL: (H,Y)IDH072B21S  
(H,Y)IDH096B21S



A	Truss Head Tapping Screw		F	Stud Bolt	
B	Round Head Screw		G	Nut	
C	Flat Head Screw		H	Washer	
D	Pan Head Tapping Screw		J	Spring Lock Washer	
E	Hexagon Head Bolt		K	Tooth Lock Washer	

NOTE:  
A protective coating like zinc is applied to iron and steel for unspecified materials like a bolt or screw.

NOTE:

**NOTE:** The parts without order number are the custom-ordered, and these are not mentioned in the price list. When ordering them, the part name and the drawing number are required.  
Contact your distributor for the delivery date and price of parts.

MODEL: (H,Y)IDH072B21S, (H,Y)IDH096B21S

Voltage
1 $\phi$ 208/230V 60Hz

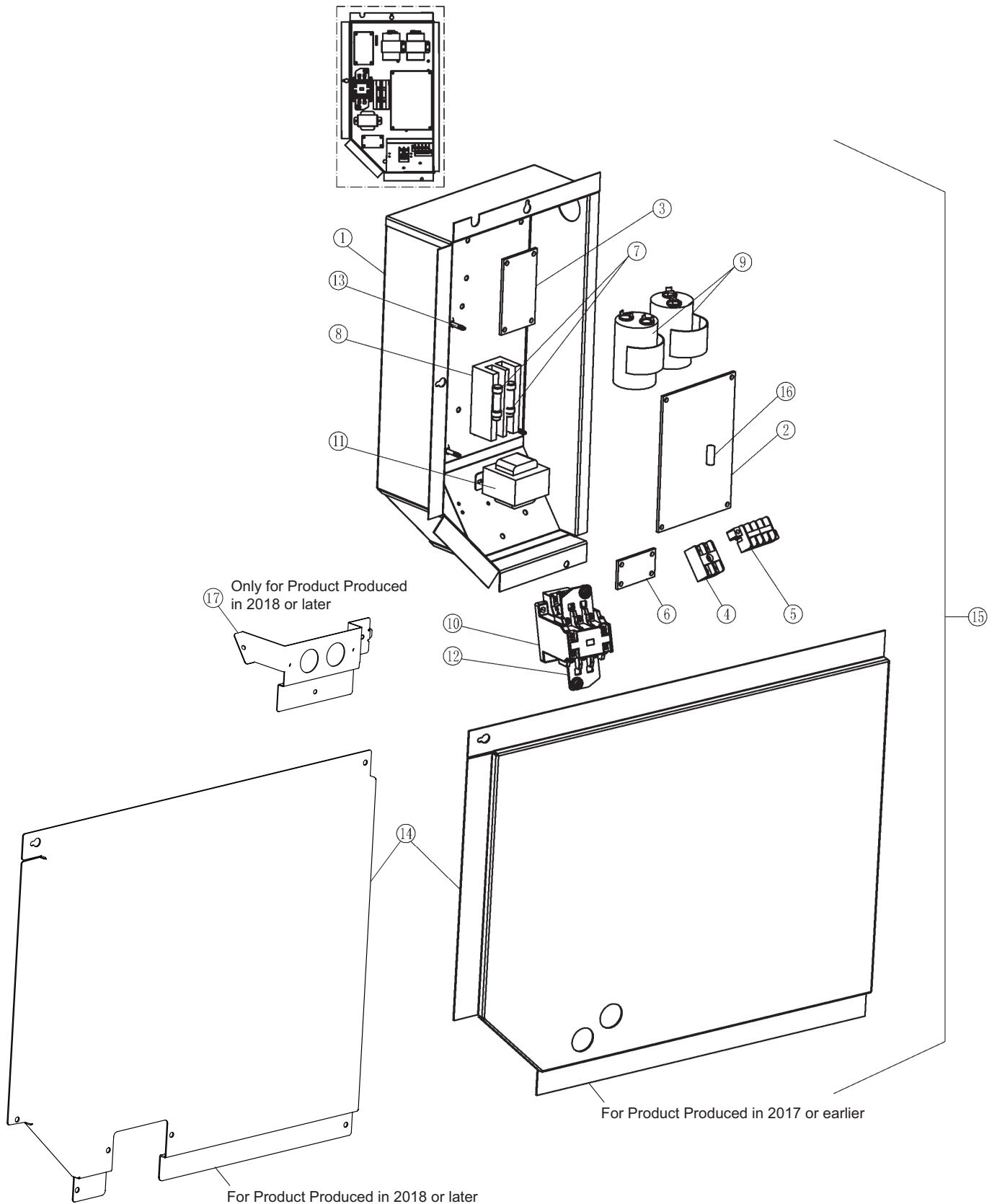
\*: The shape of the electrical box and electrical box cover are different according to the manufacturing year.  
The service parts of the electrical box and electrical box cover change to the service parts for the product produced in 2018 or later.  
Order both service parts of the electrical box and electrical box cover as a set when ordering the service parts of the electrical box or electrical box cover.

## SPN201520-R2

# LOCATION OF SERVICE PARTS IN THE UNIT for Ducted High Static

MODEL: (H,Y)IDH072B21S  
(H,Y)IDH096B21S

## < Electrical Box >



### NOTE:

The parts without order number are the custom-ordered, and these are not mentioned in the price list. When ordering them, the part name and the drawing number are required.  
Contact your distributor for the delivery date and price of parts.