

SERVICE PARTS LIST for

MODEL: (H,Y)TIWM006B22S, (H,Y)TIWM008B22S, (H,Y)TIWM012B22S,
(H,Y)TIWM015B22S, (H,Y)TIWM018B22S, (H,Y)TIWM024B22S,
(H,Y)TIWM030B22S

(P0187x-01)

					Voltage	
					1φ 208/230V 60Hz	
No.	Part Name	Replacement Part		Remarks	Q'ty Per Unit	
		Draw. No.	Order No.		TIWM006B22S	TIWM008B22S
1	Heat Exchanger	17H35753A	P31724		1	1
2	Condensate Cap	17C88465A	P27062		1	1
3	Expansion Valve	17F04391A	P28701	MV: PAM-B40YGHS-1 without Coil	1	1
4	EXPV. Coil	17F04390G	P29630	MV: PAM-MD12HS-11	1	1
5	Thermistor	17B24598C	P24016	THM1 for Air Inlet	1	1
6	Thermistor	17B38999A	P29626	THM2 for Air Outlet	1	1
7	Thermistor	17B42636D	P29628	THM3 for Freeze Protection	1	1
8	Thermistor	17B42635D	P29627	THM5 for Gas Pipe	1	1
9	Fan Motor	17A23558A	P29608	38W	1	1
10	Motor Clamp	17A23547A	P29609		1	1
11	Fan	17A23548A	P29610		1	1
12	Bearing	17C85253A	P26601		1	1
13	Bottom Base	17F11642A	P29612		1	1
14	Corner Cover	17B44470A	P29614		1	1
15	Condensate Hose	17B44471A	P29615		1	1
16	Pipe Cover	17B44472A	P29616		1	1
17	Cabinet Cover Assy	17A25146A	P30454	Including part No.31 Flat Panel	1	1
18	Filter	17A23214A	P29619		2	2
19	Condensate Pan Assy	17A23554A	P29621		1	1
20	Mounting Plate	17A23556B	P31921		1	1
21	AS Motor	17B44473A	P29624	for Auto Swing Louver	1	1
22	PCB-S	17H30829D	P31927	PCB1: PI151	1	1
23	PCB-S	17H31294B	P31925	PCB2: PI154	1	1
24	PCB-S	17F11644A	P29625	PCB3: PI153	1	1
25	Terminal Block	17C85280A	P26616	TB1	1	1
26	Terminal Block	17C85281A	P26618	TB2	1	1
27	Fuse	17C90851A	P27957	EFR1, EFS1: 5A	2	2
28	Flare Nut	17E20872C	R4226	φ12.7	1	1
29	Screw Cap	17H20045A	P29629		2	2
30	Switch Cover	17F12199B	P30478		1	1
31	Flat Panel	17F16703A	P30457	without Logo Label	1	1
32	Attaching Plate	17F16755A	—	for Conduit	1	1
33	Electrical Box Assy	17F24783A	—	include all THM	1	1
34	Logo Label	17F17086A	P30481	HITACHI	1	1
35	Logo Label	17F17086B	P30482	YORK	1	1
36	Accessory Kit	17F18692A	P30863	Set of accessories shipped with the unit. (Includes PVC Tube, Cable Clamp, CN14 Cable, etc.)	1	1
37	CN14 Cable	17F20069A	P31115	for Float Switch	1	1

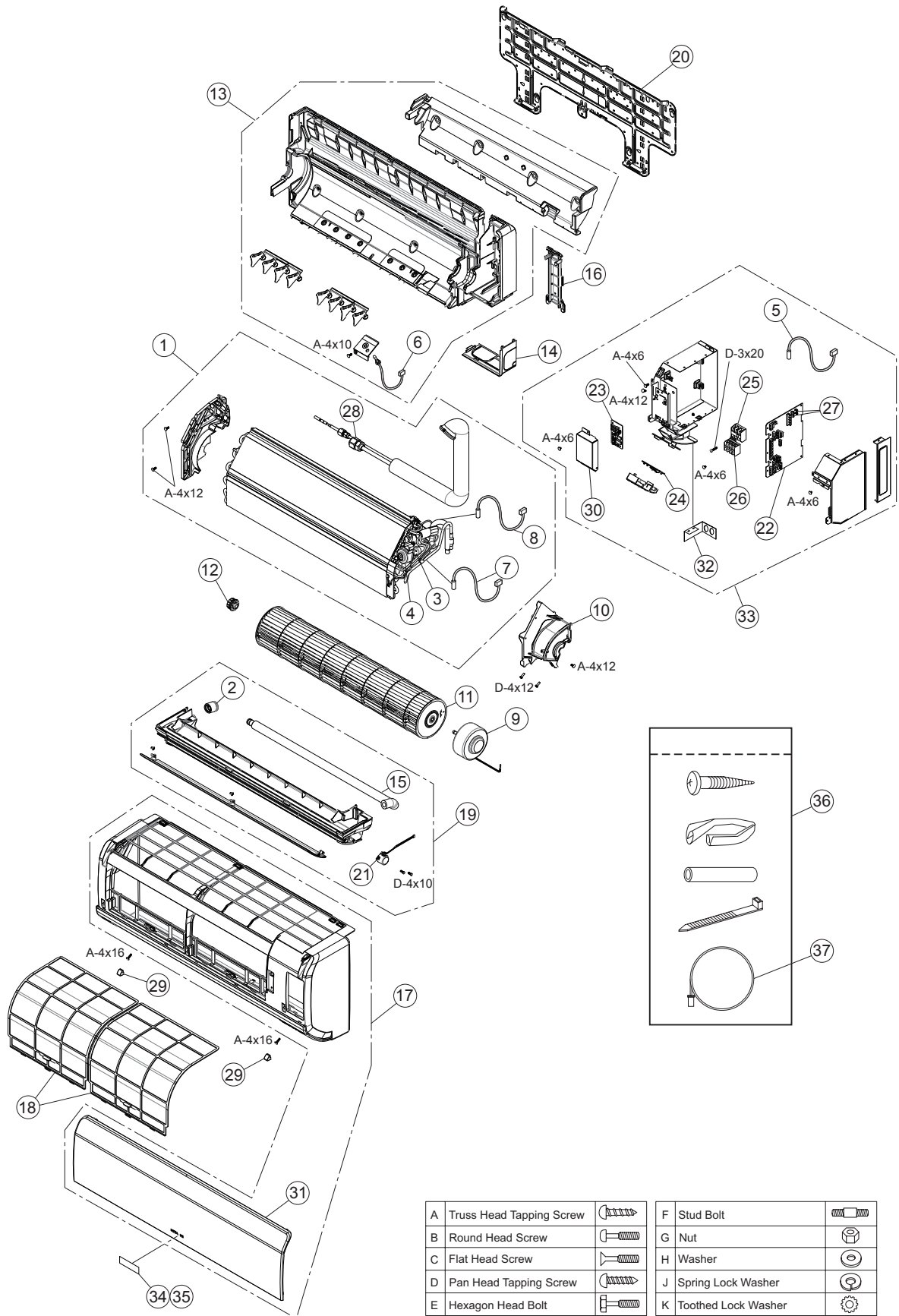
NOTE:

The parts without order number are the custom-ordered, and these are not mentioned in the price list. When ordering them, the part name and the drawing number are required.

Contact your distributor for the delivery date and price of parts.

LOCATION OF SERVICE PARTS IN THE UNIT

MODEL: TIWM006B22S
TIWM008B22S



NOTE:

The parts without order number are the custom-ordered, and these are not mentioned in the price list. When ordering them, the part name and the drawing number are required.
Contact your distributor for the delivery date and price of parts.

SERVICE PARTS LIST for

MODEL: (H,Y)TIWM006B22S, (H,Y)TIWM008B22S, (H,Y)TIWM012B22S,
(H,Y)TIWM015B22S, (H,Y)TIWM018B22S, (H,Y)TIWM024B22S,
(H,Y)TIWM030B22S

(P0187x-02)

					Voltage
					1φ 208/230V 60Hz
No.	Part Name	Replacement Part		Remarks	Q'ty Per Unit
		Draw. No.	Order No.		TIWM012B22S
1	Heat Exchanger	17H35753B	P31725		1
2	Condensate Cap	17C88465A	P27062		1
3	Expansion Valve	17F04391A	P28701	MV: PAM-B40YGHS-1 without Coil	1
4	EXPV. Coil	17F04390G	P29630	MV: PAM-MD12HS-11	1
5	Thermistor	17B24598C	P24016	THM1 for Air Inlet	1
6	Thermistor	17B38999A	P29626	THM2 for Air Outlet	1
7	Thermistor	17B42636D	P29628	THM3 for Freeze Protection	1
8	Thermistor	17B42635D	P29627	THM5 for Gas Pipe	1
9	Fan Motor	17A23558A	P29608	38W	1
10	Motor Clamp	17A23547A	P29609		1
11	Fan	17A23549A	P29611		1
12	Bearing	17C85253A	P26601		1
13	Bottom Base	17F11643A	P29613		1
14	Corner Cover	17B44470A	P29614		1
15	Condensate Hose	17B44471A	P29615		1
16	Pipe Cover	17B44472A	P29616		1
17	Cabinet Cover Assy	17A25145A	P30453	Including part No.31 Flat Panel	1
18	Filter	17A23215A	P29620		2
19	Condensate Pan Assy	17A23555A	P29622		1
20	Mounting Plate	17A23556B	P31921		1
21	AS Motor	17B44473A	P29624	for Auto Swing Louver	1
22	PCB-S	17H30829D	P31927	PCB1: PI151	1
23	PCB-S	17H31294B	P31925	PCB2: PI154	1
24	PCB-S	17F11644A	P29625	PCB3: PI153	1
25	Terminal Block	17C85280A	P26616	TB1	1
26	Terminal Block	17C85281A	P26618	TB2	1
27	Fuse	17C90851A	P27957	EFR1, EFS1: 5A	2
28	Flare Nut	17E20872C	R4226	φ12.7	1
29	Screw Cap	17H20045A	P29629		2
30	Switch Cover	17F12199B	P30478		1
31	Flat Panel	17F16702A	P30456	without Logo Label	1
32	Attaching Plate	17F16755A	—	for Conduit	1
33	Electrical Box Assy	17F24783A	—	include all THM	1
34	Logo Label	17F17086A	P30481	HITACHI	1
35	Logo Label	17F17086B	P30482	YORK	1
36	Accessory Kit	17F18692A	P30863	Set of accessories shipped with the unit. (Includes PVC Tube, Cable Clamp, CN14 Cable, etc.)	1
37	CN14 Cable	17F20069A	P31115	for Float Switch	1

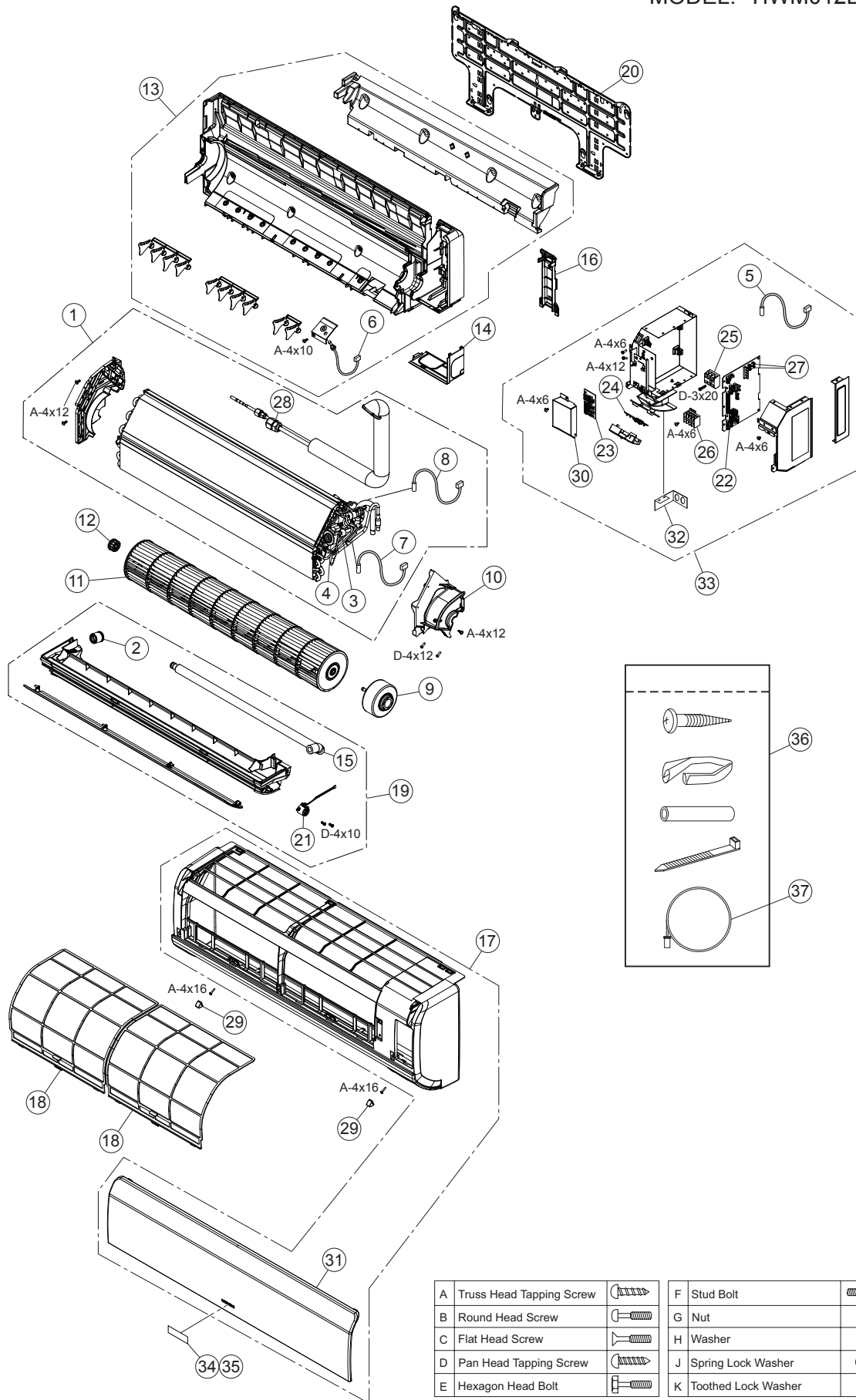
NOTE:

The parts without order number are the custom-ordered, and these are not mentioned in the price list. When ordering them, the part name and the drawing number are required.

Contact your distributor for the delivery date and price of parts.

LOCATION OF SERVICE PARTS IN THE UNIT

MODEL: TIWM012B22S



NOTE:

The parts without order number are the custom-ordered, and these are not mentioned in the price list. When ordering them, the part name and the drawing number are required.
Contact your distributor for the delivery date and price of parts.

SERVICE PARTS LIST for

MODEL: (H,Y)TIWM006B22S, (H,Y)TIWM008B22S, (H,Y)TIWM012B22S,
(H,Y)TIWM015B22S, (H,Y)TIWM018B22S, (H,Y)TIWM024B22S,
(H,Y)TIWM030B22S

(P0187x-03)

					Voltage			
					1φ 208/230V 60Hz			
No.	Part Name	Replacement Part		Remarks	Q'ty Per Unit			
		Draw. No.	Order No.		TIWM015B22S	TIWM018B22S	TIWM024B22S	TIWM030B22S
1	Heat Exchanger	17H35753C	P31726		1			
	Heat Exchanger	17H35753E	P31728			1	1	1
2	Condensate Cap	17F23672A	P31730		1	1	1	1
3	Expansion Valve	17F04391A	P28701	MV: PAM-B40YGHS-1 without Coil	1			
	Expansion Valve	17F04392A	P28702	MV: PAM-B80YGHS-1 without Coil		1	1	1
4	EXPV. Coil	17F04390G	P29630	MV: PAM-MD12HS-11	1	1	1	1
5	Thermistor	17B24544H	P31000	THM1 for Air Inlet	1	1	1	1
6	Thermistor	17B38999A	P29626	THM2 for Air Outlet	1	1	1	1
7	Thermistor	17B42636D	P29628	THM3 for Freeze Protection	1	1	1	1
8	Thermistor	17B42635D	P29627	THM5 for Gas Pipe	1	1	1	1
9	Fan Motor	17F23725A	P31731	38W	1	1	1	
	Fan Motor	17F23725B	P31732	38W				1
10	Motor Clamp	17F23673A	P31733		1	1	1	1
11	Motor Clamp	17F23674A	P31734		1	1	1	1
12	Motor Clamp	17F23675A	P31735		1	1	1	1
13	Fan	17F23676A	P31736		1	1	1	1
14	Bearing	17C85253A	P26601		1	1	1	1
15	Cabinet Assy	17A28080A	P31737		1	1	1	1
16	Condensate Hose	17B49672A	P31738		1	1	1	1
17	Pipe Cover	17A28081A	P31739		1	1	1	1
18	Cabinet Cover Assy	17A28082B	P31922	Including part No.38 Flat Panel	1	1	1	1
19	Filter	17A28063A	P31741		2	2	2	2
20	Receiver Cover	17F23678B	P31917		1	1	1	1
21	Condensate Pan Assy	17A28084A	P31743		1	1	1	1
22	Mounting Plate	17A28085A	P31744		1	1	1	1
23	AS Motor	17A18041A	P27077		2	2	2	2
24	PCB-S	17H30829D	P31927	PCB1: PI151	1	1	1	1
25	PCB-S	17H31294B	P31925	PCB2: PI154	1	1	1	1
26	PCB-S	17A28562A	P31918	PCB3: PI153	1	1	1	1
27	Terminal Block	17C85280A	P26616	TB1	1	1	1	1
28	Terminal Block	17C85281A	P26618	TB2	1	1	1	1
29	Fuse	17C90851A	P27957	EFR1, EFS1: 5A	2	2	2	2
30	Horizontal Blade	17A28087A	P31746	Upper Side	1	1	1	1
31	Horizontal Blade	17A28088A	P31747	Lower Side	1	1	1	1
32	Bushing	17F23679A	P31748		6	6	6	6
33	Screw Cap	17F23680A	P31749		2	2	2	2
34	Screw Cap	17F23681A	P31750		1	1	1	1
35	Flare Nut	17E20872C	R4226	φ12.7	1			
	Flare Nut	17E20872D	R4227	φ15.88		1	1	1
36	Switch Cover	17F23683A	P31751		1	1	1	1
37	Switch Cover	17F12199B	P30478		1	1	1	1
38	Flat Panel	17F23682B	P31923	without Logo Label	1	1	1	1

NOTE:

The parts without order number are the custom-ordered, and these are not mentioned in the price list. When ordering them, the part name and the drawing number are required.

Contact your distributor for the delivery date and price of parts.

MODEL: (H,Y)TIWM006B22S, (H,Y)TIWM008B22S, (H,Y)TIWM012B22S,
(H,Y)TIWM015B22S, (H,Y)TIWM018B22S, (H,Y)TIWM024B22S,
(H,Y)TIWM030B22S

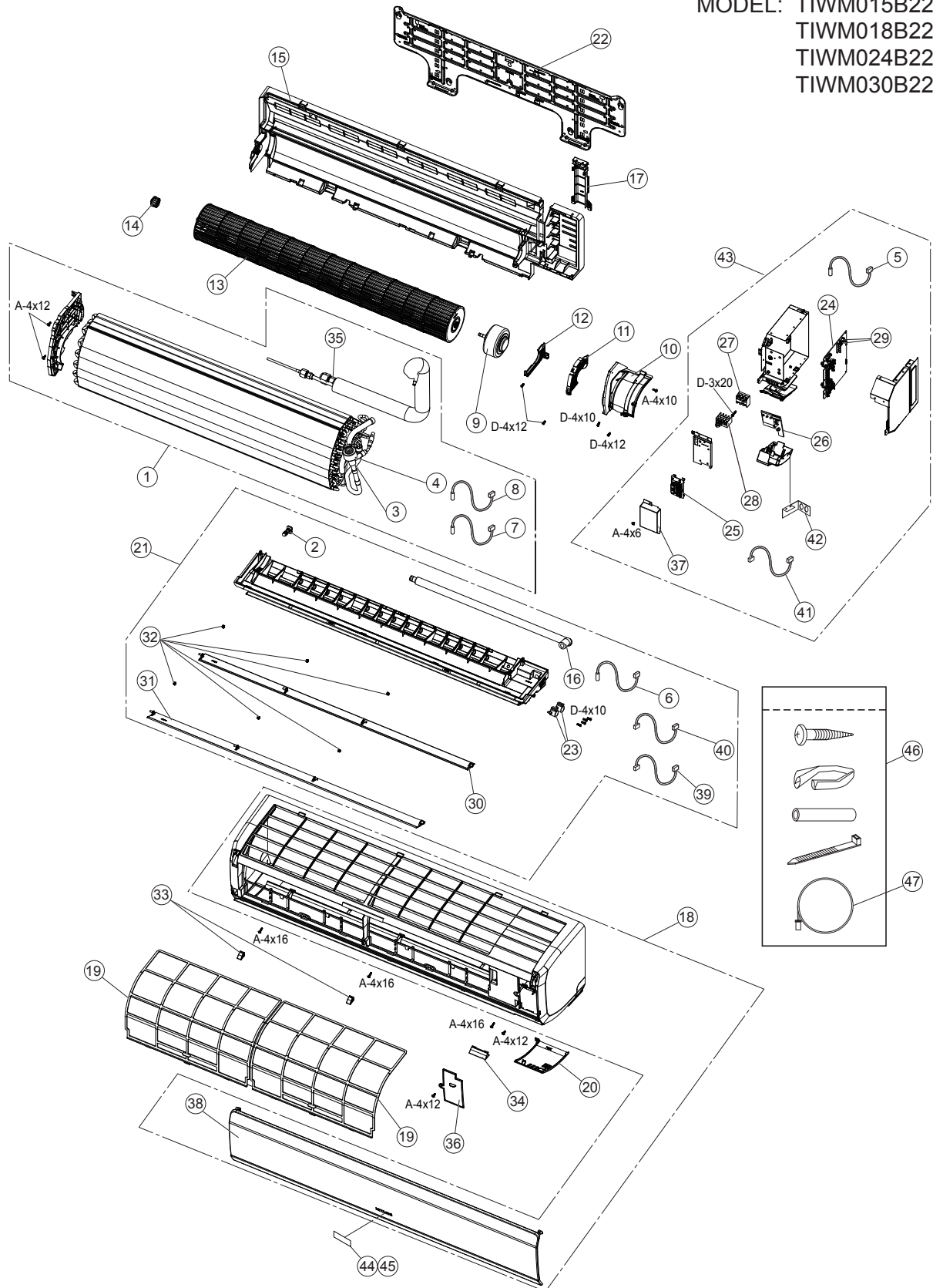
Voltage

1 ϕ 208/230V 60Hz

NOTE:
The parts without order number are the custom-ordered, and these are not mentioned in the price list. When ordering them, the part name and the drawing number are required.
Contact your distributor for the delivery date and price of parts.

LOCATION OF SERVICE PARTS IN THE UNIT

MODEL: TIWM015B22S
TIWM018B22S
TIWM024B22S
TIWM030B22S



A	Truss Head Tapping Screw		F	Stud Bolt	
B	Round Head Screw		G	Nut	
C	Flat Head Screw		H	Washer	
D	Pan Head Tapping Screw		J	Spring Lock Washer	
E	Hexagon Head Bolt		K	Toothed Lock Washer	

NOTE:

The unicomated coating is applied to iron and steel material for the unspecified materials of the bolt and screw.

NOTE:

The parts without order number are the custom-ordered, and these are not mentioned in the price list. When ordering them, the part name and the drawing number are required.

Contact your distributor for the delivery date and price of parts.