

SERVICE PARTS LIST for Outdoor Unit (Low Ambient VRF Heat Pump)

MODEL: (H,Y)VAHP072B31CW, (H,Y)VAHP096B31CW,
(H,Y)VAHP072B41CW, (H,Y)VAHP096B41CW

					(P0165x-01)	
					Voltage	
					208/230V 60Hz	460V 60Hz
No.	Part Name	Replacement Part		Remarks	Q'ty Per Unit	
		Draw. No.	Part No.		(H,Y)VAHP072B31CW (H,Y)VAHP096B31CW	(H,Y)VAHP072B41CW (H,Y)VAHP096B41CW
1	Side Cover	H7B02572A	QU098013		1	1
2	Side Cover	H7B02573A	QU098014		1	1
3	TH Holder	H17D55179A	-	for Ta Thermistor	1	1
4	Thermistor	H7B00032A	QU015012	THM7: for Ambient (Ta)	1	1
5	Front Stay	H17F03718A	-		1	1
6	Side Stay	H7C02636A	-		1	
7	Electrical Box Stay	H7C01520E	-		1	1
8	Electrical Box Cover	H7C03200D	-		1	1
9	Pipe Cover	H17H06168A	QU098017		1	1
10	Protection Net	H7C03091A	QU034002		1	1
11	Rear Stay	H7D04910A	-		1	1
12	Motor Clamp	H7C03053B	-		1	1
13	Fan Motor	H7A00529A	QU071012	MOF1	1	1
14	M6 SUS Screw	H17D30309E	-	SUS, M6, for Fan Motor	4	4
15	Propeller Fan	H17A21604A	QU051001	f644	1	1
16	Washer	H17E08525E	-	SUS	1	1
17	Closing Nut	H17D50034D	-	SUS, M10	1	1
18	Upper Cover	H17C79378E	QU098002		1	1
19	Air Outlet Grille	H17F06637A	QU034001		1	1
20	Special Screw	17G84611D	P27991	SUS, M5	22	22
21	Front Cover	H17B43545A	QU098019		1	1
22	Service Cover	H7D05012B	QU098015		1	1
23	Special Screw	17G84611A	P25678	SUS, M5	103	109
24	Sub E-Box Cover	H7C01492D	-		1	1
25	Protective Tube	06SY0800	-	Thermistor Protection Tube (33ft (10m))	1	1
26	Cover Assy	H17H13808A	QU098005		1	1
27	Cover Assy	H17H13809A	QU098006		1	1
28	Cover Assy	H17H13812B	QU098010		1	1
29	Cover Assy	H17H13812A	QU098009		1	1
30	Upper Cover	H17F08337A	QU098004		1	1
31	Screw	51CB0416	-	SWCH, M4	2	2
32	Screw	51CB0410	-	SWCH, M4		14
33	Screw	51CB0408	-	SWCH, M4	2	2
34	Stay	H7D06987A	-			1
35	Piping Cover	H17F14129B	QU098021		1	1
36	Accessory Kit	H7D07905C	QX099007	Set of accessories shipped with the unit. (Includes Cable Clamp, etc.)	1	1

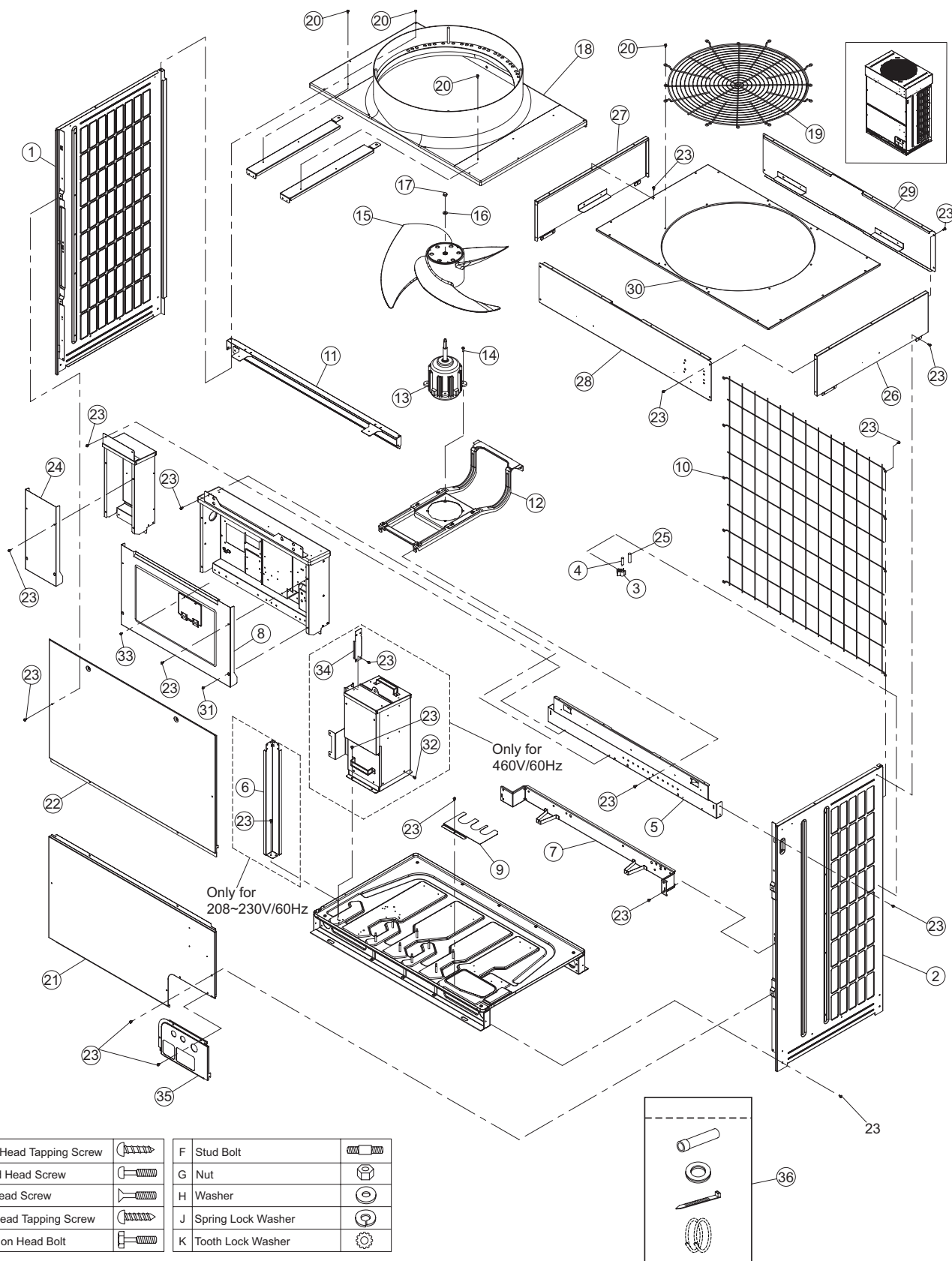
NOTE:

The parts without order number are the custom-ordered, and these are not mentioned in the price list. When ordering them, the part name and the drawing number are required.
Contact your distributor for the delivery date and price of parts.

LOCATION OF SERVICE PARTS IN THE UNIT for Outdoor Unit (Low Ambient VRF Heat Pump)

MODEL: (H,Y)VAHP072B31CW
(H,Y)VAHP096B31CW
(H,Y)VAHP072B41CW
(H,Y)VAHP096B41CW

< Cabinet and Fan >



NOTE:

The parts without order number are the custom-ordered, and these are not mentioned in the price list. When ordering them, the part name and the drawing number are required.
Contact your distributor for the delivery date and price of parts.

SERVICE PARTS LIST for Outdoor Unit (Low Ambient VRF Heat Pump)

MODEL: (H,Y)VAHP072B31CW, (H,Y)VAHP096B31CW,
(H,Y)VAHP072B41CW, (H,Y)VAHP096B41CW

					(P0165x-02)	
					Voltage	
					208/230V 60Hz	460V 60Hz
No.	Part Name	Replacement Part		Remarks	Q'ty Per Unit	
		Draw. No.	Part No.		(H,Y)VAHP072B31CW (H,Y)VAHP096B31CW	(H,Y)VAHP072B41CW (H,Y)VAHP096B41CW
1	Compressor	17F18776A	06954296	MC1: EK655DHD-65A2Y	1	
		17F19108A	06954167	MC1: EK655DHD-65D2Y		1
2	Compressor	17F18584A	06954166	MC2: EK655DH-65H2Y	1	
		17F19087A	06954157	MC2: EK655DH-65E2Y		1
3	Vibration Absorber	H17D21147B	-		4	4
4	Vibration Absorber	H17D49474A	-		4	4
5	Vibration Absorber	H17D21207A	-		6	6
6	Nut	H17D49475A	-		6	6
7	Crankcase Heater	H7D07781B	QU078010	CH1: 120W (40W x 3), Belt Heater	1	1
8	Crankcase Heater	H7D02452B	QU078002	CH2: 80W (40W x 2), Belt Heater	1	1
9	Rubber Cap	H17B29767A	QU032001		2	2
10	Accumulator	H7B03605A	QU089009		1	1
11	Stopper	H7D07780A	-		1	1
12	Valve Stay	H17F09346A	-		1	1
13	Oil Separator	H7C03052A	QU055001		2	2
14	Check Valve	H7C01709A	QU042001		2	2
15	Pressure Switch	H7C03969A	QU001001	PSH1: Shanghai Junle, H20PS	2	2
16	Oil Separator Stay	H17H06170A	-		1	1
17	Saddle	H7D02638A	-		2	2
18	Double Tube	H17F05849A	QU041001		1	1
19	Silencer	H7E00415A	QU302002		2	2
20	Expansion Valve	17C78465A	P26007	MVB: Saginomiya, UKV-25D26	1	1
21	EXPV. Coil	17C78180C	P27606	MVB: Saginomiya, UKV-A035	1	1
22	Stop Valve	H7C00434A	QU027003	3/8 (Liquid)	1	1
23	Plate Stay	H17H06172A	-		1	1
24	Stopper	H17E25685A	-		2	2
25	Rubber Seat	H17H10681A	-		2	2
26	Reversing Valve	H7C03986A	QU081003	RVR1, 2: Saginomiya, STF-H07U12	1	1
27	Coil	H7C03987B	QU081001	RVR1, 2: Saginomiya, STF-H01AQ3004UAA1	1	1
28	Strainer	H17G15764B	QU030003		1	1
29	Strainer	H17G62701A	QU030005		1	1
30	Check Joint	H7C00441A	QU028001		3	3
31	Solenoid Valve	17C64849A	P24511	SVA, SVX: Nichiden Kougyou, SR10PA	4	4
32	Check Joint	17E08728B	QU028003		2	2
33	Coil	17C76434B	P30572	SVA, SVX: Nichiden Kougyou, SR10PA	4	4
34	Stop Valve	H17F09233A	QU027001	7/8 (Gas)	1	1
35	Strainer	H17D55178A	QU030001		2	2
36	Strainer	H17G62700A	QU030004		2	2
37	Expansion Valve	17F07288B	P29262	MV1: PAM-BB0YGHS-101	1	1
38	EXPV. Coil	17F07287A	P29263	MV1: Saginomiya, PAM-MD12HS-7	1	1
39	Pressure Sensor	17B46255A	P26013	PD: Saginomiya, NSK-BH050F	1	1
40	Pressure Sensor	17B46256A	P26014	PS: Saginomiya, NSK-BH020F	1	1
41	Sound Proof Cover	H7C02480A	QU032003		1	1
42	Sound Proof Cover	H17C59825B	QU032002		2	2
43	Sound Proof Cover	H7C02481A	QU032012		1	1

NOTE:

The parts without order number are the custom-ordered, and these are not mentioned in the price list. When ordering them, the part name and the drawing number are required.

Contact your distributor for the delivery date and price of parts.

MODEL: (H,Y)VAHP072B31CW, (H,Y)VAHP096B31CW,
(H,Y)VAHP072B41CW, (H,Y)VAHP096B41CW

Voltage	
208/230V 60Hz	460V 60Hz
Q'ty Per Unit	

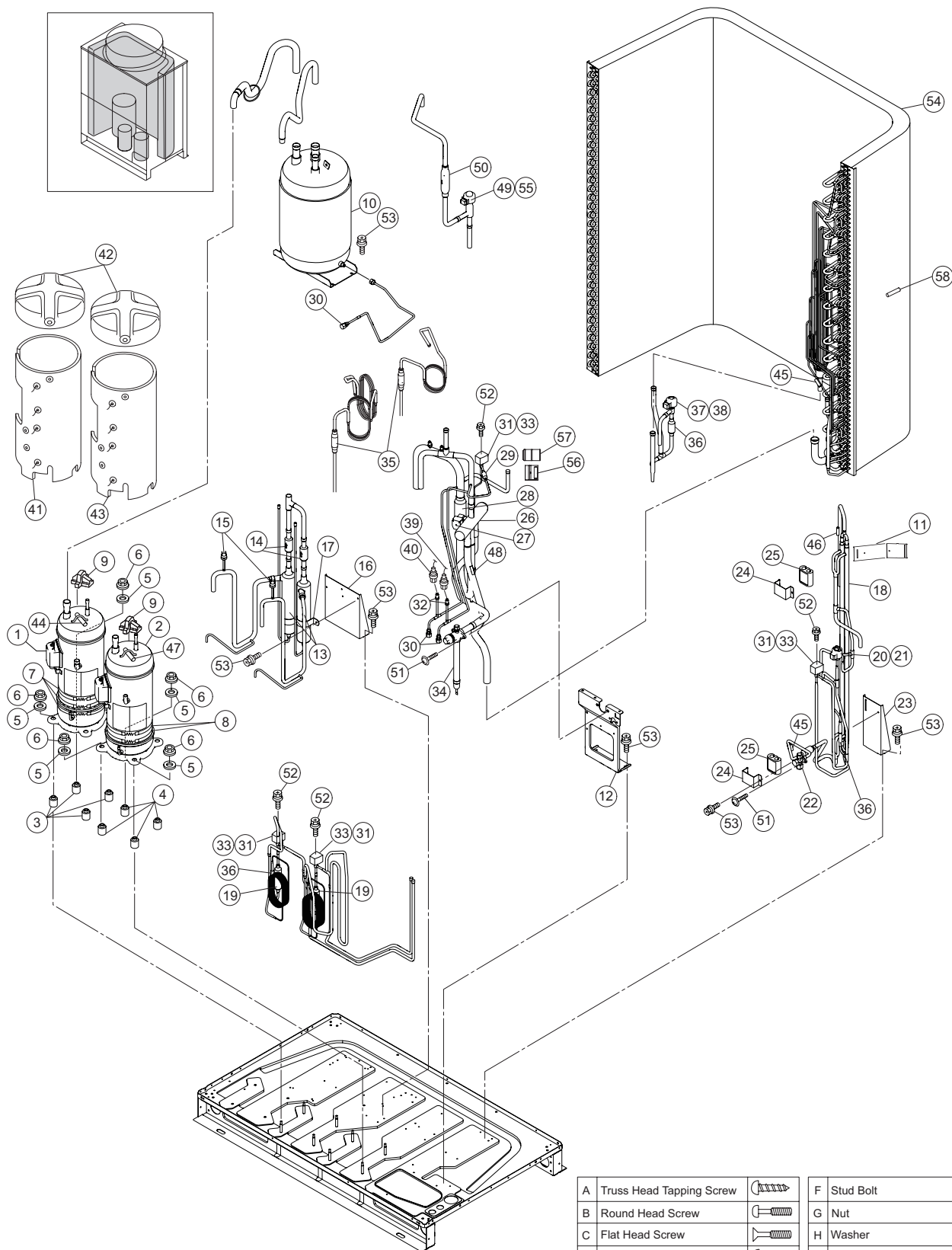
[illegible]

NOTE: The parts without order number are the custom-ordered, and these are not mentioned in the price list. When ordering them, the part name and the drawing number are required.
Contact your distributor for the delivery date and price of parts.

LOCATION OF SERVICE PARTS IN THE UNIT for Outdoor Unit (Low Ambient VRF Heat Pump)

MODEL: (H,Y)VAHP072B31CW
(H,Y)VAHP096B31CW
(H,Y)VAHP072B41CW
(H,Y)VAHP096B41CW

< Refrigerant Cycle >



A	Truss Head Tapping Screw		F	Stud Bolt	
B	Round Head Screw		G	Nut	
C	Flat Head Screw		H	Washer	
D	Pan Head Tapping Screw		J	Spring Lock Washer	
E	Hexagon Head Bolt		K	Tooth Lock Washer	

NOTE:

A protective coating like zinc is applied to iron and steel for unspecified materials like a bolt or screw.

NOTE:

The parts without order number are the custom-ordered, and these are not mentioned in the price list. When ordering them, the part name and the drawing number are required.

Contact your distributor for the delivery date and price of parts.

MODEL: (H,Y)VAHP072B31CW, (H,Y)VAHP096B31CW

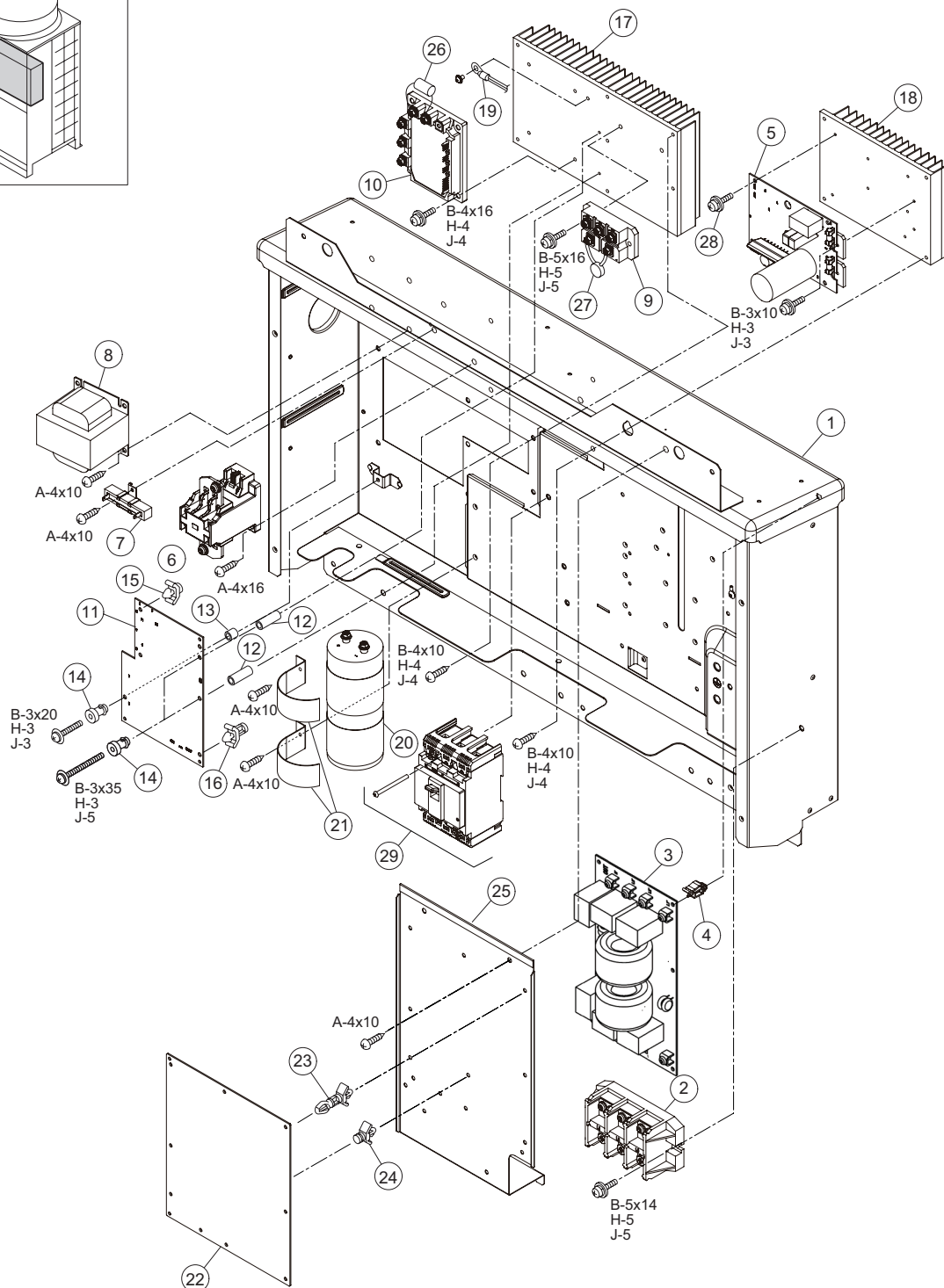
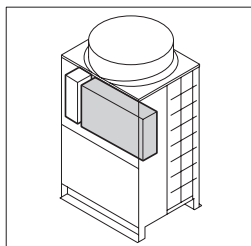
[illegible]

SPN201606

LOCATION OF SERVICE PARTS IN THE UNIT for Outdoor Unit (Low Ambient VRF Heat Pump)

MODEL: (H,Y)VAHP072B31CW
(H,Y)VAHP096B31CW

< Electrical Parts > (208/230V 60Hz)



A	Truss Head Tapping Screw		F	Stud Bolt	
B	Round Head Screw		G	Nut	
C	Flat Head Screw		H	Washer	
D	Pan Head Tapping Screw		J	Spring Lock Washer	
E	Hexagon Head Bolt		K	Tooth Lock Washer	

NOTE:

A protective coating like zinc is applied to iron and steel for unspecified materials like a bolt or screw.

NOTE:

The parts without order number are the custom-ordered, and these are not mentioned in the price list. When ordering them, the part name and the drawing number are required.

Contact your distributor for the delivery date and price of parts.

MODEL: (H,Y)VAHP072B41CW, (H,Y)VAHP096B41CW

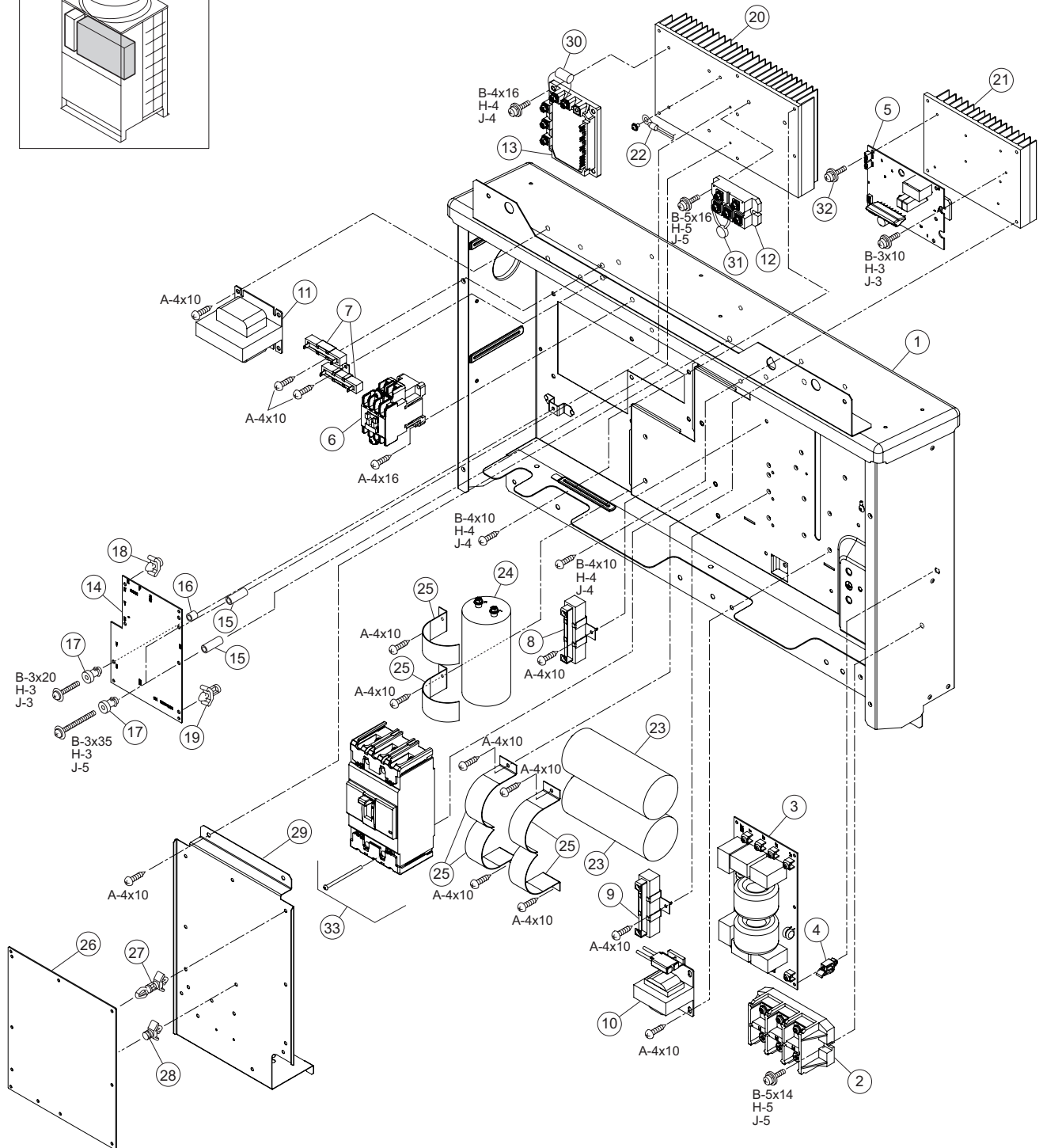
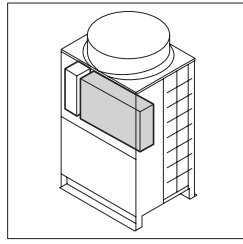
[illegible]











SPN201606

LOCATION OF SERVICE PARTS IN THE UNIT for Outdoor Unit (Low Ambient VRF Heat Pump)

MODEL: (H,Y)VAHP072B41CW
(H,Y)VAHP096B41CW

< Electrical Parts > (460V 60Hz)



A	Truss Head Tapping Screw		F	Stud Bolt	
B	Round Head Screw		G	Nut	
C	Flat Head Screw		H	Washer	
D	Pan Head Tapping Screw		J	Spring Lock Washer	
E	Hexagon Head Bolt		K	Tooth Lock Washer	

NOTE:

NOTE:
The parts without order number are the custom-ordered, and these are not mentioned in the price list. When ordering them, the part name and the drawing number are required.
Contact your distributor for the delivery date and price of parts.

© 2018 Hitachi-Johnson Controls Air-Conditioning, Inc.

MODEL: (H,Y)VAHP072B31CW, (H,Y)VAHP096B31CW

208/230V 60Hz

SPN201606

MODEL: (H,Y)VAHP072B41CW, (H,Y)VAHP096B41CW

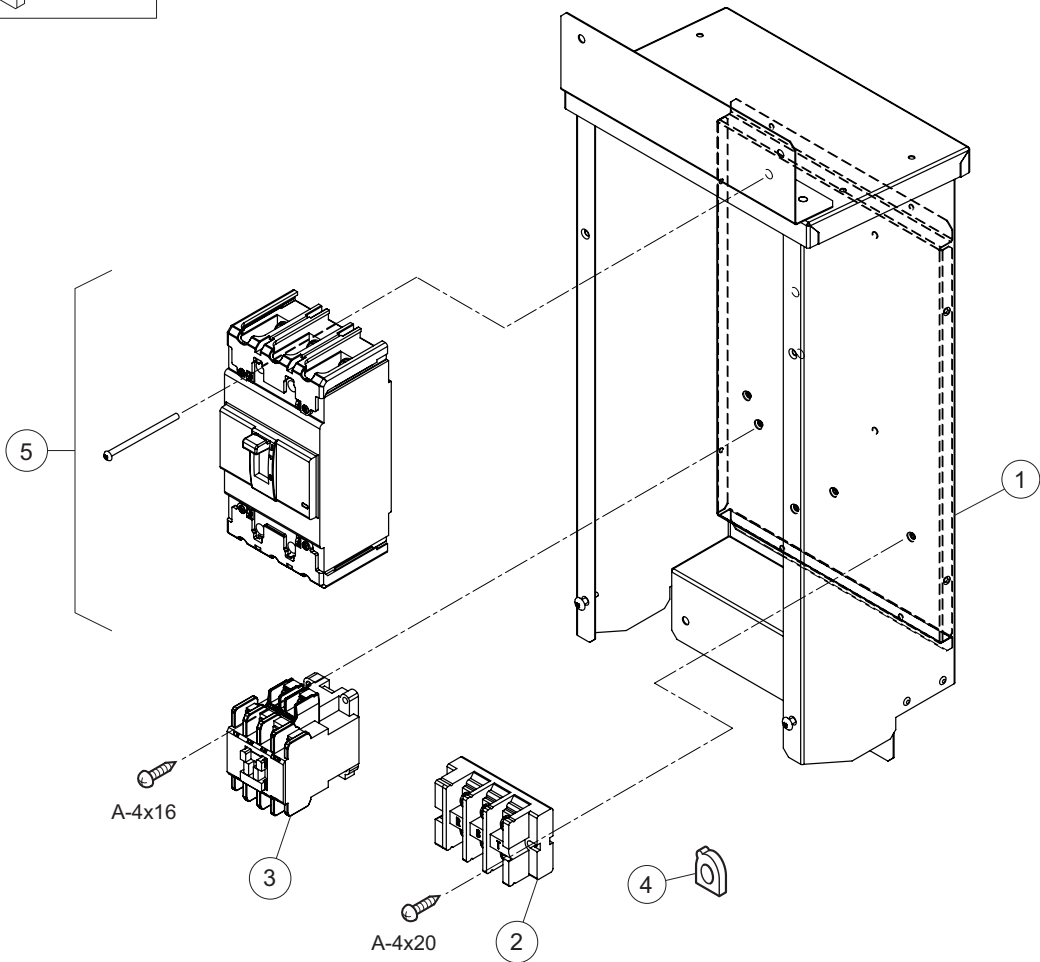
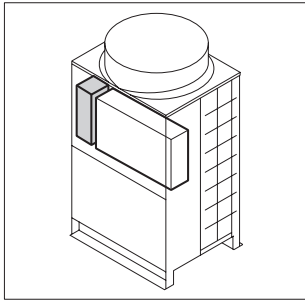
460V 60Hz

SPN201606

LOCATION OF SERVICE PARTS IN THE UNIT
for Outdoor Unit (Low Ambient VRF Heat Pump)

MODEL: (H,Y)VAHP072B31CW
(H,Y)VAHP096B31CW
(H,Y)VAHP072B41CW
(H,Y)VAHP096B41CW

< Sub Electrical Box >



A	Truss Head Tapping Screw		F	Stud Bolt	
B	Round Head Screw		G	Nut	
C	Flat Head Screw		H	Washer	
D	Pan Head Tapping Screw		J	Spring Lock Washer	
E	Hexagon Head Bolt		K	Tooth Lock Washer	

NOTE:
A protective coating like zinc is applied to iron and steel for unspecified materials like a bolt or screw.

NOTE:
The parts without order number are the custom-ordered, and these are not mentioned in the price list. When ordering them, the part name and the drawing number are required.
Contact your distributor for the delivery date and price of parts.

MODEL: (H,Y)VAHP072B41CW, (H,Y)VAHP096B41CW

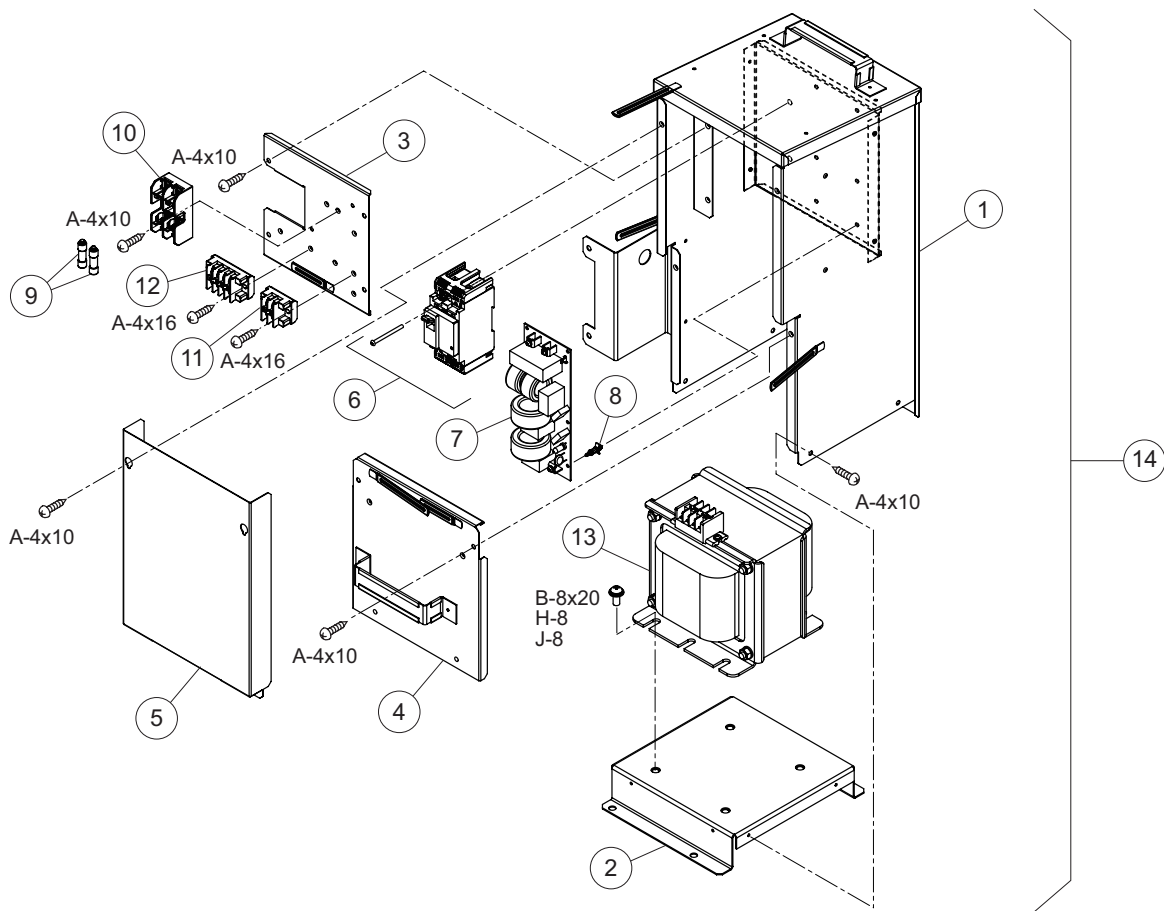
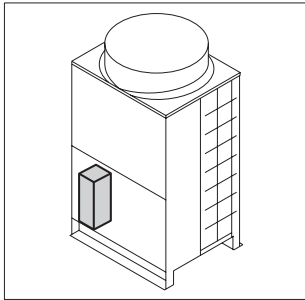
[illegible]

SPN201606

LOCATION OF SERVICE PARTS IN THE UNIT
for Outdoor Unit (Low Ambient VRF Heat Pump)

MODEL: (H,Y)VAHP072B41CW
(H,Y)VAHP096B41CW

< TF Box >



A	Truss Head Tapping Screw		F	Stud Bolt	
B	Round Head Screw		G	Nut	
C	Flat Head Screw		H	Washer	
D	Pan Head Tapping Screw		J	Spring Lock Washer	
E	Hexagon Head Bolt		K	Tooth Lock Washer	

NOTE:
A protective coating like zinc is applied to iron and steel for unspecified materials like a bolt or screw.

NOTE:
The parts without order number are the custom-ordered, and these are not mentioned in the price list. When ordering them, the part name and the drawing number are required.
Contact your distributor for the delivery date and price of parts.