

SERVICE PARTS LIST for Wall Mount

MODEL: TIWM006B21S, TIWM008B21S, TIWM012B21S

					Voltage		
					1ϕ 208/230V 60Hz		
No.	Part Name	Replacement Part		Remarks	Q'ty Per Unit		
		Draw. No.	Part No.		TIWM006B21S	TIWM008B21S	TIWM012B21S
1	Heat Exchanger	17A23545A	P29606		1	1	
		17A23546A	P29607				1
2	Drain Cap	17C88465A	P27062		1	1	1
3	Expansion Valve	17F04391A	P28701		1	1	1
4	Motor for EXPV.	17F04390G	P29630		1	1	1
5	Thermistor	17B24598C	P24016	for Air Inlet, THM1	1	1	1
6	Thermistor	17B38999A	P29626	for Air Outlet, THM2	1	1	1
7	Thermistor	17B42636D	P29628	for Freeze Protection, THM3	1	1	1
8	Thermistor	17B42635D	P29627	for Gas Pipe, THM5	1	1	1
9	Fan Motor	17A23558A	P29608	38W	1	1	1
10	Motor Clamp	17A23547A	P29609		1	1	1
11	Fan	17A23548A	P29610		1	1	
		17A23549A	P29611				1
12	Bearing Assy	17C85253A	P26601		1	1	1
13	Bottom Base	17F11642A	P29612		1	1	
		17F11643A	P29613				1
14	Corner Cover	17B44470A	P29614		1	1	1
15	Drain Hose	17B44471A	P29615		1	1	1
16	Pipe Cover	17B44472A	P29616		1	1	1
17	Cabinet Cover	17A25146A	P30454	No.32 Flat Panel x 1	1	1	
		17A25145A	P30453	No.32 Flat Panel x 1			1
18	Air Filter	17A23214A	P29619		2	2	
		17A23215A	P29620				2
19	Drain Pan Assy	17A23554A	P29621		1	1	
		17A23555A	P29622				1
20	Mounting Plate	17A23556B	-		1	1	1
21	AS Motor	17B44473A	P29624		1	1	1
22	PCB-S	17H18655D	P30201	PCB1 (PI121)	1	1	1
23	PCB-S	17H18656A	P29519	PCB2 (PI122)	1	1	1
24	PCB-S	17F11644A	P29625	PCB3	1	1	1
25	Terminal Block	17C85280A	P26616	TB1	1	1	1
26	Terminal Block	17C85281A	P26618	TB2	1	1	1
27	Fuse	17C90851A	P27957	EFR1, EFS1: 5A	2	2	2
28	Flare Nut	17E20872C	R4226	ϕ12.7	1	1	1
29	Screw Cap	17H20045A	P29629		2	2	2
30	Switch Cover	17F12199B	P30478		1	1	1
31	Cord	17H21273A	P29710		1	1	1
32	Flat Panel	17F16703A	P30457		1	1	
		17F16702A	P30456				1
33	Attaching Plate	17F16755A	-	for Conduit	1	1	1
34	Electrical Box Assy	17F16742A	-	include all THM	1	1	1
35	Logo Label	17F17086A	P30481	HITACHI	1	1	1
36	Logo Label	17F17086B	P30482	YORK	1	1	1
37	Accessory Kit	17F18692A	P30863	Set of accessories shipped with the unit. (Includes PVC Tube, Cable Clamp, CN14 Cable, etc.)	1	1	1
38	CN14 Cable	17F20069A	P31115	for Float Switch	1	1	1

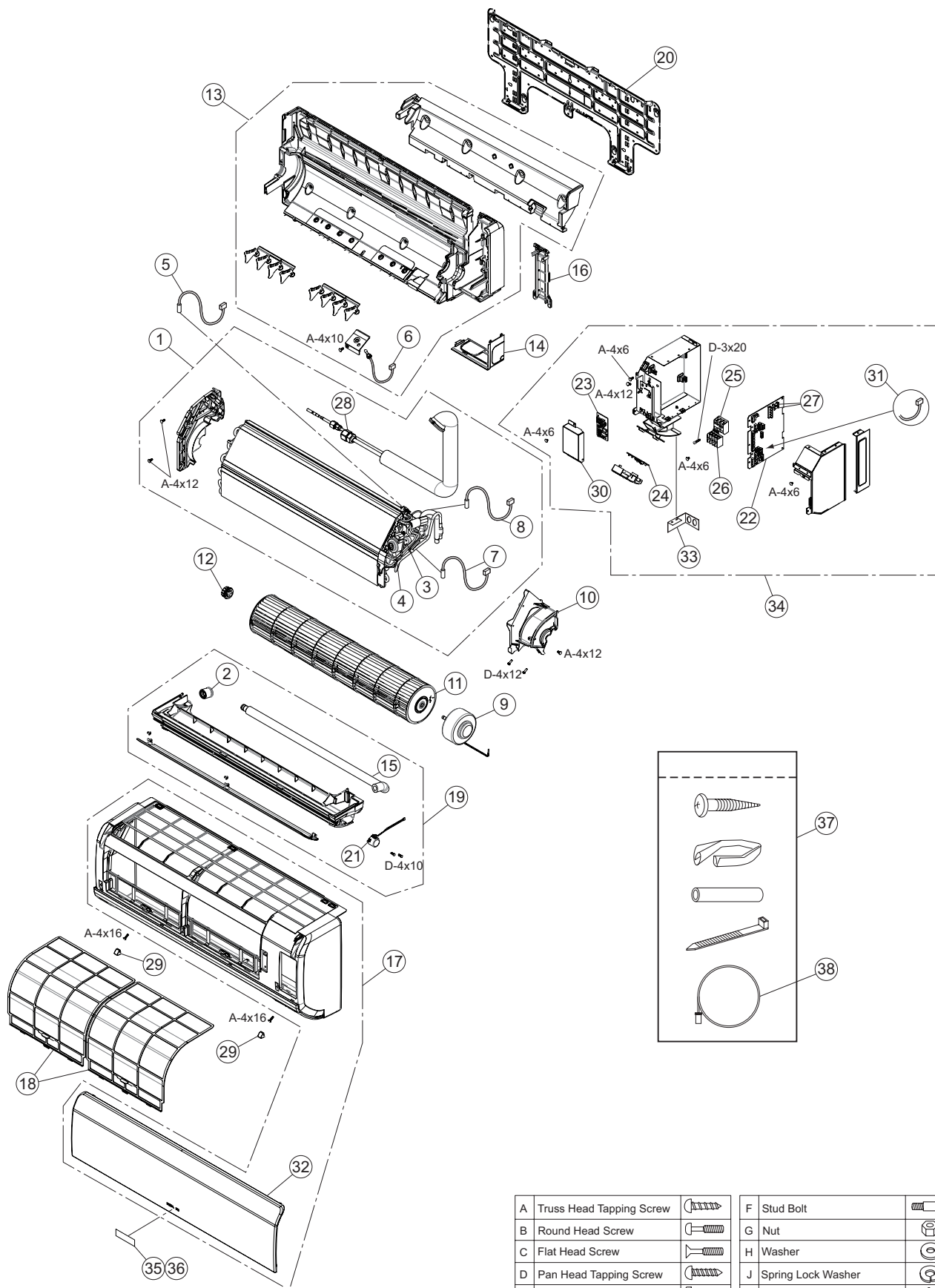
NOTE:

The parts without order number are the custom-ordered, and these are not mentioned in the price list. When ordering them, the part name and the drawing number are required.

Contact your distributor for the delivery date and price of parts.

LOCATION OF SERVICE PARTS IN THE UNIT for Wall Mount

MODEL: TIWM006B21S
TIWM008B21S



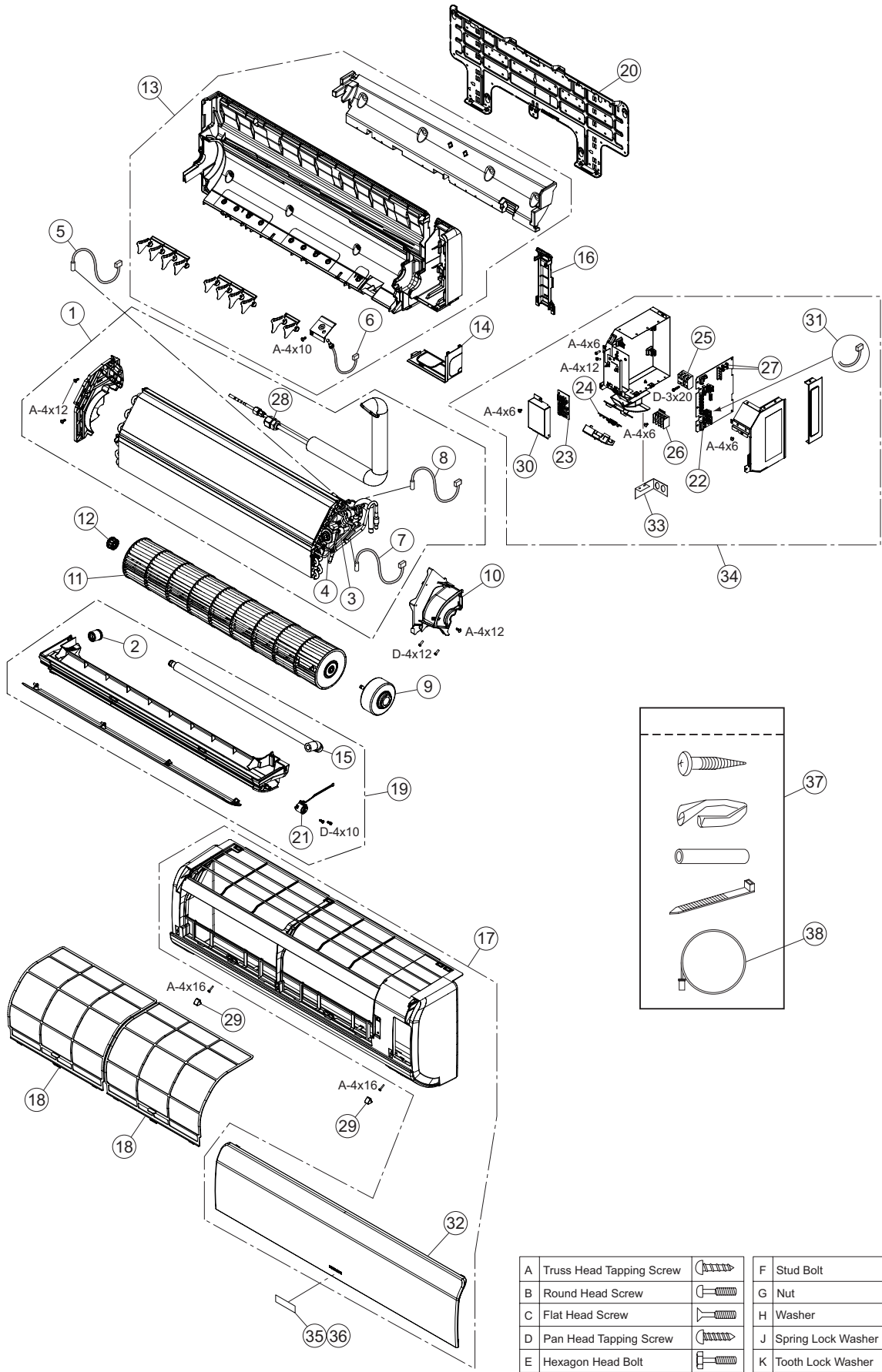
A	Truss Head Tapping Screw		F	Stud Bolt	
B	Round Head Screw		G	Nut	
C	Flat Head Screw		H	Washer	
D	Pan Head Tapping Screw		J	Spring Lock Washer	
E	Hexagon Head Bolt		K	Tooth Lock Washer	

NOTE:

The parts without order number are the custom-ordered, and these are not mentioned in the price list. When ordering them, the part name and the drawing number are required.
Contact your distributor for the delivery date and price of parts.

LOCATION OF SERVICE PARTS IN THE UNIT for Wall Mount

MODEL: TIWM012B21S



A	Truss Head Tapping Screw		F	Stud Bolt	
B	Round Head Screw		G	Nut	
C	Flat Head Screw		H	Washer	
D	Pan Head Tapping Screw		J	Spring Lock Washer	
E	Hexagon Head Bolt		K	Tooth Lock Washer	

NOTE:
A protective coating like zinc is applied to iron and steel for unspecified materials like a bolt or screw.

NOTE:
The parts without order number are the custom-ordered, and these are not mentioned in the price list. When ordering them, the part name and the drawing number are required.
Contact your distributor for the delivery date and price of parts.

SERVICE PARTS LIST for Wall Mount

MODEL: TIWM015B21S, TIWM018B21S, TIWM024B21S, TIWM030B21S

					Voltage			
					1ϕ 208/230V 60Hz			
No.	Part Name	Replacement Part		Remarks	Q'ty Per Unit			
		Draw. No.	Part No.		TIWM015B21S	TIWM018B21S	TIWM024B21S	TIWM030B21S
1	Heat Exchanger	17A23535A	P29594		1			
2	Heat Exchanger	17A23536B	P29596			1	1	1
3	Drain Cap	17C88465A	P27062		1	1	1	1
4	Expansion Valve	17F04391A	P28701		1			
5	Expansion Valve	17F04392A	P28702			1	1	1
6	Motor for EXPV.	17F04390G	P29630		1	1	1	1
7	Thermistor	17B24598C	P24016	for Air Inlet, THM1	1	1	1	1
8	Thermistor	17B38999A	P29626	for Air Outlet, THM2	1	1	1	1
9	Thermistor	17B42636D	P29628	for Freeze Protection, THM3	1	1	1	1
10	Thermistor	17B42635D	P29627	for Gas Pipe, THM5	1	1	1	1
11	Fan Motor	17B37604C	P27063	38W	1	1		
12	Fan Motor	17A23557A	P29597	38W			1	1
13	Motor Clamp	17A18031A	P27064		1	1	1	1
14	Fan	17A18032A	P27065		1	1	1	1
15	Bearing Assy	17C88466A	P27066		1	1	1	1
16	Cabinet Assy	17A23694A	P29705		1	1	1	1
17	Corner Cover	17A18034B	P27332		1	1	1	1
18	Pipe Fixing Plate	17B37605A	P27069		2	2	2	2
19	Drain Hose	17B37606A	P27070		1	1	1	1
20	Pipe Cover	17A18035B	P27333		1	1	1	1
21	Cabinet Cover	17A25144A	P30452	No.42 Flat Panel x 1	1	1	1	1
22	Air Filter	17A18037A	P27073		1	1	1	1
23	Air Filter	17A18038A	P27074		1	1	1	1
24	Receiver Cover	17F11640B	P29640		1	1	1	1
25	Drain Pan Assy	17A18039B	P29601		1	1	1	1
26	Mounting Plate	17A23541A	P29602		1	1	1	1
27	AS Motor	17A18041A	P27077		2	2	2	2
28	PCB-S	17H18655D	P30201	PCB1 (PI121)	1	1	1	1
29	PCB-S	17A23538A	P29603	PCB4	1	1	1	1
30	PCB-S	17H18656A	P29519	PCB2 (PI122)	1	1	1	1
31	PCB-S	17A18042A	P27080	PCB3	1	1	1	1
32	Terminal Block	17C85280A	P26616	TB1	1	1	1	1
33	Terminal Block	17C85281A	P26618	TB2	1	1	1	1
34	Fuse	17C90851A	P27957	EFR1, EFS1: 5A	2	2	2	2
35	Horizontal Blade	17A23543A	P29604		1	1	1	1
36	Horizontal Blade	17A23544A	P29605		1	1	1	1
37	Screw Cap	17B37608A	P27079		3	3	3	3
38	Flare Nut	17E20872C	R4226	ϕ12.7	1			
39	Flare Nut	17E20872D	R4227	ϕ15.88		1	1	1
40	Switch Cover	17F12198B	P30458		1	1	1	1
41	Cord	17H21273A	P29710		1	1	1	1
42	Flat Panel	17F16701A	P30455		1	1	1	1
43	Attaching Plate	17F16756A	-	for Conduit	1	1	1	1
44	Electrical Box Assy	17F16743A	-	include all THM	1	1	1	1
45	Logo Label	17F17086A	P30481	HITACHI	1	1	1	1
46	Logo Label	17F17086B	P30482	YORK	1	1	1	1
47	Accessory Kit	17F18692B	P30864	Set of accessories shipped with the unit. (Includes PVC Tube, Cable Clamp, CN14 Cable, etc.)	1	1	1	1
48	CN14 Cable	17F20069A	P31115	for Float Switch	1	1	1	1

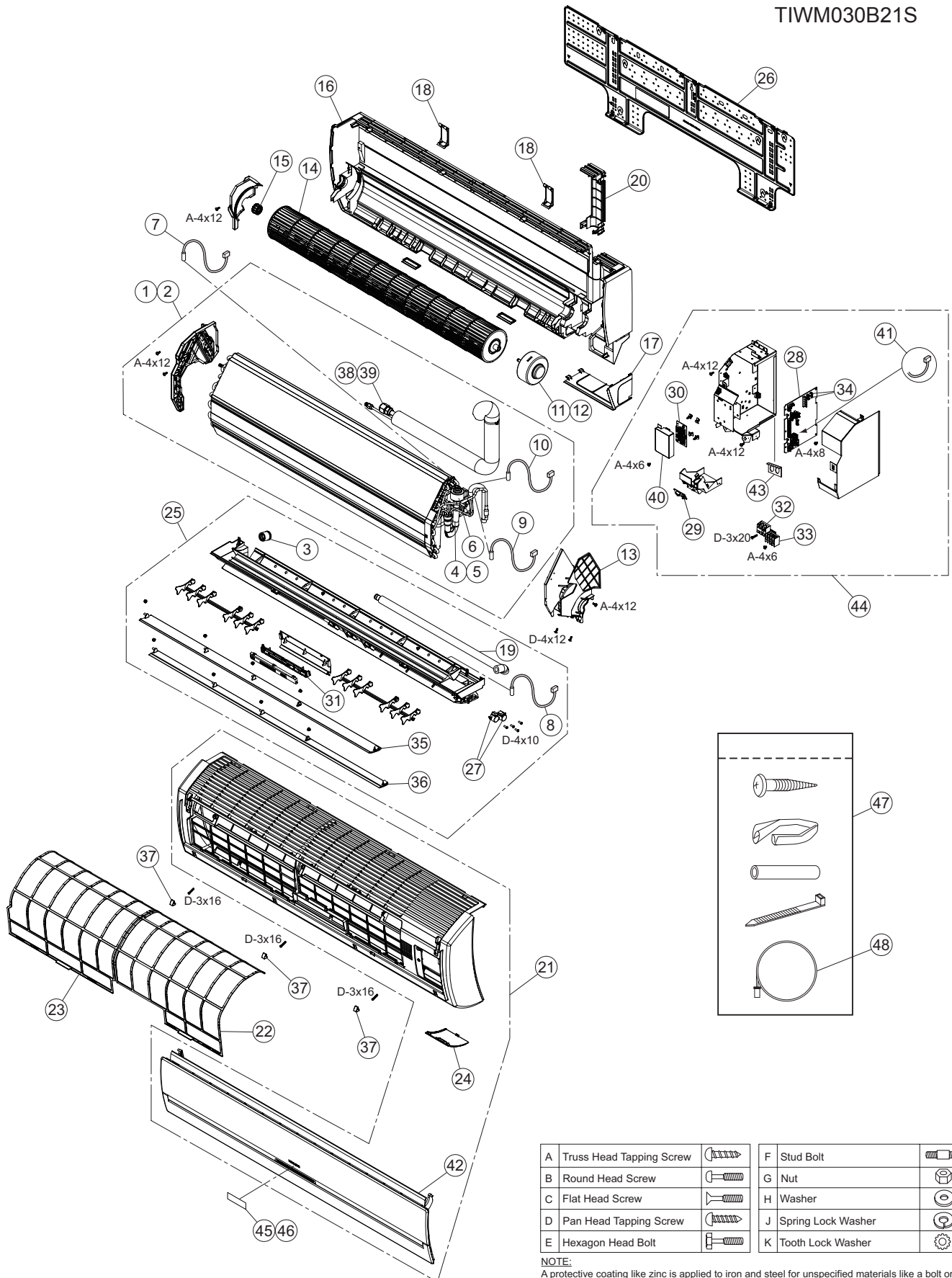
NOTE:

The parts without order number are the custom-ordered, and these are not mentioned in the price list. When ordering them, the part name and the drawing number are required.

Contact your distributor for the delivery date and price of parts.

LOCATION OF SERVICE PARTS IN THE UNIT for Wall Mount

MODEL: TIWM015B21S
TIWM018B21S
TIWM024B21S
TIWM030B21S



NOTE:

The parts without order number are the custom-ordered, and these are not mentioned in the price list. When ordering them, the part name and the drawing number are required.
Contact your distributor for the delivery date and price of parts.