

MODEL: (H,Y)VWH(P,R)072B32S, (H,Y)VWH(P,R)096B32S, (H,Y)VWH(P,R)120B32S,
(H,Y)VWH(P,R)072B42S, (H,Y)VWH(P,R)096B42S, (H,Y)VWH(P,R)120B42S

Voltage	
208/230V 60Hz	460V 60Hz

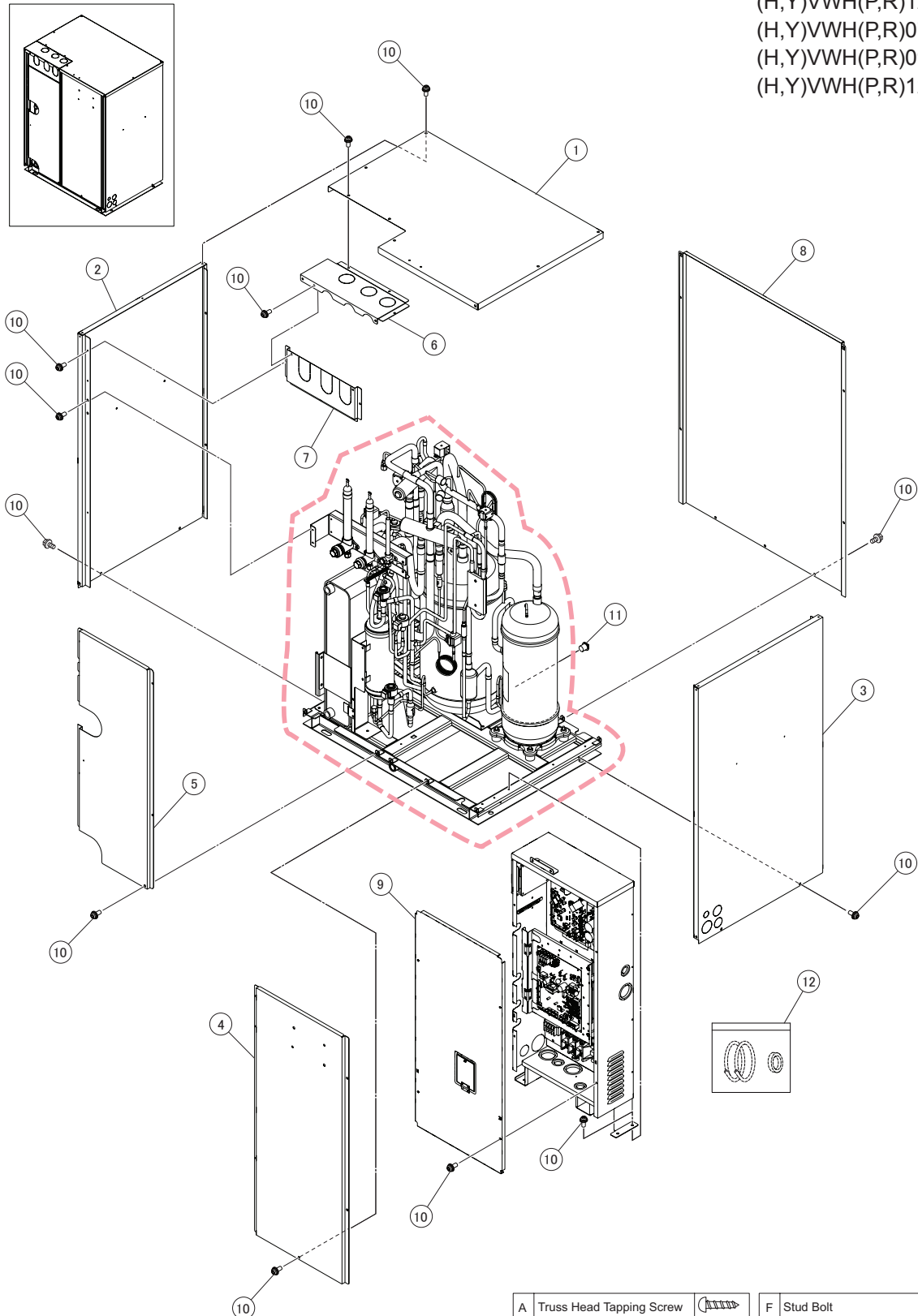
NOTES:

- © 2019 Hitachi-Johnson Controls Air Conditioning, Inc.

LOCATION OF SERVICE PARTS in the Water Source Unit (VRF Heat Pump and Heat Recovery)

< Cabinet >

MODEL: (H,Y)VWH(P,R)072B32S
(H,Y)VWH(P,R)096B32S
(H,Y)VWH(P,R)120B32S
(H,Y)VWH(P,R)072B42S
(H,Y)VWH(P,R)096B42S
(H,Y)VWH(P,R)120B42S



A	Truss Head Tapping Screw		F	Stud Bolt	
B	Round Head Screw		G	Nut	
C	Flat Head Screw		H	Washer	
D	Pan Head Tapping Screw		J	Spring Lock Washer	
E	Hexagon Head Bolt		K	Tooth Lock Washer	

NOTE:

A protective coating like zinc is applied to iron and steel for unspecified materials like a bolt or screw.

NOTES:

- The parts without order numbers are custom-ordered and not mentioned in the price list.
- When ordering parts, the part name and the drawing number are required.
- Contact your distributor for the delivery date and price of the service parts.

MODEL: (H,Y)VWH(P,R)144B32S, (H,Y)VWH(P,R)168B32S, (H,Y)VWH(P,R)192B32S, (H,Y)VWH(P,R)21632S,
(H,Y)VWH(P,R)144B42S, (H,Y)VWH(P,R)168B42S, (H,Y)VWH(P,R)192B42S, (H,Y)VWH(P,R)21642S

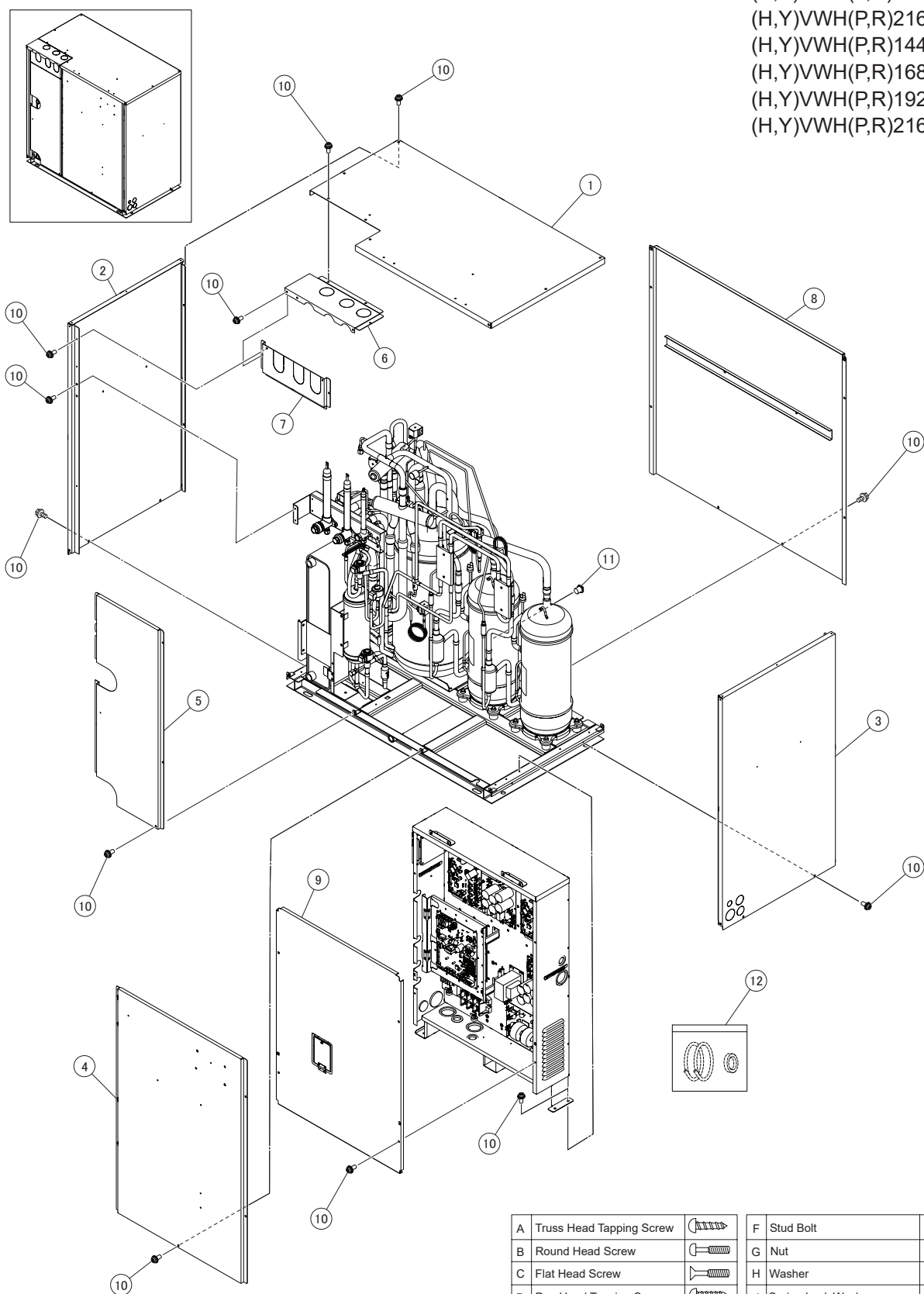
[illegible]

- The parts without order numbers are custom-ordered and not mentioned in the price list.
- When ordering parts, the part name and the drawing number are required.
- Contact your distributor for the delivery date and price of the service parts.

LOCATION OF SERVICE PARTS in the Water Source Unit (VRF Heat Pump and Heat Recovery)

< Cabinet >

MODEL: (H,Y)VWH(P,R)144B32S
(H,Y)VWH(P,R)168B32S
(H,Y)VWH(P,R)192B32S
(H,Y)VWH(P,R)216B32S
(H,Y)VWH(P,R)144B42S
(H,Y)VWH(P,R)168B42S
(H,Y)VWH(P,R)192B42S
(H,Y)VWH(P,R)216B42S



A	Truss Head Tapping Screw		F	Stud Bolt	
B	Round Head Screw		G	Nut	
C	Flat Head Screw		H	Washer	
D	Pan Head Tapping Screw		J	Spring Lock Washer	
E	Hexagon Head Bolt		K	Tooth Lock Washer	

NOTE:

A protective coating like zinc is applied to iron and steel for unspecified materials like a bolt or screw.

NOTES:

- The parts without order numbers are custom-ordered and not mentioned in the price list.
- When ordering parts, the part name and the drawing number are required.
- Contact your distributor for the delivery date and price of the service parts.

© 2018 Hitachi-Johnson Controls Air-Conditioning, Inc.

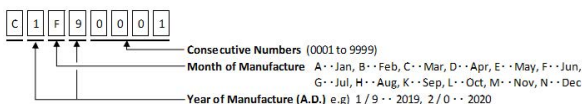
SERVICE PARTS LIST for Water Source Unit (VRF Heat Pump and Heat Recovery)

MODEL: (H,Y)VWH(P,R)072B32S, (H,Y)VWH(P,R)096B32S, (H,Y)VWH(P,R)120B32S,
(H,Y)VWH(P,R)072B42S, (H,Y)VWH(P,R)096B42S, (H,Y)VWH(P,R)120B42S

(P0185x-03)

(H,Y)VWH(P,R)072B42S, (H,Y)VWH(P,R)096B42S, (H,Y)VWH(P,R)120B42S					Voltage					
					208/230V 60Hz			460V 60Hz		
No.	Part Name	Replacement Part		Remarks	Q'ty Per Unit					
		Draw. No.	Order No.		(H,Y)VWH(P,R)072B32S	(H,Y)VWH(P,R)096B32S	(H,Y)VWH(P,R)120B32S	(H,Y)VWH(P,R)072B42S	(H,Y)VWH(P,R)096B42S	(H,Y)VWH(P,R)120B42S
1	INV Compressor	17F22204E	06954630	MC1: DB65PHD-A2YC2	1	1	-	-	-	-
		17F22205E	06964610	MC1: DC80PHD-A2YC2	-	-	1	-	-	-
		17F22204C	06954634	MC1: DB65PHD-D2YC2	-	-	-	1	1	-
		17F22205C	06964614	MC1: DC80PHD-D2YC2	-	-	-	-	-	1
2	Vibration Absorber	17D49474A	P17308		4	4	4	4	4	4
3	Vibration Absorber	17D21207A	P13109		3	3	3	3	3	3
4	Nut	17D49475A	P21245		3	3	3	3	3	3
5	Crankcase Heater	H7D02452E	QU076014	CH1: 32W, Belt Heater	2	2	2	-	-	-
		H7D10864A	QU076015	CH1: 40W, Belt Heater	-	-	-	1	1	1
6	Rubber Cap	H17B29767A	QU032001		1	1	1	1	1	1
7	Sound Proof Cover	H7C06631A	-		1	1	1	1	1	1
8	Sound Proof Cover	17F03363B	-		1	1	1	1	1	1
9	Accumulator	H7B04869A	QU089044		1	1	-	1	1	-
		H7B04871A	QU089047		-	-	1	-	-	1
9-1	Special Screw	17G24763A	-		4	4	4	4	4	4
10	Oil Container Assy	H7D10713A	-		1	1	1	1	1	1
10-1	Access Port	H7C00441A	QU028001		1	1	1	1	1	1
11	V Stay Assy	H7D14251A	-		1	1	1	1	1	1
12	D-Pipe Assy	H7D11598A	-		1	1	1	1	1	1
12-1	Pressure Switch	H7C00447A	QU001002	PSH1: ACB-1UB59	1	1	1	1	1	1
12-2	Oil Separator	H7D10481A	-		1	1	1	1	1	1
12-3	Check Valve	17F08040A	P29954	Applies to products manufactured until May 2019	1	1	1	1	1	1
		H7D15154A	QU042012	Applies to products manufactured from June 2019	1	1	1	1	1	1
12-4	Strainer	H17D55178A	QU030001		1	1	1	1	1	1
13	Receiver	H7C01729A	QU058002		1	1	1	1	1	1
14	L-Pipe Assy	H7C07089C	-		1	1	-	1	1	-
		H7C07089B	-		-	-	1	-	-	1
14-1	Expansion Valve	H17F05654A	QU021031	MVB: UKV-25D174 without Coil	1	1	1	1	1	1
14-2	EXPV. Coil	H17C78180C	QU021005	MVB: UKV-U040E or UKV-A035	1	1	1	1	1	1
14-3	Special Screw	17G24763A	-	SUS, M5	3	3	3	3	3	3
14-4	Double Pipe Assy	H17F05849C	QU041002		1	1	1	1	1	1
14-5	Strainer	H17G62700A	QU030004		1	1	1	1	1	1
15	Stop Valve	H7C00434C	QU318001	for Liquid Line	1	1	-	1	1	-
		H7C00435B	QU319001	for Liquid Line	-	-	1	-	-	1
16	Reversing Valve Assy	H7B04944B	-		1	1	-	1	1	-
		H7B04940B	-		-	-	1	-	-	1
16-1	Reversing Valve	H7C03986A	QU081003	RVR1: STF-H0712 without Coil	1	1	-	1	1	-
		H7C03986A	QU081003	RVR1: STF-H0404 without Coil	-	-	1	-	-	1
16-2	Reversing Valve	H7C03985A	QU081002	RVR2: STF-H0404 without Coil	1	1	-	1	1	-
		H7C03986A	QU081003	RVR2: STF-H0404 without Coil	-	-	1	-	-	1
16-3	Coil	H7C03987B	QU081001	RVR1,2: STF-H01AQ2338A1	2	2	2	2	2	2
16-4	Special Screw	-	-	for Solenoid Valve (M5), Included in No.16-3	2	2	2	2	2	2
16-5	Solenoid Valve	H7C02884A	QU077010	SVA: FDF5A11 without Coil	1	1	1	1	1	1
16-6	Coil	H7C01911A	QU303007	SVA: FQ-A0520D	1	1	1	1	1	1

How to check production date from the serial number.



NOTES:

- The parts without order numbers are custom-ordered and not mentioned in the price list.
- When ordering the parts, the part name and the drawing number are required.
- Contact your distributor for the delivery date and price of the service parts.
- When replacing parts, be sure to check the shape of the installed check valve and product production date. Carefully, select the correct check valve according to the production date.

SERVICE PARTS LIST for Water Source Unit (VRF Heat Pump and Heat Recovery)

MODEL: (H,Y)VWH(P,R)072B32S, (H,Y)VWH(P,R)096B32S, (H,Y)VWH(P,R)120B32S,
(H,Y)VWH(P,R)072B42S, (H,Y)VWH(P,R)096B42S, (H,Y)VWH(P,R)120B42S

(P0185x-03)

MODEL: (H,Y)VWH(P,R)072B32S, (H,Y)VWH(P,R)096B32S, (H,Y)VWH(P,R)120B32S, (H,Y)VWH(P,R)072B42S, (H,Y)VWH(P,R)096B42S, (H,Y)VWH(P,R)120B42S					Voltage					
					208/230V 60Hz			460V 60Hz		
No.	Part Name	Replacement Part		Remarks	Q'ty Per Unit					
		Draw. No.	Order No.		(H,Y)VWH(P,R)072B32S	(H,Y)VWH(P,R)096B32S	(H,Y)VWH(P,R)120B32S	(H,Y)VWH(P,R)072B42S	(H,Y)VWH(P,R)096B42S	(H,Y)VWH(P,R)120B42S
16-7	Solenoid Valve	H7C01910A	QU077007	SVG: TEV-S without Coil	2	2	2	2	2	2
16-8	Coil	H7C01911A	QU303007	SVG: TEV-SM0AQ2400A1	2	2	2	2	2	2
16-9	Special Screw	17E19003B	P31810	for Solenoid Valve (M4)	3	3	3	3	3	3
16-10	Access Port	H7C01396B	QU096001	Pd, Ps	2	2	2	2	2	2
16-11	Pressure Sensor (D)	H17B46257A	QU012018	NSK-BH050D-421	1	1	1	1	1	1
16-12	Pressure Sensor (S)	H17B47112A	QU012016	NSK-BH020D-421	1	1	1	1	1	1
16-13	Strainer	H17G15764A	QU030002		1	1	1	1	1	1
16-14	Strainer	H17G15764B	QU030003		2	2	2	2	2	2
16-15	Oil Return Pipe Assy	H7D10715A	-		1	1	-	1	1	-
		H7D10715B	-		-	-	1	-	-	1
17	Stop Valve	H7C05857B	QU321002	for Gas (Low) Line	1	1	-	1	1	-
		H17F09234A	QU027002	for Gas (Low) Line	-	-	1	-	-	1
18	Stop Valve	H7C05857B	QU321002	for Gas (High/Low) Line	1	1	-	1	1	-
		H17F09233A	QU027001	for Gas (High/Low) Line	-	-	1	-	-	1
19	S-Pipe	H7D09713A	-		1	1	-	1	1	-
		H7D08988A	-		-	-	1	-	-	1
20	Expansion Valve Assy	H7C05965A	-		1	1	1	1	1	1
20-1	Expansion Valve	H17F07288B	QU021022	MV1: PAM-BBOYGHS-1 without Coil	1	1	1	1	1	1
20-2	EXPV. Coil	H17F07287A	QU021006	MV1: PAM-MD12HS-7	1	1	1	1	1	1
20-3	Expansion Valve	H17F05654A	QU021031	MV3: UKV-25D174 without Coil	1	1	1	1	1	1
20-4	EXPV. Coil	H17C78180A	QU021019	MV3: UKV-U029E or UKV-A027	1	1	1	1	1	1
20-5	Strainer	H17G62700A	QU030004		1	1	1	1	1	1
20-6	Radiation Plate	H7D10520A	-		1	1	1	1	1	1
21	RC-Pipe Assy	H7D12806A	-		1	1	1	1	1	1
21-1	Solenoid Valve	H7C01910A	QU077007	SVC: FDF5A11 without Coil	1	1	1	1	1	1
21-2	Coil	H7C01911A	QU303007	SVC: FQ-A0520D	1	1	1	1	1	1
21-3	Special Screw	17E19003B	P31810	for Solenoid Valve (M4)	1	1	1	1	1	1
21-4	Check Valve	H7C00440A	QU042002		1	1	1	1	1	1
21-5	Strainer	H17G62701A	QU030005		1	1	1	1	1	1
22	Plate Heat Exchanger	H7C06767A	-		1	1	-	1	1	-
		H7C06767B	-		-	-	1	-	-	1
22-1	Expansion Valve	H17F07288B	QU021022	MV4: PAM-BBOYGHS-1 without Coil	1	1	1	1	1	1
22-2	EXPV. Coil	H17F07287A	QU021006	MV4: PAM-MD12HS-7	1	1	1	1	1	1
22-3	Strainer	H17G62700A	QU030004		1	1	1	1	1	1
22-4	HEX Plate	H7D10240A	-		1	1	1	1	1	1
22-5	HEX Plate	H7D10241C	-		1	1	-	1	1	-
		H7D10241B	-		-	-	1	-	-	1
22-6	Special Screw	17G24763A	-		7	7	7	7	7	7
22-7	Screw	453H0520	-		2	2	2	2	2	2
22-8	HEX Insulation	H7D10583A	-		2	2	2	2	2	2
22-9	HEX Insulation	H7D10582A	-		1	1	-	1	1	-
		H7D10582B	-		-	-	1	-	-	1
23	SVB-Pipe Assy	H7C07013A	-		1	1	1	1	1	1

NOTES:

- The parts without order numbers are custom-ordered and not mentioned in the price list.
- When ordering parts, the part name and the drawing number are required.
- Contact your distributor for the delivery date and price of the service parts.

MODEL: (H,Y)VWH(P,R)072B32S, (H,Y)VWH(P,R)096B32S, (H,Y)VWH(P,R)120B32S,
(H,Y)VWH(P,R)072B42S, (H,Y)VWH(P,R)096B42S, (H,Y)VWH(P,R)120B42S

(P0185x-03)

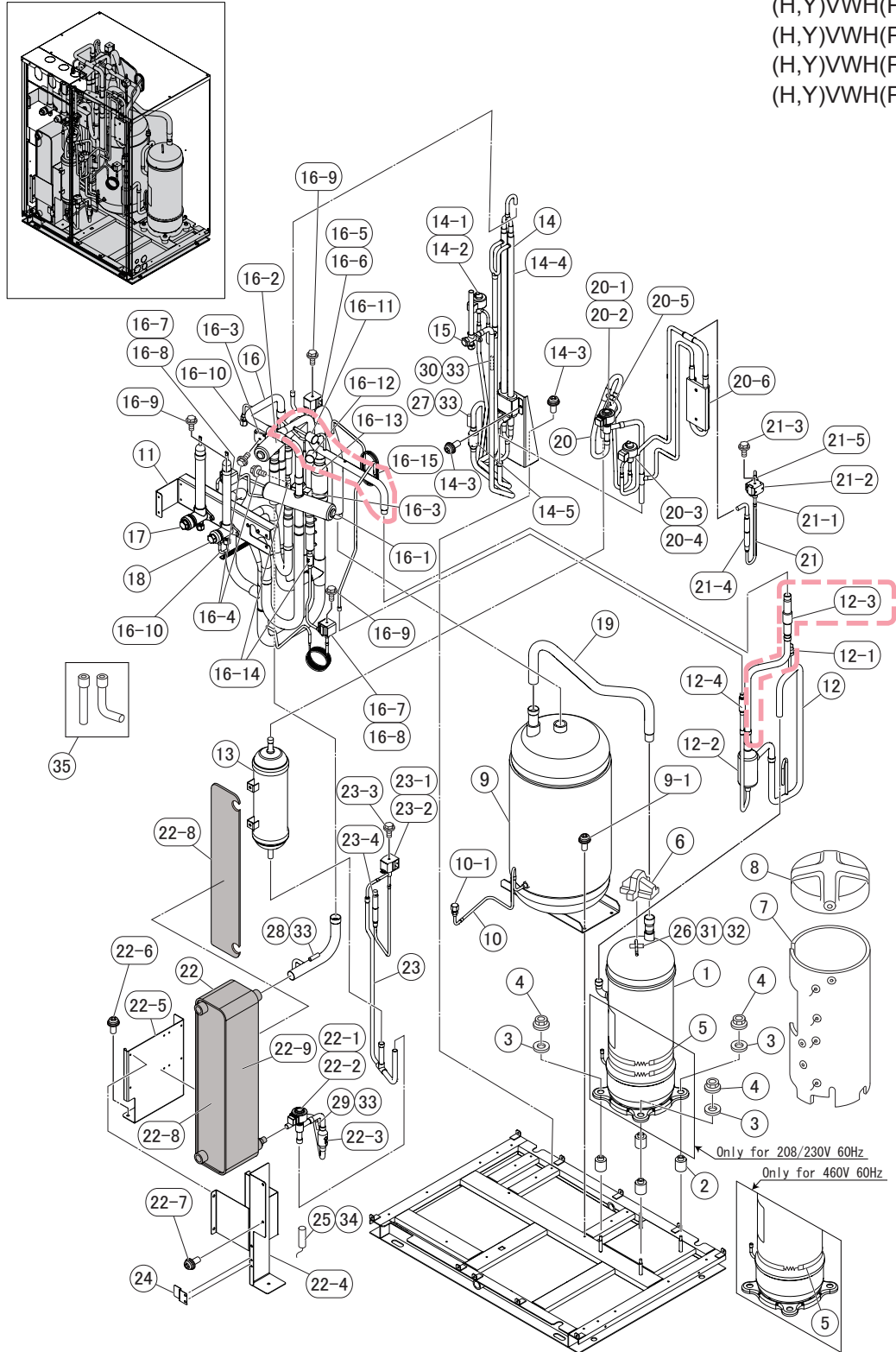
NOTES:

- The parts without order numbers are custom-ordered and not mentioned in the price list.
- When ordering parts, the part name and the drawing number are required.
- Contact your distributor for the delivery date and price of the service parts.

LOCATION OF SERVICE PARTS in the Water Source Unit (VRF Heat Pump and Heat Recovery)

< Refrigerant Cycle >

MODEL: (H,Y)VWH(P,R)072B32S
(H,Y)VWH(P,R)096B32S
(H,Y)VWH(P,R)120B32S
(H,Y)VWH(P,R)072B42S
(H,Y)VWH(P,R)096B42S
(H,Y)VWH(P,R)120B42S



A	Truss Head Tapping Screw		F	Stud Bolt	
B	Round Head Screw		G	Nut	
C	Flat Head Screw		H	Washer	
D	Pan Head Tapping Screw		J	Spring Lock Washer	
E	Hexagon Head Bolt		K	Tooth Lock Washer	

NOTE:

A protective coating like zinc is applied to iron and steel for unspecified materials like a bolt or screw.

NOTES:

- The parts without order numbers are custom-ordered and not mentioned in the price list.
- When ordering parts, the part name and the drawing number are required.
- Contact your distributor for the delivery date and price of the service parts.

SERVICE PARTS LIST for Water Source Unit (VRF Heat Pump and Heat Recovery)

MODEL: (H,Y)VWH(P,R)144B32S, (H,Y)VWH(P,R)168B32S, (H,Y)VWH(P,R)192B32S, (H,Y)VWH(P,R)21632S,
(H,Y)VWH(P,R)144B42S, (H,Y)VWH(P,R)168B42S, (H,Y)VWH(P,R)192B42S, (H,Y)VWH(P,R)21642S

(P0185x-04)

					Voltage			
					208/230V 60Hz		460V 60Hz	
					Qty Per Unit			
No.	Part Name	Replacement Part		Remarks	(H,Y)VWH(P,R)144B32S	(H,Y)VWH(P,R)168B32S (H,Y)VWH(P,R)192B32S (H,Y)VWH(P,R)216B32S	(H,Y)VWH(P,R)144B42S	(H,Y)VWH(P,R)168B42S (H,Y)VWH(P,R)192B42S (H,Y)VWH(P,R)216B42S
		Draw. No.	Order No.					
1	INV Compressor	17F22204E	06954630	MC1, MC2: DB65PHD-A2YC2	2	2	-	-
		17F22204C	06954634	MC1, MC2: DB65PHD-D2YC2	-	-	2	2
2	Vibration Absorber	17D49474A	P17308		8	8	8	8
3	Vibration Absorber	17D21207A	P13109		6	6	6	6
4	Nut	17D49475A	P21245		6	6	6	6
5	Crankcase Heater	H7D10864A	QU076015	CH1: 32W, Belt Heater	2	2	-	-
		H7D10864B	QU076018	CH1: 40W, Belt Heater	-	-	1	1
6	Crankcase Heater	H7D10864A	QU076015	CH2: 32W, Belt Heater	2	2	-	-
		H7D10864B	QU076018	CH2: 40W, Belt Heater	-	-	1	1
7	Rubber Cap	H17B29767A	QU032001		2	2	2	2
8	Sound Proof Cover	H7C06631A	-		1	1	1	1
9	Sound Proof Cover	17F03363A	-		1	1	1	1
10	Sound Proof Cover	H7C06631A	-		1	1	1	1
11	Sound Proof Cover	17F03363A	-		1	1	1	1
12	Accumulator	H7B04872A	QU089046		1	1	1	1
12-1	Special Screw	17G24763A	-		4	4	4	4
13	Oil Container Assy	H7D10713A	-		1	1	1	1
13-1	Access Port	H7C00441A	QU028001		1	1	1	1
14	V Stay Assy	H7D14252A	-		1	1	1	1
15	D-Pipe Assy	H7D09393A	-		1	1	1	1
15-1	Pressure Switch	H7C00447A	QU001002	PSH1: ACB-1UB59	1	1	1	1
15-2	Oil Separator	H7D10432A	-		1	1	1	1
15-3	Check Valve	H7D15154A	QU042012		1	1	1	1
15-4	Strainer	H17D55178A	QU030001		1	1	1	1
16	D-Pipe Assy	H7D09393A	-		1	1	1	1
16-1	Pressure Switch	H7C00447A	QU001002	PSH2: ACB-1UB59	1	1	1	1
16-2	Oil Separator	H7D10432A	-		1	1	1	1
16-3	Check Valve	H7D15154A	QU042012		1	1	1	1
16-4	Strainer	H17D55178A	QU030001		1	1	1	1
17	Receiver	H7C01729A	QU058002		1	1	1	1
18	L-Pipe Assy	H7C07089A	-		1	1	1	1
18-1	Expansion Valve	H17F05654A	QU021031	MVB: UKV-25D174 without Coil	1	1	1	1
18-2	EXPV. Coil	H17C78180C	QU021005	MVB: UKV-U040E or UKV-A035	1	1	1	1
18-3	Special Screw	17G24763A	-	SUS, M5	3	3	3	3
18-4	Double Pipe Assy	H17F05849C	QU041002		1	1	1	1
18-5	Strainer	H17G62700A	QU030004		1	1	1	1
19	Stop Valve	H7C00436B	QU320001	for Liquid Line	1	1	1	1
20	Reversing Valve Assy	H7B04876B	-		1	1	1	1
20-1	Reversing Valve	H17B36157A	QU081019	RVR1: STF-H0712 without Coil	1	1	1	1
20-2	Reversing Valve	H7C03986A	QU081003	RVR2: STF-H0404 without Coil	1	1	1	1
20-3	Coil	H7C03987B	QU081001	RVR1,2: STF-H01AQ2338A1	2	2	2	2
20-4	Special Screw	-	-	for Solenoid Valve (M5), Included in No.20-3	2	2	2	2
20-5	Solenoid Valve	H7C01910A	QU077007	SVA: FDF5A11 without Coil	1	1	1	1

NOTES:

- The parts without order numbers are custom-ordered and not mentioned in the price list.
- When ordering parts, the part name and the drawing number are required.
- Contact your distributor for the delivery date and price of the service parts.

SERVICE PARTS LIST for Water Source Unit (VRF Heat Pump and Heat Recovery)

MODEL: (H,Y)VWH(P,R)144B32S, (H,Y)VWH(P,R)168B32S, (H,Y)VWH(P,R)192B32S, (H,Y)VWH(P,R)21632S,
(H,Y)VWH(P,R)144B42S, (H,Y)VWH(P,R)168B42S, (H,Y)VWH(P,R)192B42S, (H,Y)VWH(P,R)21642S

(P0185x-04)

					Voltage			
					208/230V 60Hz		460V 60Hz	
No.	Part Name	Replacement Part		Remarks	Q'ty Per Unit			
		Draw. No.	Order No.		(H,Y)VVWH(P,R)144B32S	(H,Y)VVWH(P,R)168B32S (H,Y)VVWH(P,R)192B32S (H,Y)VVWH(P,R)216B32S	(H,Y)VVWH(P,R)144B42S	(H,Y)VVWH(P,R)168B42S (H,Y)VVWH(P,R)192B42S (H,Y)VVWH(P,R)216B42S
20-6	Coil	H7C01911A	QU303007	SVA: FQ-A0520D	1	1	1	1
20-7	Solenoid Valve	H7C01910A	QU077007	SVG: TEV-S without Coil	2	2	2	2
20-8	Coil	H7C01911A	QU303007	SVG: TEV-SM0AQ2400A1	2	2	2	2
20-9	Special Screw	17E19003B	P31810	for Solenoid Valve (M4)	3	3	3	3
20-10	Access Port	H7C01396B	QU096001	Pd, Ps	2	2	2	2
20-11	Pressure Sensor (D)	H17B46257A	QU012018	NSK-BH050D-421	1	1	1	1
20-12	Pressure Sensor (S)	H17B47112A	QU012016	NSK-BH020D-421	1	1	1	1
20-13	Strainer	H17G15764B	QU030003		1	1	1	1
20-14	Strainer	H17D55178A	QU030001		2	2	2	2
20-15	Oil Return Pipe Assy	H7D10479A	-		1	1	1	1
20-16	Oil Return Pipe Assy	H7D10480A	-		1	1	1	1
21	Stop Valve	H17F09234A	QU027002	for Gas (Low) Line	1	1	1	1
22	Stop Valve	H17F09233A	QU027001	for Gas (High/Low) Line	1	1	1	1
23	S-Pipe	H7D09111A	-		1	1	1	1
24	S-Pipe	H7D09112A	-		1	1	1	1
25	Expansion Valve Assy	H7C07028A	-		-	-	1	1
		H7C07027A	-		1	1	-	-
25-1	Expansion Valve	H17F07288B	QU021022	MV1: PAM-BBOYGHS-1 without Coil	1	1	1	1
25-2	EXPV. Coil	H17F07287A	QU021006	MV1: PAM-MD12HS-7	1	1	1	1
25-3	Expansion Valve	H17F05654A	QU021031	MV3: UKV-25D174 without Coil	1	1	1	1
25-4	EXPV. Coil	H17C78180A	QU021019	MV3: UKV-U029E or UKV-A027	1	1	1	1
25-5	Strainer	H17G62700A	QU030004		1	1	1	1
25-6	Radiation Plate	H7D14178A	-		1	1	1	1
25-7	Radiation Plate	H7D10520A	-		1	1	1	1
26	RC-Pipe Assy	H7D14177A	-		1	1	1	1
26-1	Solenoid Valve	H7C01910A	QU077007	SVC: FDF5A11 without Coil	1	1	1	1
26-2	Coil	H7C01911A	QU303007	SVC: FQ-A0520D	1	1	1	1
26-3	Special Screw	17E19003B	P31810	for Solenoid Valve (M4)	1	1	1	1
26-4	Check Valve	H7C00440A	QU042002		1	1	1	1
26-5	Strainer	H17G62701A	QU030005		1	1	1	1
27	Plate Heat Exchanger	H7C06767C	-		1	1	1	1
27-1	Expansion Valve	H17F07288B	QU021022	MV4: PAM-BBOYGHS-1 without Coil	1	1	1	1
27-2	EXPV. Coil	H17F07287A	QU021006	MV4: PAM-MD12HS-7	1	1	1	1
27-3	Strainer	H17G62700A	QU030004		1	1	1	1
27-4	HEX Plate	H7D10240A	-		1	1	1	1
27-5	HEX Plate	H7D10241A	-		1	1	1	1
27-6	Special Screw	17G24763A	-		7	7	7	7
27-7	Screw	453H0520	-		2	2	2	2
27-8	HEX Insulation	H7D10583A	-		2	2	2	2
27-9	HEX Insulation	H7D10582C	-		1	1	1	1
28	SVB-Pipe Assy	H7C07013B	-		1	1	1	1
28-1	Solenoid Valve	H7C02884A	QU077010	SVB: TEV-S without Coil	1	1	1	1
28-2	Coil	H7C01911A	QU303007	SVB: TEV-SM0AQ2400A1	1	1	1	1

NOTES:

- The parts without order numbers are custom-ordered and not mentioned in the price list.
- When ordering parts, the part name and the drawing number are required.
- Contact your distributor for the delivery date and price of the service parts.

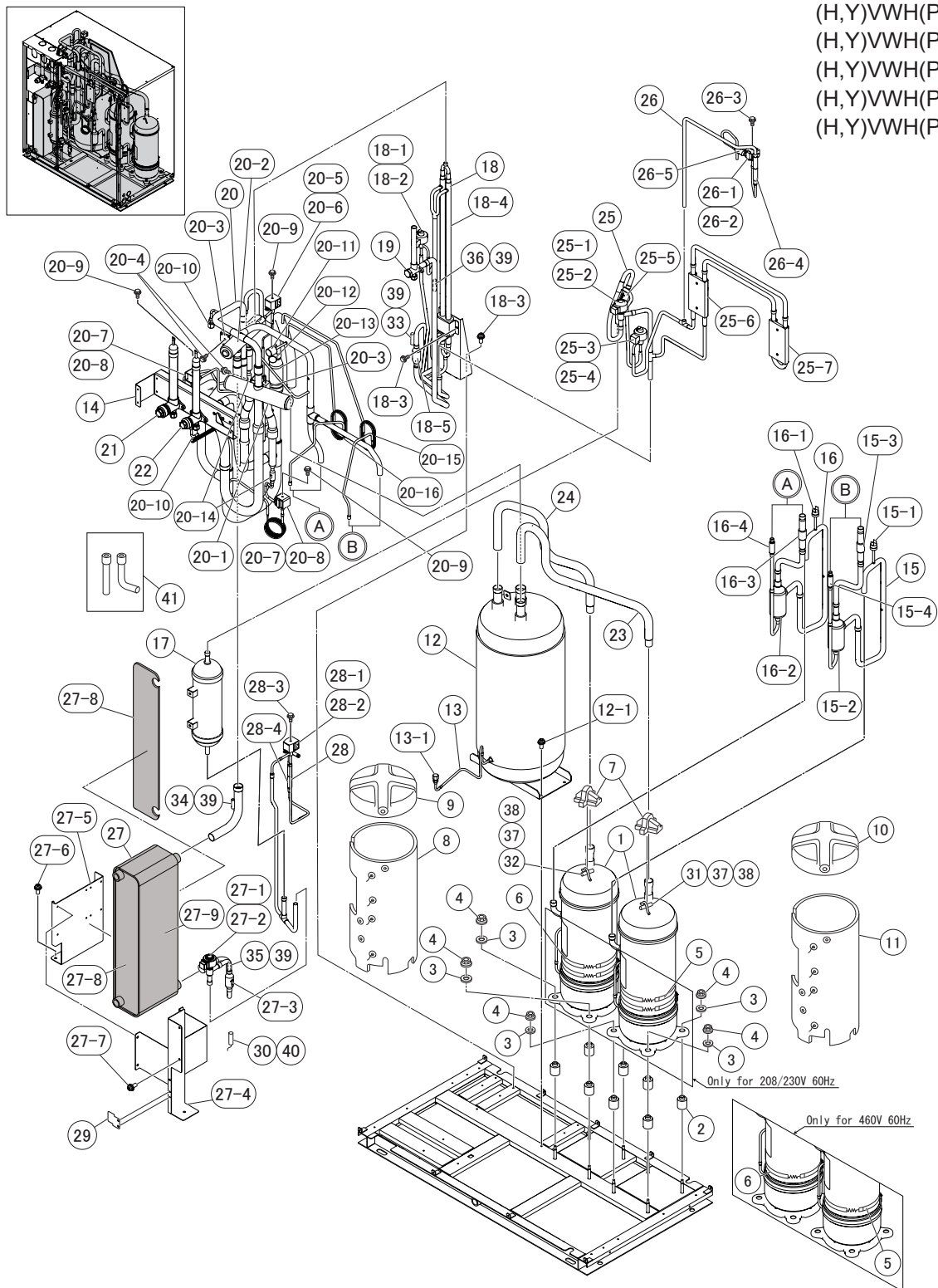
MODEL: (H,Y)VWH(P,R)144B32S, (H,Y)VWH(P,R)168B32S, (H,Y)VWH(P,R)192B32S, (H,Y)VWH(P,R)21632S,
(H,Y)VWH(P,R)144B42S, (H,Y)VWH(P,R)168B42S, (H,Y)VWH(P,R)192B42S, (H,Y)VWH(P,R)21642S

- 11 -

LOCATION OF SERVICE PARTS in the Water Source Unit (VRF Heat Pump and Heat Recovery)

< Refrigerant Cycle >

MODEL: (H,Y)VWH(P,R)144B32S
(H,Y)VWH(P,R)168B32S
(H,Y)VWH(P,R)192B32S
(H,Y)VWH(P,R)216B32S
(H,Y)VWH(P,R)144B42S
(H,Y)VWH(P,R)168B42S
(H,Y)VWH(P,R)192B42S
(H,Y)VWH(P,R)216B42S



A	Truss Head Tapping Screw		F	Stud Bolt	
B	Round Head Screw		G	Nut	
C	Flat Head Screw		H	Washer	
D	Pan Head Tapping Screw		J	Spring Lock Washer	
E	Hexagon Head Bolt		K	Tooth Lock Washer	

NOTE:

A protective coating like zinc is applied to iron and steel for unspecified materials like a bolt or screw.

NOTES:

- The parts without order numbers are custom-ordered and not mentioned in the price list.
- When ordering parts, the part name and the drawing number are required.
- Contact your distributor for the delivery date and price of the service parts.

© 2018 Hitachi-Johnson Controls Air-Conditioning, Inc.

(P0185x-05)

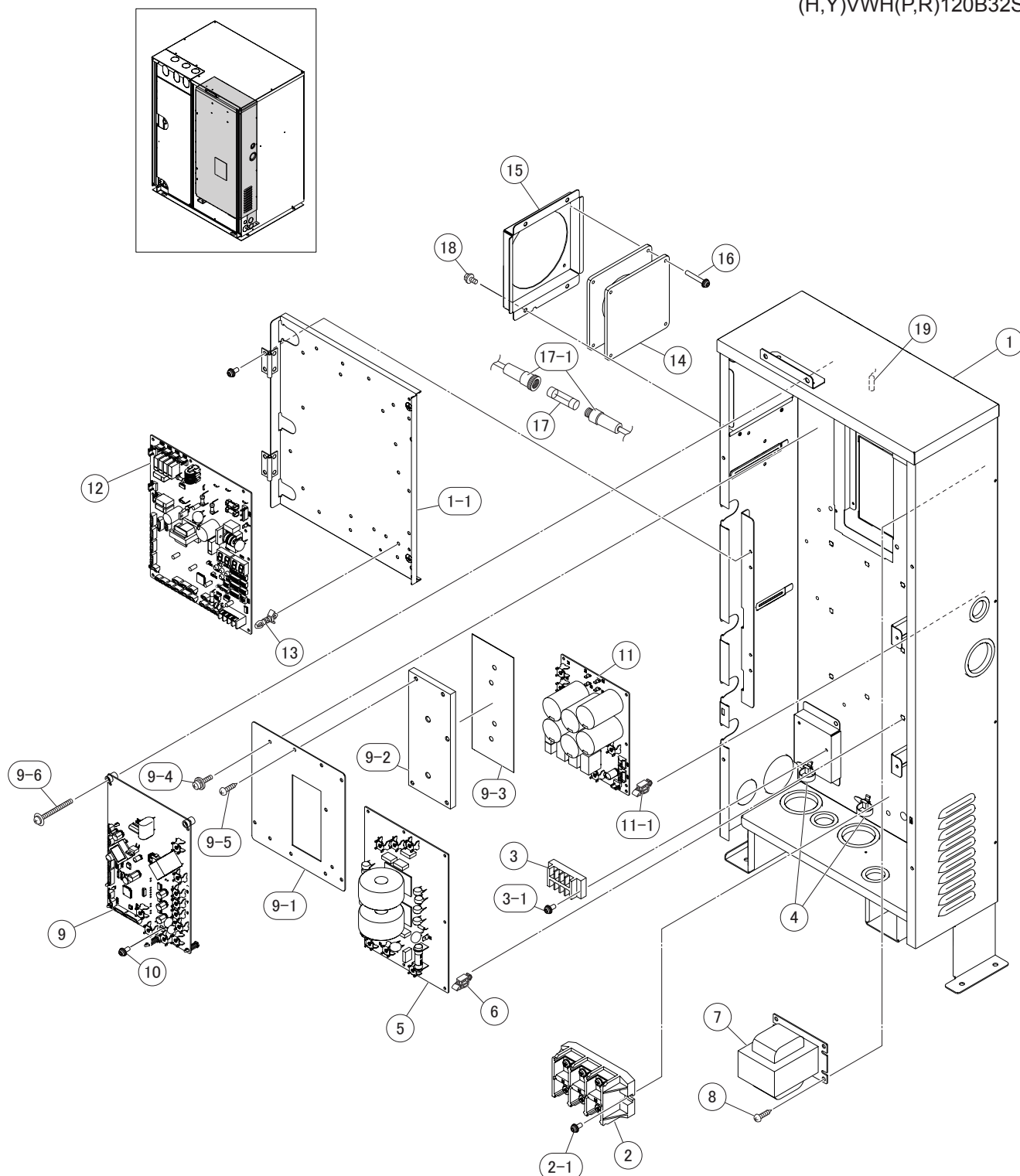
(P0185x-05)

- The parts without order numbers are custom-ordered and not mentioned in the price list.
- When ordering parts, the part name and the drawing number are required.
- Contact your distributor for the delivery date and price of the service parts.

LOCATION OF SERVICE PARTS in the Water Source Unit (VRF Heat Pump and Heat Recovery)

< Electrical Parts > (208/230V 60Hz)

MODEL: (H,Y)VWH(P,R)072B32S
(H,Y)VWH(P,R)096B32S
(H,Y)VWH(P,R)120B32S



A	Truss Head Tapping Screw		F	Stud Bolt	
B	Round Head Screw		G	Nut	
C	Flat Head Screw		H	Washer	
D	Pan Head Tapping Screw		J	Spring Lock Washer	
E	Hexagon Head Bolt		K	Tooth Lock Washer	

NOTE:

A protective coating like zinc is applied to iron and steel for unspecified materials like a bolt or screw.

NOTES:

- The parts without order numbers are custom-ordered and not mentioned in the price list.
- When ordering parts, the part name and the drawing number are required.
- Contact your distributor for the delivery date and price of the service parts.

MODEL: (H,Y)VWH(P,R)072B42S, (H,Y)VWH(P,R)096B42S, (H,Y)VWH(P,R)120B42S

MODEL: (H,Y)VWH(P,R)072B42S, (H,Y)VWH(P,R)096B42S, (H,Y)VWH(P,R)120B42S

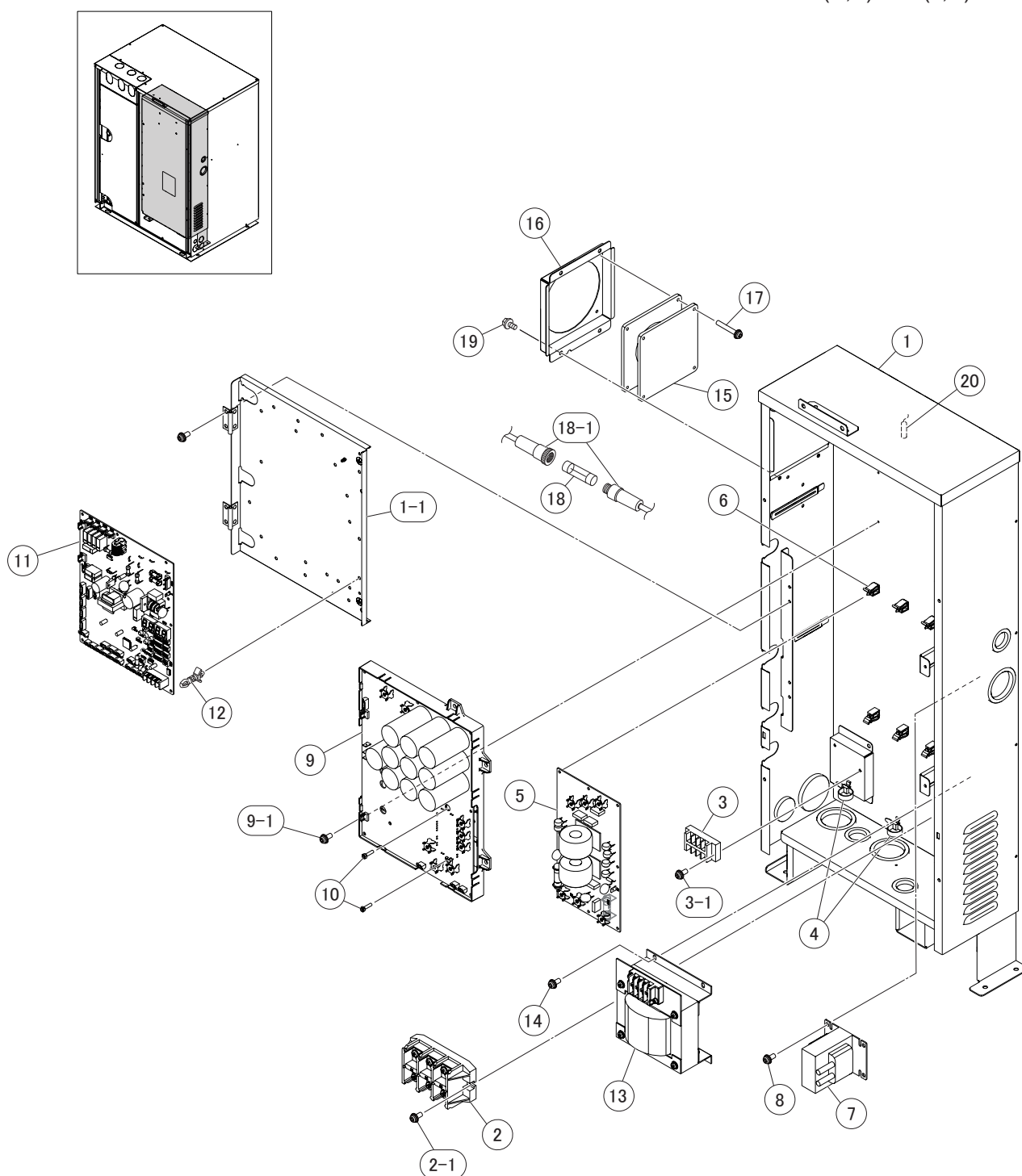
[illegible]

- The parts without order numbers are custom-ordered and not mentioned in the price list.
- When ordering parts, the part name and the drawing number are required.
- Contact your distributor for the delivery date and price of the service parts.

LOCATION OF SERVICE PARTS in the Water Source Unit (VRF Heat Pump and Heat Recovery)

< Electrical Parts > (460V 60Hz)

MODEL: (H,Y)VWH(P,R)072B42S
(H,Y)VWH(P,R)096B42S
(H,Y)VWH(P,R)120B42S



A	Truss Head Tapping Screw		F	Stud Bolt	
B	Round Head Screw		G	Nut	
C	Flat Head Screw		H	Washer	
D	Pan Head Tapping Screw		J	Spring Lock Washer	
E	Hexagon Head Bolt		K	Tooth Lock Washer	

NOTE:

A protective coating like zinc is applied to iron and steel for unspecified materials like a bolt or screw.

NOTES:

- The parts without order numbers are custom-ordered and not mentioned in the price list.
- When ordering parts, the part name and the drawing number are required.
- Contact your distributor for the delivery date and price of the service parts.

(P0185x-07)

Voltage
208/230V 60Hz
Q'ty Per Unit

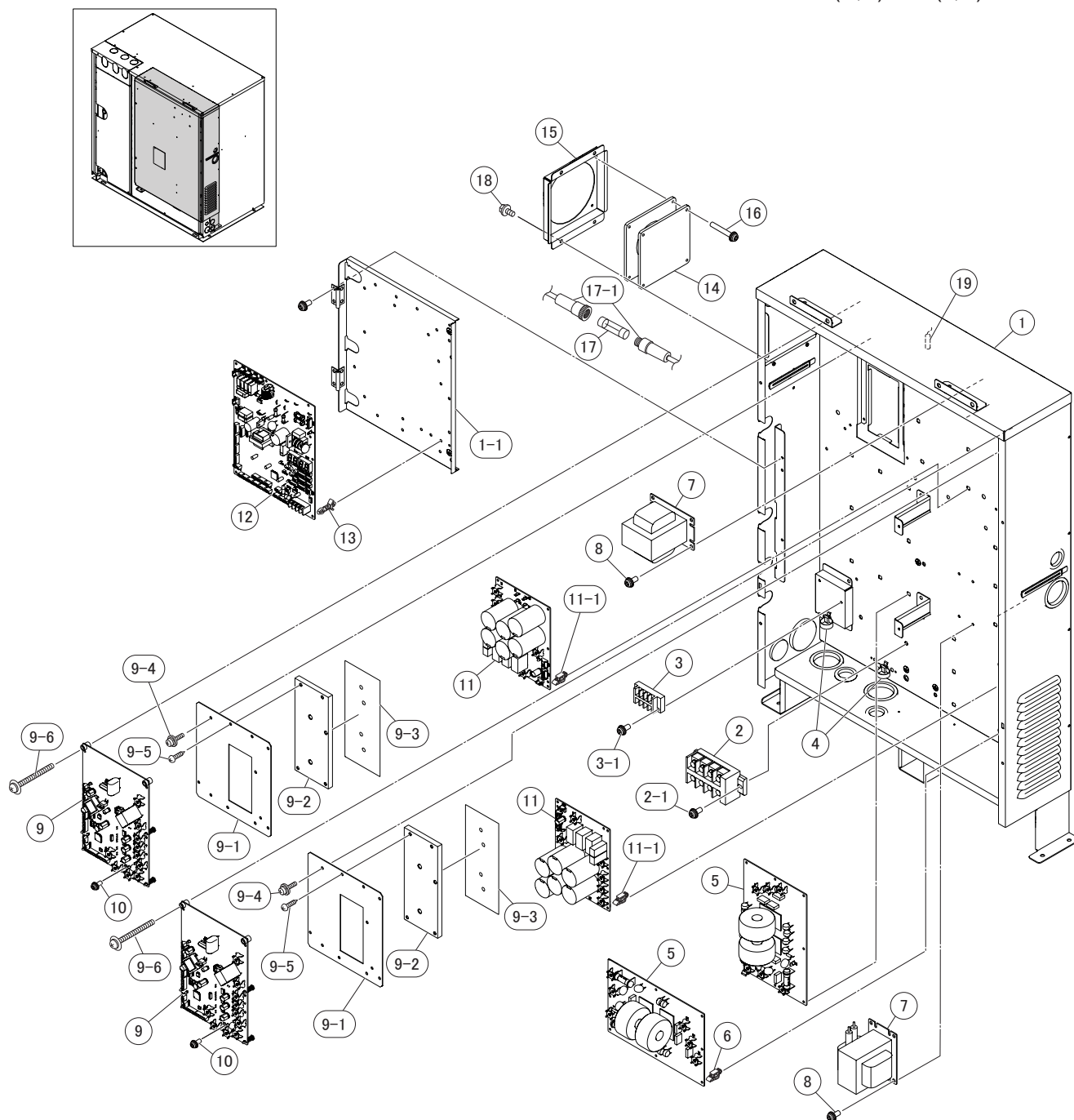
NOTES:

- © 2018 Hitachi-Johnson Controls Air-Conditioning, Inc.

LOCATION OF SERVICE PARTS in the Water Source Unit (VRF Heat Pump and Heat Recovery)

< Electrical Parts > (208/230V 60Hz)

MODEL: (H,Y)VWH(P,R)144B32S
(H,Y)VWH(P,R)168B32S
(H,Y)VWH(P,R)192B32S
(H,Y)VWH(P,R)216B32S



A	Truss Head Tapping Screw		F	Stud Bolt	
B	Round Head Screw		G	Nut	
C	Flat Head Screw		H	Washer	
D	Pan Head Tapping Screw		J	Spring Lock Washer	
E	Hexagon Head Bolt		K	Tooth Lock Washer	

NOTE:

A protective coating like zinc is applied to iron and steel for unspecified materials like a bolt or screw.

NOTES:

- The parts without order numbers are custom-ordered and not mentioned in the price list.
- When ordering parts, the part name and the drawing number are required.
- Contact your distributor for the delivery date and price of the service parts.

(P0185x-08)

Voltage
460V 60Hz
Q'ty Per Unit

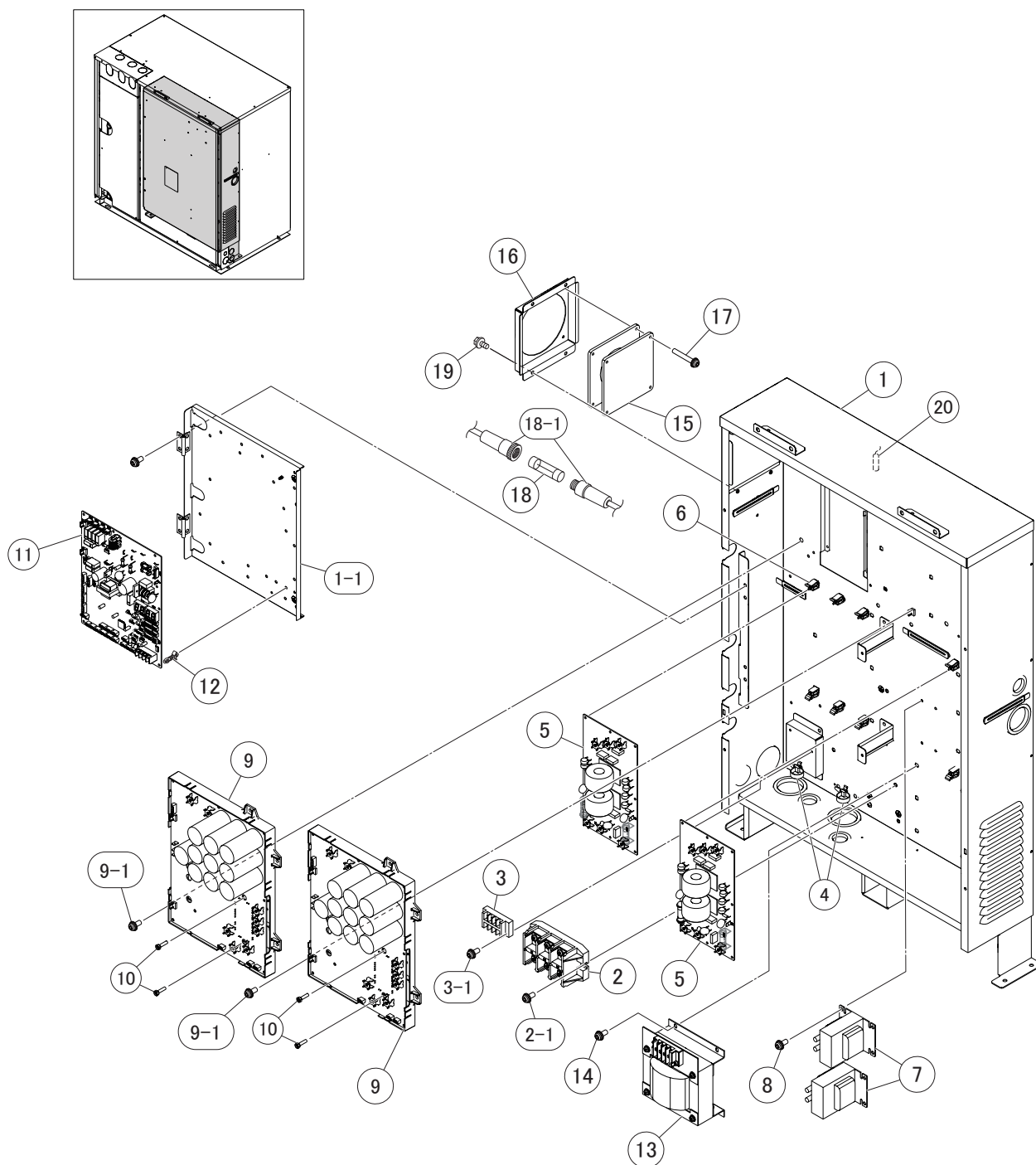
(H,Y)VWH(P,R)144B42S
(H,Y)VWH(P,R)168B42S
(H,Y)VWH(P,R)192B42S
(H,Y)VWH(P,R)216B42S

- The parts without order numbers are custom-ordered and not mentioned in the price list.
- When ordering parts, the part name and the drawing number are required.
- Contact your distributor for the delivery date and price of the service parts.

LOCATION OF SERVICE PARTS in the Water Source Unit (VRF Heat Pump and Heat Recovery)

< Electrical Parts > (460V 60Hz)

MODEL: (H,Y)VWH(P,R)144B42S
(H,Y)VWH(P,R)168B42S
(H,Y)VWH(P,R)192B42S
(H,Y)VWH(P,R)216B42S



A	Truss Head Tapping Screw		F	Stud Bolt	
B	Round Head Screw		G	Nut	
C	Flat Head Screw		H	Washer	
D	Pan Head Tapping Screw		J	Spring Lock Washer	
E	Hexagon Head Bolt		K	Tooth Lock Washer	

NOTE:
A protective coating like zinc is applied to iron and steel for unspecified materials like a bolt or screw.

NOTES:

- The parts without order numbers are custom-ordered and not mentioned in the price list.
- When ordering parts, the part name and the drawing number are required.
- Contact your distributor for the delivery date and price of the service parts.

© 2018 Hitachi-Johnson Controls Air-Conditioning, Inc.