

# SUBMITTAL DATA SHEET

(H,Y)VAHP336B52S

Consists of one (H,Y)VAHP192B52S and one (H,Y)VAHP144B52S module

|                   |               |                 |
|-------------------|---------------|-----------------|
| Job Name:         | Location:     |                 |
| Purchaser:        | Order No.:    |                 |
| Engineer:         | Construction: |                 |
| Submitted To:     | Approval:     |                 |
| Submitted By:     | Date:         | 16 Ton + 12 Ton |
| Unit Designation: | Schedule No.: |                 |

## FEATURES:

- All Inverter Compressors deliver maximum efficiency at part load conditions and provide comfortable individual zone control.
- Large-capacity single outdoor modules (up to 16 Ton) increase flexibility, space and weight savings, and reduce piping and electrical connections.
- Design flexibility with long piping lengths up to 3,280 ft. total and up to 360 ft. vertical distance between Outdoor Units and Indoor Units
- Provide efficient heating down to -13°F and cooling down to 23°F ambient air temperature. (Cooling down to 23°F as standard and down to -10°F with accessories installed)
- Space efficient and lightweight – provides flexibility in system layout and installation
- Maintenance friendly design of Outdoor Unit – all components accessible from the front
- Priority Cooling Control option – prioritizes demand for cooling operation mode over heating operation mode.

(Heat Pump 575V)

|                                     |  |                  | 28 Ton   |
|-------------------------------------|--|------------------|--|
| Model                               | 575V, 3PH, 60Hz  |                  | (H,Y)VAHP336B52S                                 |
| Unit Combination                    | 575V, 3PH, 60Hz  | Unit A<br>Unit B | (H,Y)VAHP192B52S<br>(H,Y)VAHP144B52S             |
| Nominal Capacity                    | Cooling  | Btu/h            | 336,000  |
|                                     | Heating  | Btu/h            | 378,000  |
| Performance *1<br>(Non-duct / Duct) | Rated Cooling Capacity                                   | Btu/h            | 320,000  |
|                                     | EER  | Btu/Wh           | 9.5 / 9.8  |
|                                     | IEER   | Btu/Wh           | 20.8 / 19.1                                      |
|                                     | Rated Heating Capacity                                   | Btu/h            | 360,000  |
|                                     | COP  | W/W              | 3.27 / 3.32                                      |
|                                     | Sound Pressure *3  | dB(A)            | 69   |
| Operating *2<br>Temperature Range   | Cooling  | °F DB [°C DB]    | 23 ~ 122 [-5 ~ 50]                               |
|                                     | Heating  | °F WB [°C WB]    | -13 ~ 59 [-25 ~ 15]                              |
| Refrigerant                         | Type   |                  | R410A  |
|                                     | Factory Charge Amount<br>(Unit A + Unit B)               | lb. [kg]         | 25.6+23.6 [11.6+10.7]                            |
| Refrigerant<br>Piping               | Liquid Pipe  | in. [mm]         | 3/4 [19.05]                                      |
|                                     | Gas Pipe   | in. [mm]         | 1-3/8 [34.93]                                    |
| Connection *2<br>Ratio              | Connection Ratio Range                                   | %                | 130(150) - 55                                    |
|                                     | Number of Indoor Units<br>(Recommended / Maximum)        | Qty.             | 24 / 64  |
| Electrical                          | Minimum Circuit Amps, MCA<br>(Unit A + Unit B)           | A                | 32+24  |
|                                     | Maximum Overcurrent Protection, MOP<br>(Unit A + Unit B) | A                | 40+30  |
| Compressor                          | Compressor Type  |                  | Inverter   |
|                                     | Operation Range  | %                | 3 ~ 100  |
| Fan                                 | Fan Type   |                  | Propeller Fan x4                                 |
|                                     | Airflow Rate<br>(Unit A + Unit B)                        | cfm [m³/min]     | 12284+9037 [348+256]                             |
|                                     | External Static Pressure *6                              | in. WG [Pa]      | 0 ~ 0.32 [0 ~ 80]                                |
| Unit                                | Dimensions (H x W x D)                                   | in. [mm]         | 66-1/4 x 113-3/8 x 30-1/2<br>[1683 x 2880 x 774] |
|                                     | Weight<br>(Unit A + Unit B)                              | lb. [kg]         | 849+728<br>[385+330]                             |

**ACCESSORIES:** (for detailed information, see VRF Engineering Manual and separate documentation for each accessory)

- Piping Kit
- Snow Protection Hood
- Protection Net
- Pipe Adapter
- Low Ambient Kit

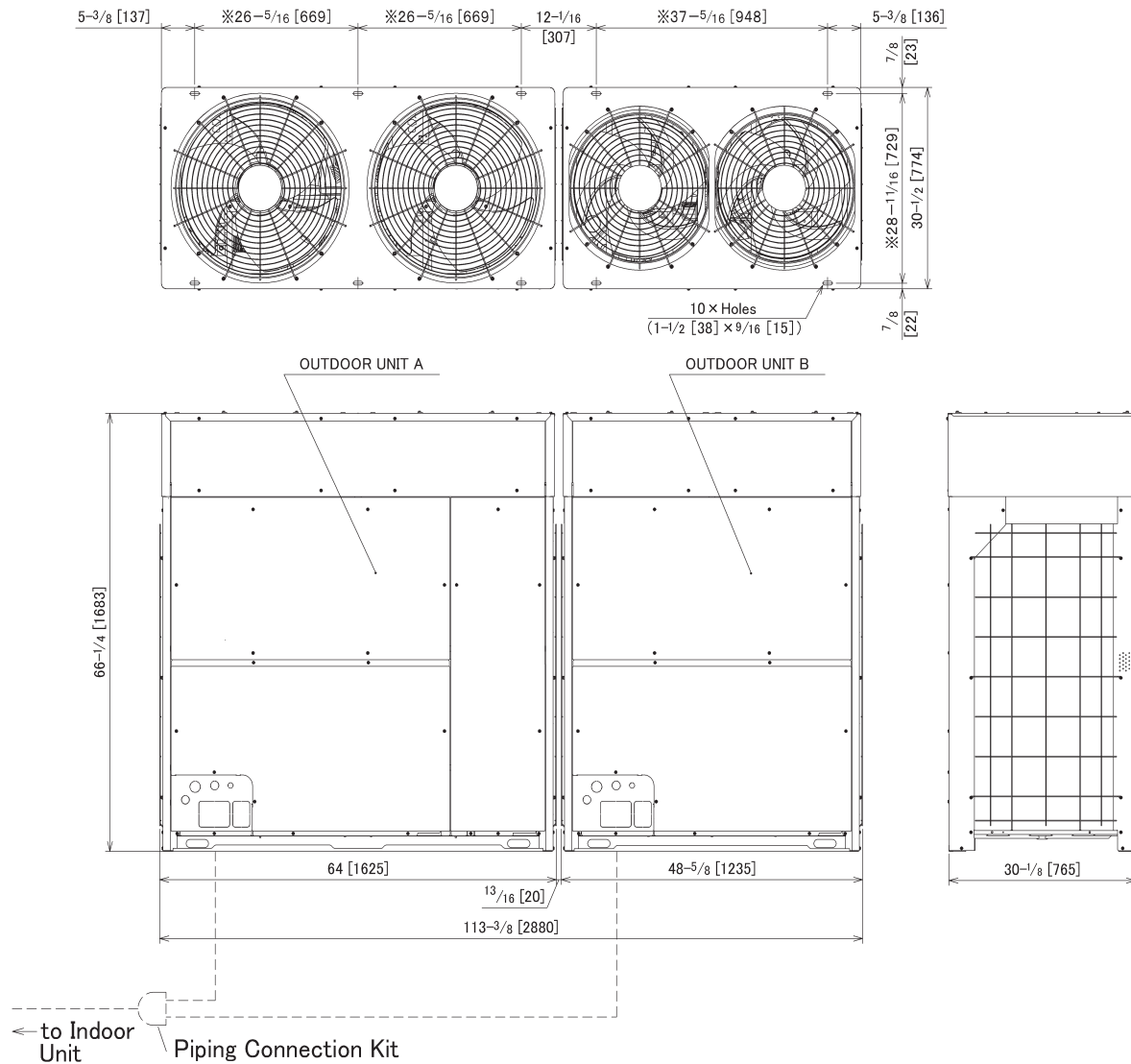
## NOTES:

- \*1. Capacity and efficiency ratings are based on the AHRI 1230 test standard.
- \*2. For more details, refer to the engineering manual.
- \*3. Sound pressure: 3.3 ft. [1 m] from the air outlet side, 4.9 ft. [1.5 m] from floor level.

version 201908

# Heat Pump Model: (Y,H)VAHP336B52S System Dimensions

Unit: inch (mm)



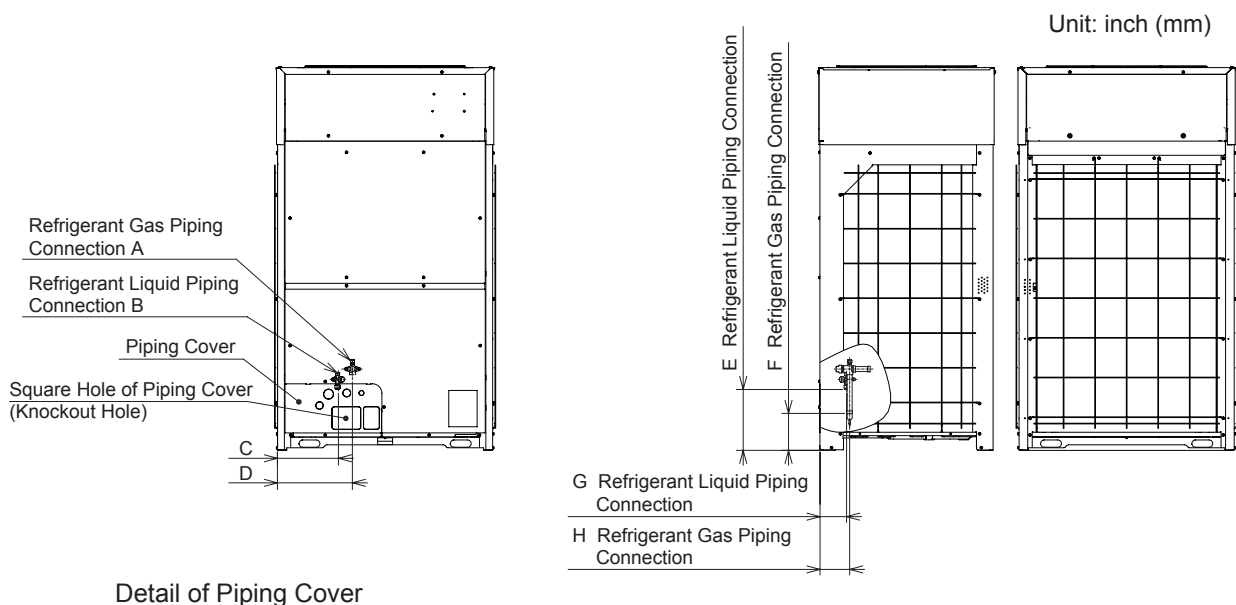
| Outdoor Unit Model | Combination of Base Unit Models |                  |
|--------------------|---------------------------------|------------------|
|                    | OUTDOOR UNIT A                  | OUTDOOR UNIT B   |
| (H,Y)VAHP312B52S   | (H,Y)VAHP168B52S                | (H,Y)VAHP144B52S |
| (H,Y)VAHP336B52S   | (H,Y)VAHP192B52S                | (H,Y)VAHP144B52S |

version 201908

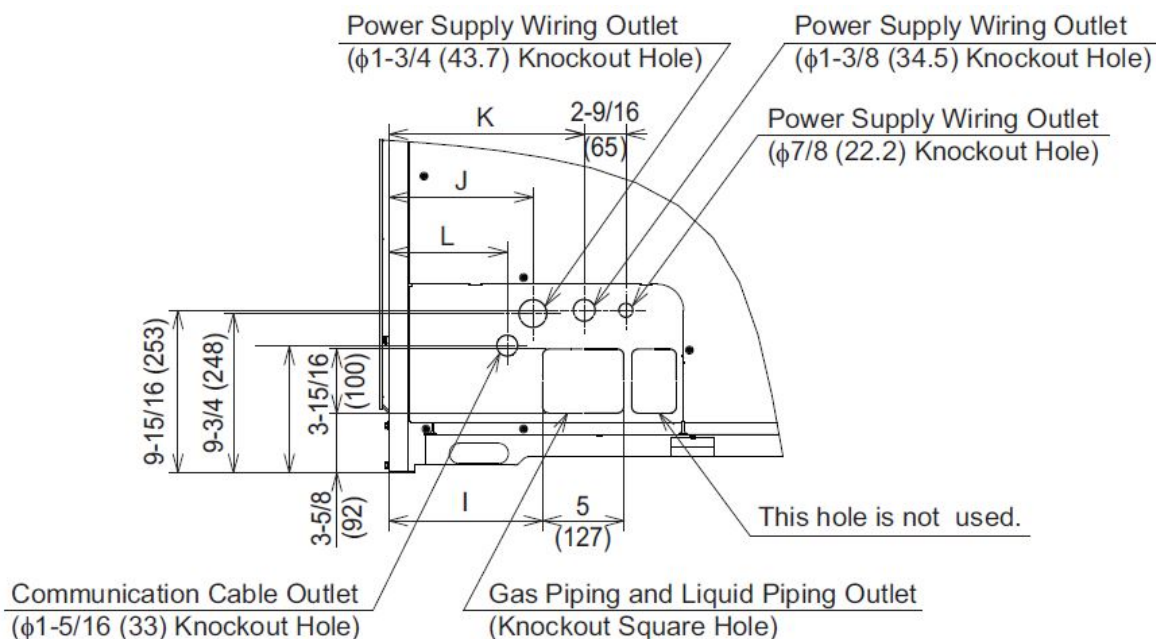
## NOTES:

1. Outdoor unit A is the Main unit and outdoor unit B is the Sub unit. The Main unit is closest in piping to the indoor unit.
2. If outdoor modules have different capacities, the largest capacity unit will be outdoor unit A (Main) and outdoor unit B (Sub) will be the smallest capacity.  $A \geq B$ .
3. Piping connection kits and piping sizes are identified in the "Installation Manual".
4. The dimensions marked with an asterisk (\*) indicate the mounting pitch dimensions for anchor bolts.
5. This drawing shows that there is 13/16 inch [20mm] clearance between the outdoor units. If Snow Protection Hoods are installed on the outdoor units, a 2 inches [50mm] minimum clearance is required.
6. Modifications to the anchoring locations for the outdoor units are required for applications with clearances greater than 13/16 inch [20mm] between outdoor modules.
7. "Dimensional Drawing of Base Unit" is used for dimensions of the piping and wiring outlets.

# Piping Connection Dimensions



Detail of Piping Cover



## Refrigerant Piping Connection and Wiring Outlet

| Model | Gas               | Liquid          | A                 | B               | C                | D                | E                | F               | G               | H               | I                | J               | K              | L               |
|-------|-------------------|-----------------|-------------------|-----------------|------------------|------------------|------------------|-----------------|-----------------|-----------------|------------------|-----------------|----------------|-----------------|
| 72    | φ7/8<br>(22.2)    | φ1/2<br>(12.7)  | φ7/8<br>(22.2)    | φ3/8<br>(9.52)  | 10-3/8<br>(264)  | 13-1/16<br>(331) | 10-9/16<br>(268) | 6-7/16<br>(163) | 4-5/8<br>(117)  | 5-3/16<br>(131) | 9-7/16<br>(240)  | 8-7/8<br>(225)  | 12<br>(305)    | 7-5/16<br>(185) |
| 96    | φ7/8<br>(22.2)    | φ1/2<br>(12.7)  |                   |                 |                  |                  |                  |                 |                 |                 |                  |                 |                |                 |
| 120   | φ1-1/8<br>(28.58) | φ1/2<br>(12.7)  | φ1<br>(25.4)      | φ1/2<br>(12.7)  | 6-7/8<br>(174)   | 9-7/16<br>(239)  | 10-3/8<br>(263)  | 6-5/16<br>(160) | 4-7/16<br>(112) | 5-1/8<br>(130)  | 5-13/16<br>(147) | 5-3/16<br>(132) | 8-3/8<br>(212) | 3-5/8<br>(92)   |
| 144   | φ1-1/8<br>(28.58) | φ5/8<br>(15.88) |                   |                 |                  |                  |                  |                 |                 |                 |                  |                 |                |                 |
| 168   | φ1-1/8<br>(28.58) | φ5/8<br>(15.88) | φ1-1/8<br>(28.58) | φ5/8<br>(15.88) | 6-15/16<br>(177) | 9-7/16<br>(239)  | 10-3/16<br>(259) | 6-5/16<br>(160) | 5-3/16<br>(132) | 6<br>(152)      | 5-13/16<br>(147) | 5-3/16<br>(132) | 8-3/8<br>(212) | 3-5/8<br>(92)   |
| 192   | φ1-1/8<br>(28.58) | φ5/8<br>(15.88) |                   |                 |                  |                  |                  |                 |                 |                 |                  |                 |                |                 |



version 201908

Product Model: (H,Y)VAHP336B52S  
Specifications subject to change