

# SUBMITTAL DATA SHEET

0.5 RT TIWM006B21S

Non-Ducted Wall Mount Indoor Unit

<b>Job Name:</b>			<b>Location:</b>		
<b>Purchaser:</b>			<b>Order No.:</b>		
<b>Engineer:</b>					
<b>Submitted To:</b>	<b>For:</b>	<b>Ref:</b>	<b>Approval:</b>	<b>Construction:</b>	
<b>Submitted By:</b>			<b>Date:</b>		
<b>Unit Designation:</b>			<b>Schedule No.:</b>	<b>Model No.:</b>	

## FEATURES:

- Removable front panel for easy cleaning.
- Optional wireless controller and built-in wireless sensor
- Optional condensate pump

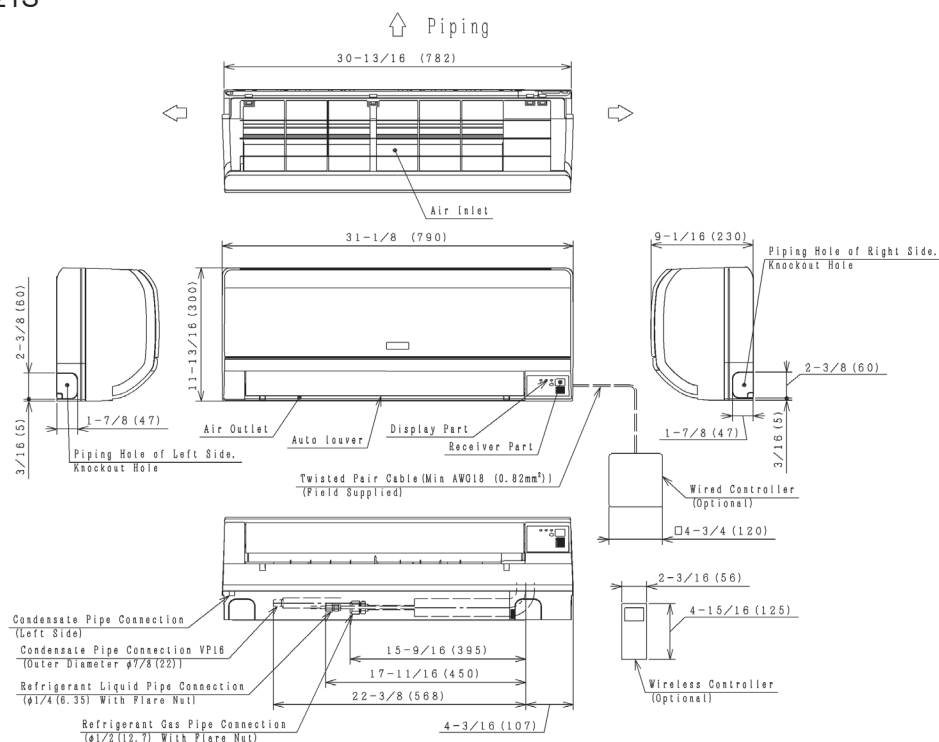


## ACCESSORY:

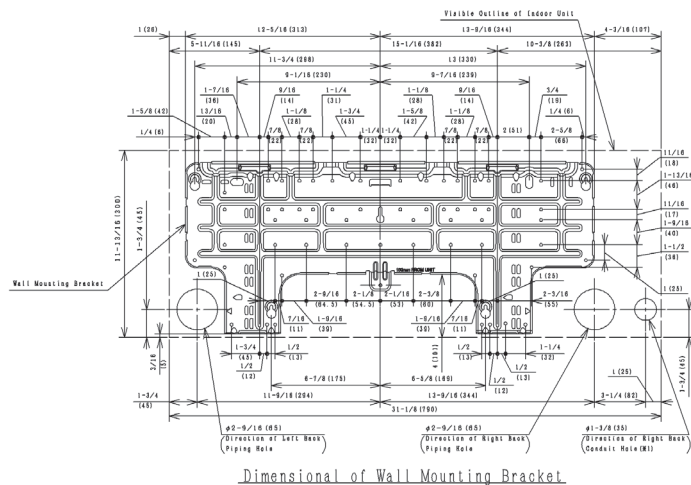
Strainer Kit MSF-NP(63)A

Model Name				TIWM006B21S	
Power Supply				208/230V 1PH 60Hz	
Nominal Capacity	Cooling	Btu/h	(kW)	6000	(1.8)
	Heating	Btu/h	(kW)	6700	(2.0)
Power Consumption	Cooling	W		30	
	Heating	W		30	
Dimension	Height	in	(mm)	11-13/16	(300)
	Width	in	(mm)	31-1/8	(790)
	Depth	in	(mm)	9-1/16	(230)
Net Weight		lb	(kg)	22	(10)
Refrigerant		-		R410A	
Refrigerant Piping	Gas Line	in	( $\phi$ mm)	1/2	(12.70)
	Liquid Line	in	( $\phi$ mm)	1/4	(6.35)
Min Circuit Amps		A		0.3	
Maximum Fuse Size		A		15	
Fan Motor Drive		-		DC $\times$ 1	
Air Flow Rate	Hi2	cfm	(m3/min)	353	(10)
	Hi	cfm	(m3/min)	282	(8)
	Me	cfm	(m3/min)	247	(7)
	Lo	cfm	(m3/min)	229	(6.5)
Air Filter				Polypropylene	
Sound Pressure Level	Hi2	dB(A)		39	
	Hi	dB(A)		35	
	Me	dB(A)		32	
	Lo	dB(A)		30	

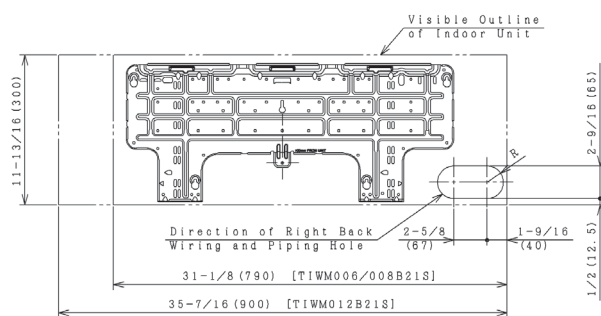
Non-Ducted Wall Mount Indoor Unit  
Model: TIWM006B21S



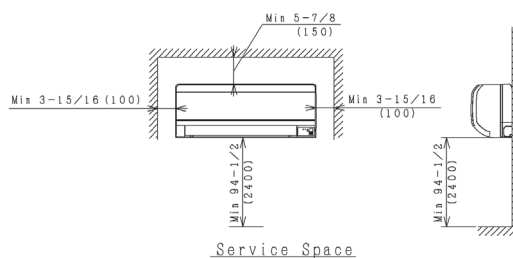
### Opening Direction Option 1:



### Opening Direction Option 2:



### Dimensional of Wall Mounting Bracket



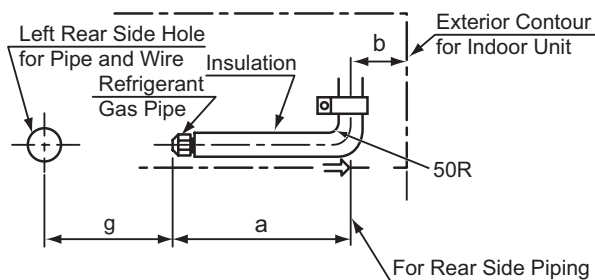
NOTES:

1. Removal of the condensate pipe is possible from either side of the knockout holes. If using the left side, install a condensate hose to the condensate pipe connection at the left side.
2. Make sure there is no gap at the center position of the bracket and the unit. Mount them according to the figure above.

## Piping Connection Dimensions

If the pipe is connected toward the rear side, position the refrigerant piping as follows.

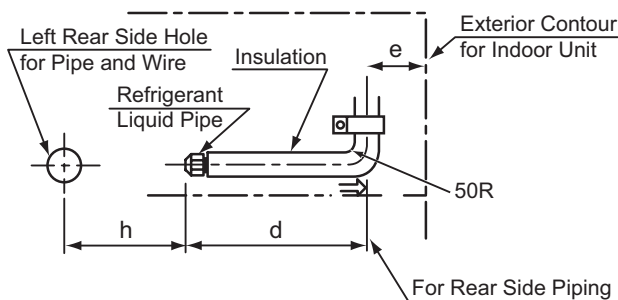
### Gas Pipe



Unit: inch (mm)

Model	Gas Piping			
	Diameter	a	b	g
TIWM006B21S	1/2	15-9/16	4-3/16	9-9/16
TIWM008B21S	(12.7)	(395)	(107)	(243)
TIWM012B21S	1/2	15-9/16	4-3/16	10-5/16
	(12.7)	(395)	(107)	(262)
TIWM015B21S	1/2	18-7/8	5-9/16	18-9/16
	(12.7)	(480)	(141)	(471)
TIWM018B21S	5/8	18-7/8	5-9/16	18-9/16
TIWM024B21S	(15.88)	(480)	(141)	(471)
TIWM030B21S				

### Liquid Pipe

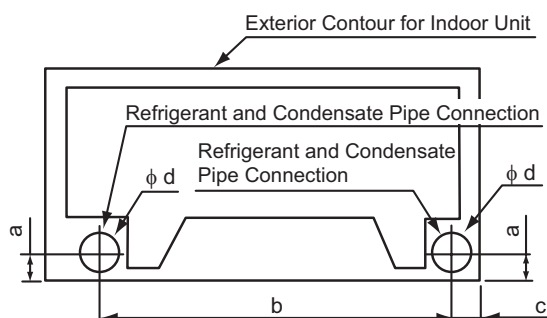


Unit: inch (mm)

Model	Liquid Piping			
	Diameter	d	e	h
TIWM006B21S	1/4	17-11/16	4-3/16	7-3/8
TIWM008B21S	(6.35)	(450)	(107)	(188)
TIWM012B21S	1/4	17-11/16	4-3/16	8-1/8
	(6.35)	(450)	(107)	(207)
TIWM015B21S	1/4	21-1/4	5-9/16	16-7/16
	(6.35)	(540)	(141)	(418)
TIWM018B21S	3/8	21-1/4	5-9/16	16-7/16
TIWM024B21S	(9.52)	(540)	(141)	(418)
TIWM030B21S				

1. Do not twist the pipes when connecting them.
2. Use the proper bending equipment to bend piping as needed.  
If fashioning 1/4-inch diameter piping by hand, hold tightly at the bending radius and proceed with the bending operation.
3. In case of piping is connected toward rear side, please refer to installation manual.

For the pipe installation embedded in the wall, the positions for piping are as follows.



Unit: inch (mm)

Model	a	b	c	φd
TIWM006B21S	1-3/4	25-1/8	4-3/16	2-9/16
TIWM008B21S	(45)	(638)	(107)	(65)
TIWM012B21S	1-3/4	25-7/8	4-3/16	2-9/16
	(45)	(657)	(107)	(65)
TIWM015B21S	1-5/8	37-7/16	5-9/16	3-1/8
TIWM018B21S	(42)	(951)	(141)	(80)
TIWM024B21S				
TIWM030B21S				

Version 201810

