

# SUBMITTAL DATA SHEET

1.0 RT TIWM012B22S

Non-Ducted Wall Mount Indoor Unit

Job Name:	Location:
Purchaser:	Order No:
Engineer:	GC:
Submitted To:	Approval:
Submitted By:	Date:
Unit Designation:	Schedule/Model No:

## FEATURES:

- Removable front panel for easy cleaning.
- Optional wireless controller and built-in wireless sensor
- Optional condensate pump



## ACCESSORY:

Strainer Kit: MSF-NP63A

Tonnage		1.0 Ton
Model		TIWM012B22S
Indoor Unit Power Supply		AC 1Phase, 208/230V, 60Hz
Nominal Cooling Capacity <sup>1</sup>	Btu/h (kW)	12,000 (3.5)
Nominal Heating Capacity <sup>1</sup>	Btu/h (kW)	13,500 (4.0)
Sound Pressure Level <sup>2</sup> (Overall A Scale)	dB	46-40-36-33
Outer Dimensions		
Height	in. (mm)	11-13/16 (300)
Width	in. (mm)	35-7/16 (900)
Depth	in. (mm)	9-1/16 (230)
Net Weight	lbs. (kg)	24 (11)
Refrigerant		R410A
Indoor Fan		
Airflow Rate (Hi2-Hi-Me-Lo)	cfm (m <sup>3</sup> /min.)	494-388-318-265 (14-11-9-7.5)
Motor Nominal Output		38
Connections		
Refrigerant Piping		Flare-Nut Connection (with Flare Nuts)
Liquid Line	in. (mm)	1/4 (6.35)
Gas Line	in. (mm)	1/2 (12.70)
Condensate Drain		
OD	in. (mm)	7/8 (22)

## NOTES:

\*1 Nominal capacity is based on combinations within the VRF system and the following conditions;

### Cooling Operation Conditions

Indoor Air Inlet Temperature: 80°F (26.7°C)DB

67°F (19.4°C)WB

Outdoor Air Inlet Temperature: 95°F (35.0°C)DB

Piping Length: 24.6in. (7.5m)

Piping Lift: 0ft. (0m)

### Heating Operation Conditions

Indoor Air Inlet Temperature: 70°F (21.1°C)DB

Outdoor Air Inlet Temperature: 47°F (8.3°C)DB

43°F (6.1°C)WB

\*2 Sound pressure level is based on following conditions;

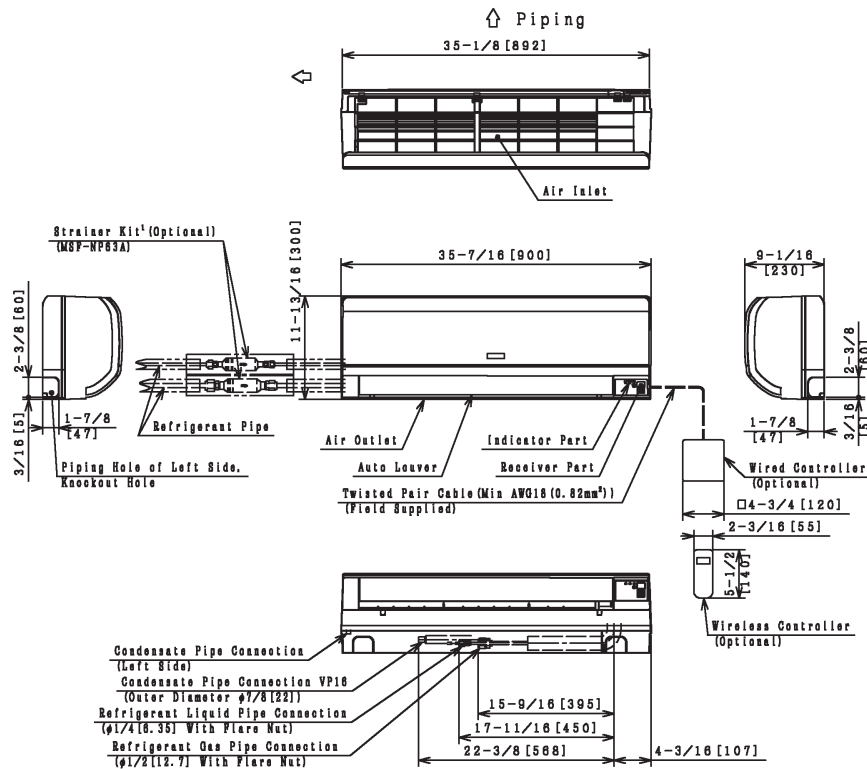
3.3ft (1m) Front of the Unit and 3.3ft (1m) Below the Unit..

The above data was measured in an anechoic chamber so that reflected sound should be taken into consideration in the field.

Non-Ducted Wall Mount Indoor  
Unit Model: TIWM012B22S

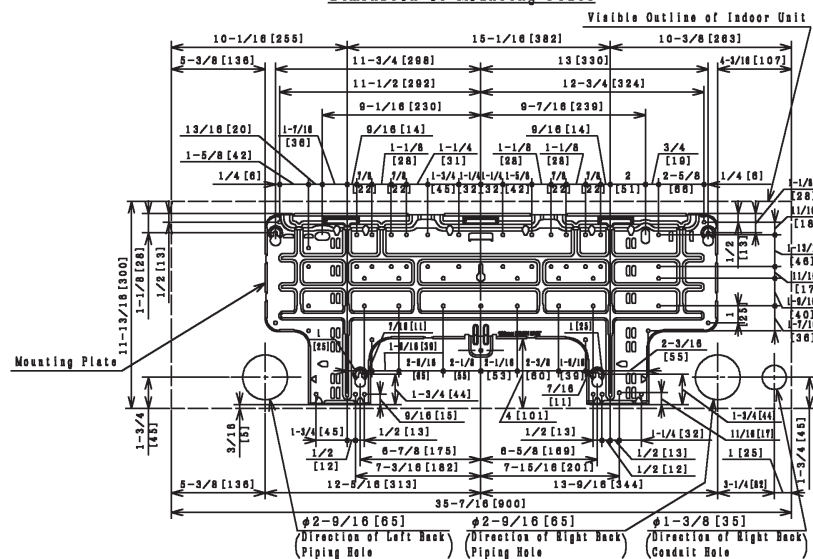
## System Dimensions

Unit: inch (mm)

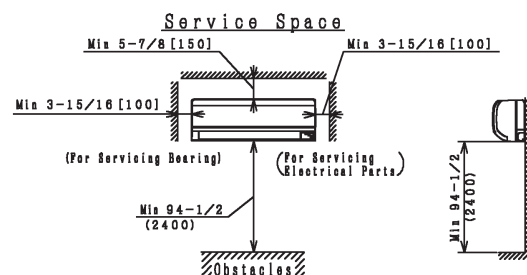
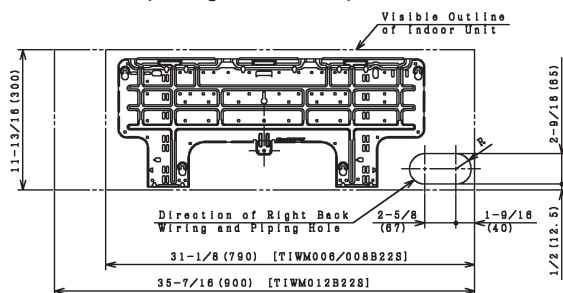


Opening Direction Option 1:

### Dimension of Mounting Plate



Opening Direction Option 2:



version 201910

### NOTES:

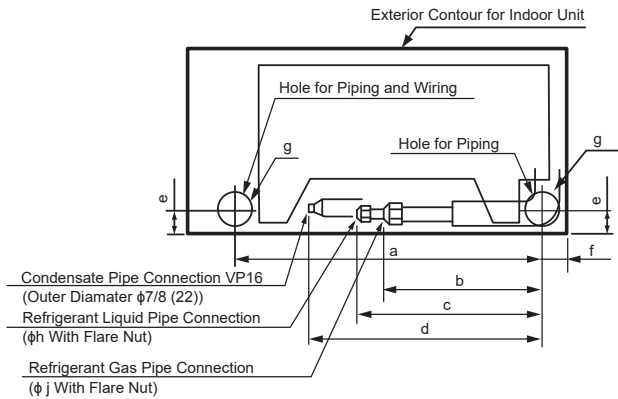
1. Attach strainer kit to refrigerant pipe closest to the unit when integrating wall mount type indoor unit into VRF system. The strainer kit is an option. However, if the installation environment is not clean, then the strainer kit is required.
2. Install condensate piping from either the left or right side of the knockout holes on the unit. In case of the left side, mount a condensate hose to condensate pipe connection of the left side.
3. Taking out of refrigerant pipe from the right bottom side and right side of the unit are not available.

## Piping Connection Dimensions

For the pipe installation embedded in the wall

TIWM012B22S

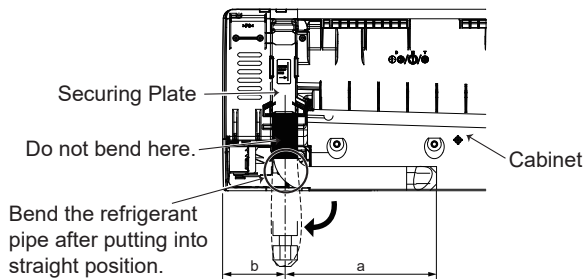
Unit: inch (mm)



View from Front Side for Indoor Unit

Item	TIWM012B22S
a	25-7/8 (657)
b	15-9/16 (395)
c	17-11/16 (450)
d	22-3/8 (568)
e	1-3/4 (45)
f	4-3/16 (107)
g	2-9/16 (65)
h	1/4 (6.35)
j	1/2 (12.7)

For the rear side installation



Unit: Inch (mm)

Item	TIWM012B22S	
	Liquid Piping	Gas Piping
a	17-11/16 (450)	15-9/16 (395)
b	4-3/16 (107)	4-3/16 (107)

