

# SUBMITTAL DATA SHEET

2.5 RT TIWM030B21S

Non-Ducted Wall Mount Indoor Unit

|                          |             |             |                      |                      |  |
|--------------------------|-------------|-------------|----------------------|----------------------|--|
| <b>Job Name:</b>         |             |             | <b>Location:</b>     |                      |  |
| <b>Purchaser:</b>        |             |             | <b>Order No.:</b>    |                      |  |
| <b>Engineer:</b>         |             |             |                      |                      |  |
| <b>Submitted To:</b>     | <b>For:</b> | <b>Ref:</b> | <b>Approval:</b>     | <b>Construction:</b> |  |
| <b>Submitted By:</b>     |             |             | <b>Date:</b>         |                      |  |
| <b>Unit Designation:</b> |             |             | <b>Schedule No.:</b> | <b>Model No.:</b>    |  |

## FEATURES:

- Removable front panel for easy cleaning.
- Optional wireless controller and built-in wireless sensor
- Optional condensate pump



## ACCESSORY:

Strainer Kit MSF-NP(112)A

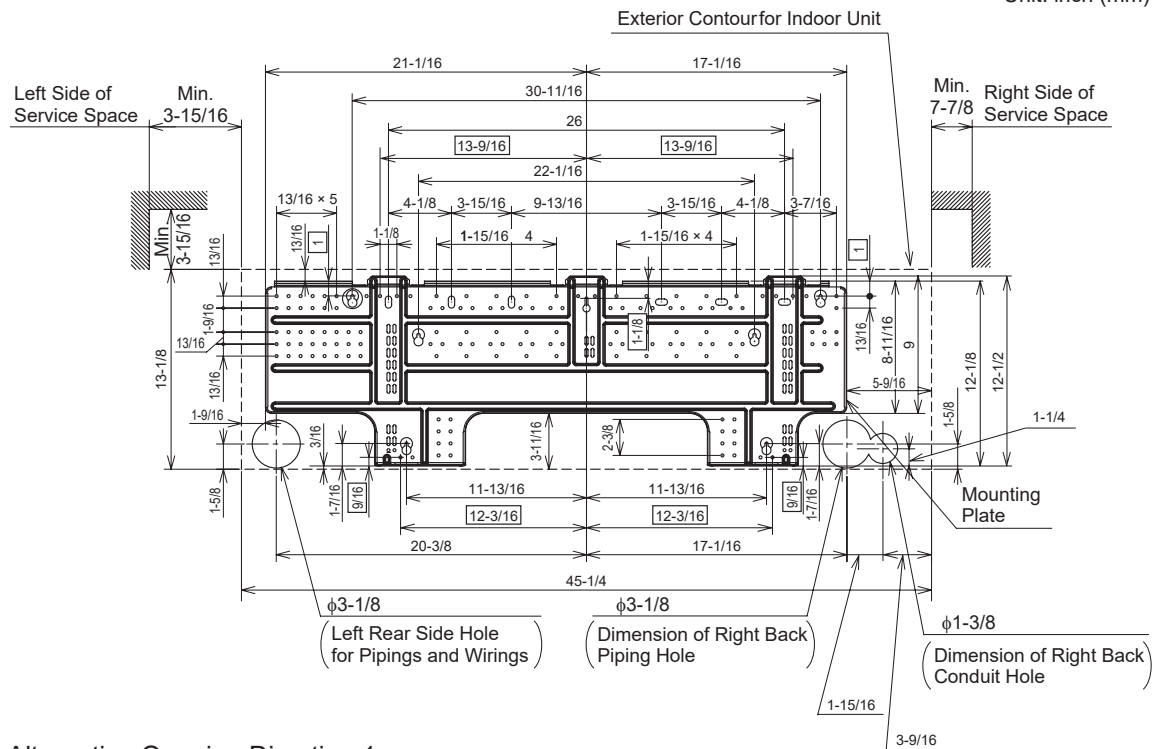
|                      |             |       |              |                   |         |
|----------------------|-------------|-------|--------------|-------------------|---------|
| Model Name           |             |       |              | TIWM030B21S       |         |
| Power Supply         |             |       |              | 208/230V 1PH 60Hz |         |
| Nominal Capacity     | Cooling     | Btu/h | (kW)         | 30000             | (8.8)   |
|                      | Heating     | Btu/h | (kW)         | 34000             | (10.0)  |
| Power Consumption    | Cooling     | W     |              | 90                |         |
|                      | Heating     | W     |              | 90                |         |
| Dimension            | Height      | in    | (mm)         | 13-1/8            | (333)   |
|                      | Width       | in    | (mm)         | 45-1/4            | (1150)  |
|                      | Depth       | in    | (mm)         | 9-5/8             | (245)   |
| Net Weight           |             | lb    | (kg)         | 37                | (17)    |
| Refrigerant          |             | -     |              | R410A             |         |
| Refrigerant Piping   | Gas Line    | in    | ( $\phi$ mm) | 5/8               | (15.88) |
|                      | Liquid Line | in    | ( $\phi$ mm) | 3/8               | (9.52)  |
| Min Circuit Amps     |             | A     |              | 0.7               |         |
| Maximum Fuse Size    |             | A     |              | 15                |         |
| Fan Motor Drive      |             | -     |              | DC $\times$ 1     |         |
| Air Flow Rate        | Hi2         | cfm   | (m3/min)     | 777               | (22)    |
|                      | Hi          | cfm   | (m3/min)     | 671               | (19)    |
|                      | Me          | cfm   | (m3/min)     | 600               | (17)    |
|                      | Lo          | cfm   | (m3/min)     | 530               | (15)    |
| Air Filter           |             |       |              | Polypropylene     |         |
| Sound Pressure Level | Hi2         | dB(A) |              | 51                |         |
|                      | Hi          | dB(A) |              | 49                |         |
|                      | Me          | dB(A) |              | 46                |         |
|                      | Lo          | dB(A) |              | 41                |         |

## System Dimensions

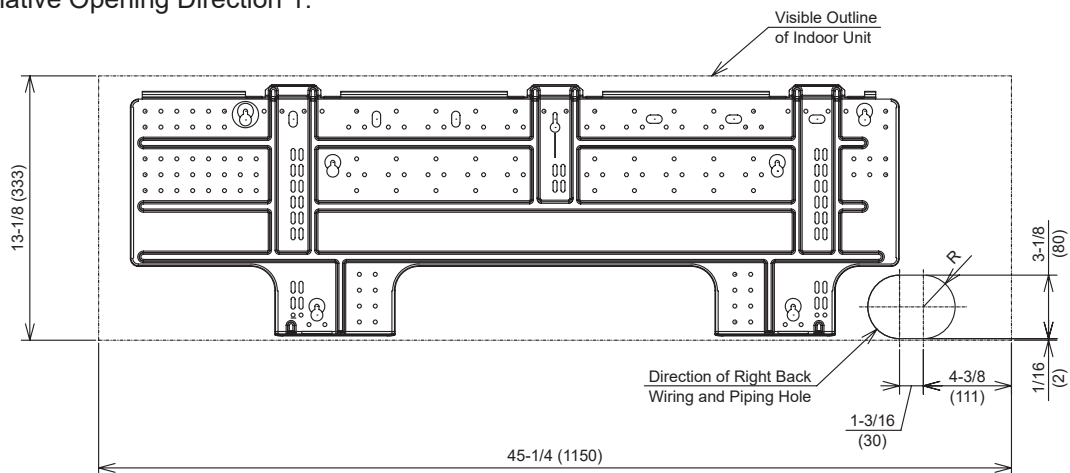
### Non-Ducted Wall Mount Indoor

Unit Model: TIWM030B21S

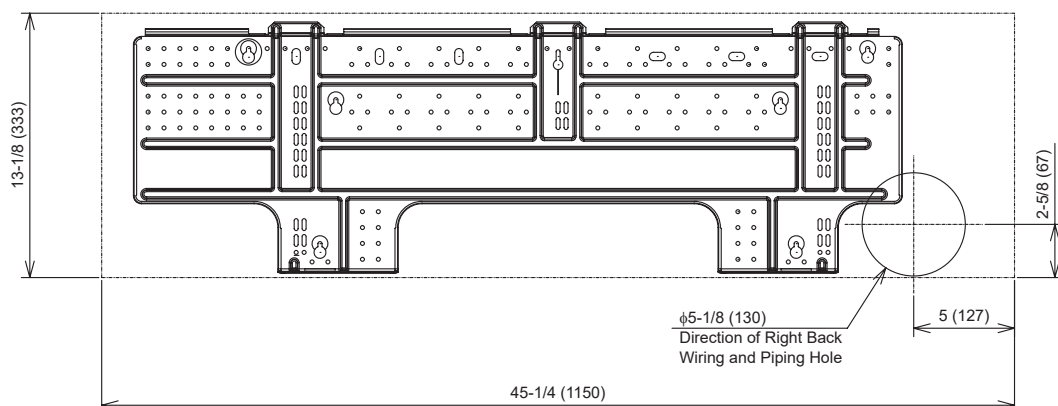
Unit: inch (mm)



### Alternative Opening Direction 1:



### Alternative Opening Direction 2:

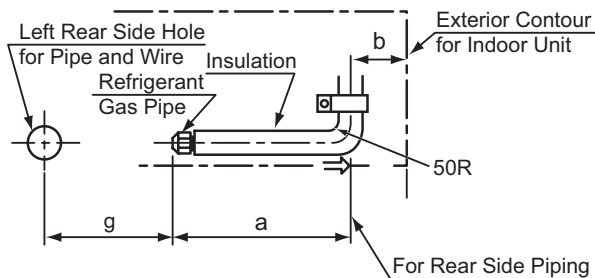


Version 201810

## Piping Connection Dimensions

If the pipe is connected toward the rear side, position the refrigerant piping as follows.

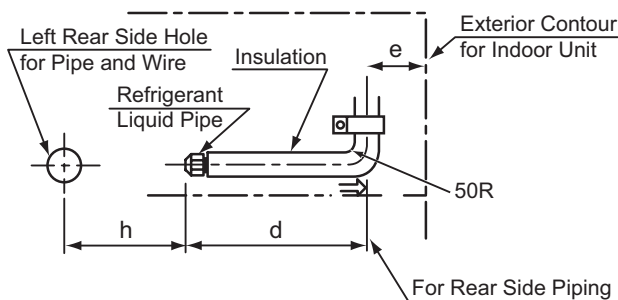
### Gas Pipe



Unit: inch (mm)

| Model       | Gas Piping |         |        |         |
|-------------|------------|---------|--------|---------|
|             | Diameter   | a       | b      | g       |
| TIWM006B21S | 1/2        | 15-9/16 | 4-3/16 | 9-9/16  |
| TIWM008B21S | (12.7)     | (395)   | (107)  | (243)   |
| TIWM012B21S | 1/2        | 15-9/16 | 4-3/16 | 10-5/16 |
|             | (12.7)     | (395)   | (107)  | (262)   |
| TIWM015B21S | 1/2        | 18-7/8  | 5-9/16 | 18-9/16 |
|             | (12.7)     | (480)   | (141)  | (471)   |
| TIWM018B21S | 5/8        | 18-7/8  | 5-9/16 | 18-9/16 |
| TIWM024B21S | (15.88)    | (480)   | (141)  | (471)   |
| TIWM030B21S |            |         |        |         |

### Liquid Pipe

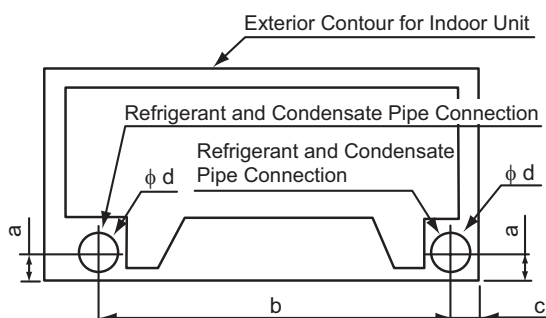


Unit: inch (mm)

| Model       | Liquid Piping |          |        |         |
|-------------|---------------|----------|--------|---------|
|             | Diameter      | d        | e      | h       |
| TIWM006B21S | 1/4           | 17-11/16 | 4-3/16 | 7-3/8   |
| TIWM008B21S | (6.35)        | (450)    | (107)  | (188)   |
| TIWM012B21S | 1/4           | 17-11/16 | 4-3/16 | 8-1/8   |
|             | (6.35)        | (450)    | (107)  | (207)   |
| TIWM015B21S | 1/4           | 21-1/4   | 5-9/16 | 16-7/16 |
|             | (6.35)        | (540)    | (141)  | (418)   |
| TIWM018B21S | 3/8           | 21-1/4   | 5-9/16 | 16-7/16 |
| TIWM024B21S | (9.52)        | (540)    | (141)  | (418)   |
| TIWM030B21S |               |          |        |         |

1. Do not twist the pipes when connecting them.
2. Use the proper bending equipment to bend piping as needed.  
If fashioning 1/4-inch diameter piping by hand, hold tightly at the bending radius and proceed with the bending operation.
3. In case of piping is connected toward rear side, please refer to installation manual.

For the pipe installation embedded in the wall, the positions for piping are as follows.



Unit: inch (mm)

| Model       | a     | b       | c      | φd     |
|-------------|-------|---------|--------|--------|
| TIWM006B21S | 1-3/4 | 25-1/8  | 4-3/16 | 2-9/16 |
| TIWM008B21S | (45)  | (638)   | (107)  | (65)   |
| TIWM012B21S | 1-3/4 | 25-7/8  | 4-3/16 | 2-9/16 |
|             | (45)  | (657)   | (107)  | (65)   |
| TIWM015B21S | 1-5/8 | 37-7/16 | 5-9/16 | 3-1/8  |
| TIWM018B21S | (42)  | (951)   | (141)  | (80)   |
| TIWM024B21S |       |         |        |        |
| TIWM030B21S |       |         |        |        |

Version 201810

